

4-1- 1/10/23



**b a** BURGIS ASSOCIATES, INC.  
 Commercial Real Estate  
 2500 Wood Avenue  
 White Plains, New York 10610  
 P: 914.668.1911  
 F: 914.668.1912

---

Project No:  
**246-264**  
**South Broad Street**

Write of Record and  
 Burgis County, New Jersey

---

**Legend**  
 Subject Site

---

No.	Date	Author	Title	Scale

Scale: 1" = 100'

Comparison Map: 1966 and 1970

Graphic Scale:  
 0 25 50 100 Feet

---

Prepared by: BURGIS  
 Project No.: 246-264  
 Date: 8/1/2023  
 Sheet: 004  
 Scale: 1" = 100'

Drawn by:  
 Date:  
 Scale:

Source 1: 1966 aerial imagery data from NJDEP  
 Source 2: 1970 aerial from HistoricAerial.com

©2023 Burgis Associates, Inc. All rights reserved.

Ex. A-3 1/10/23



Ev. A-4 1/10/23



**ULINE**

**SPILL CONTAINMENT DRUM SHED**

**H-6503**

EPA 40 CFR 264.175

SUMP CAP: 66 GAL.

LOAD CAP: 2,000 LBS.

1-800-295-5510  
uline.com



EV 1A-8 1/10/23



Ex A-9 1/10/23

Ex A-12





Ex. A-13



EX A-14



Ex. A-15



Ex. A-116



Bx A-20 1/10/23



Ex A-18 1/10/23

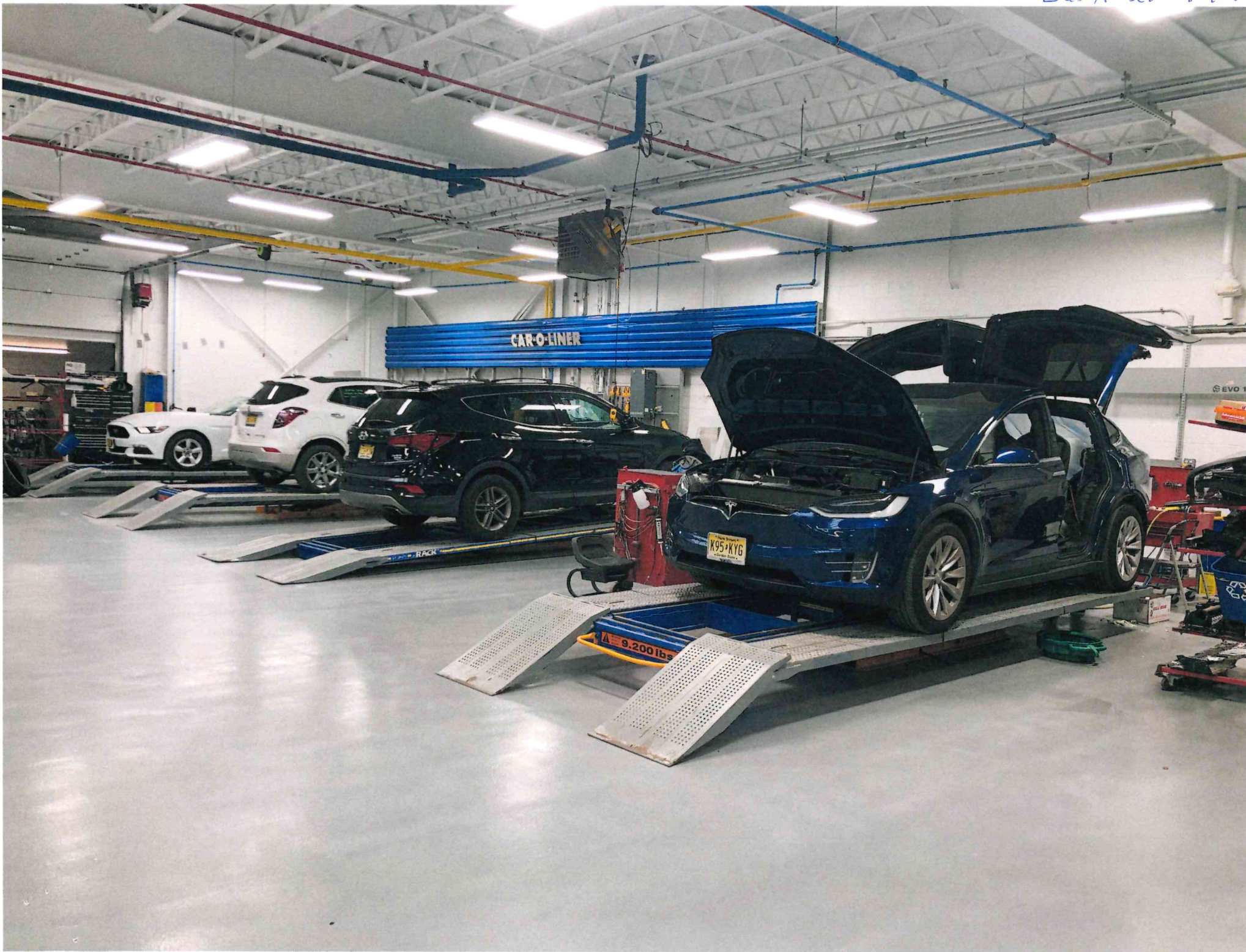


13x A-19 11/10/23



~ A-20

Car-O-Liner

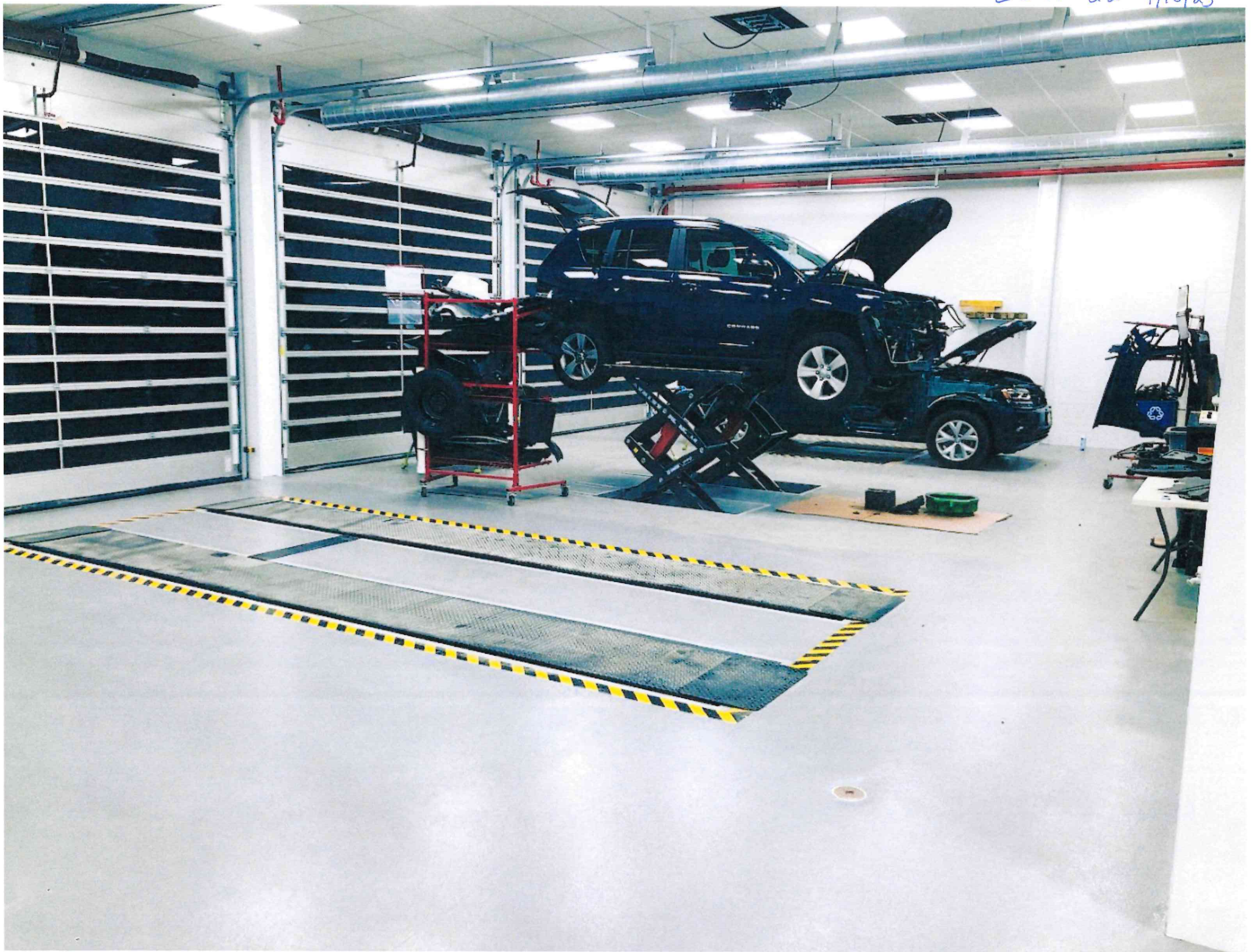


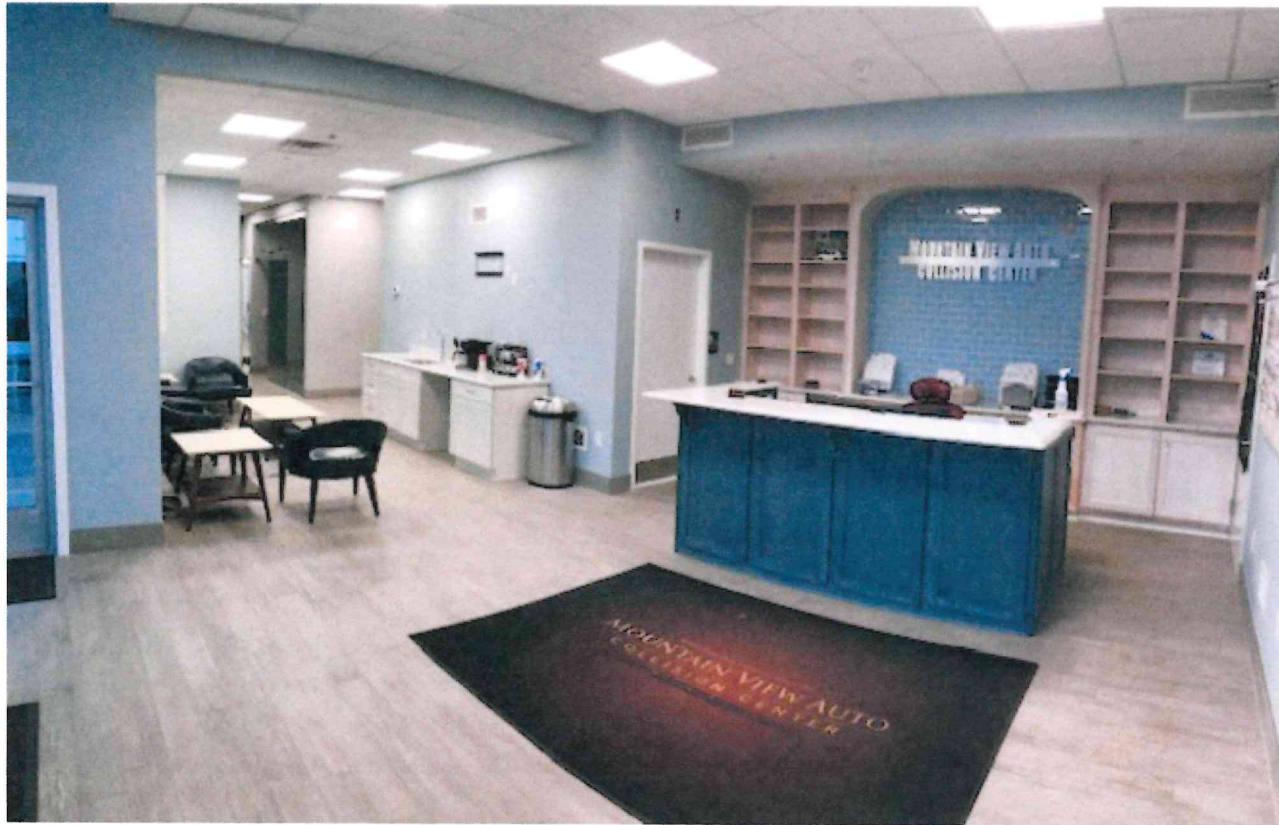
CAR-O-LINER

9,200 lbs

EVO 1

Ex 11 ad 1/10/23





Ex. 17-24 1/10/20



RO: 23983  
PL 88AW  
MODEL Tucson  
www.rockauto.com

RO: 23983  
MODEL Tucson

RO: 23983  
MODEL Tucson





Ex A-26  
1/10/23



In Case of Fire  
Elevators Are Out Of Service  
Use Exit Signs