

□ S.M. COPPA, AIA
NJ-RA: AI-08323
■ M.B. MONTALBANO, AIA
NJ-RA: AI-15992

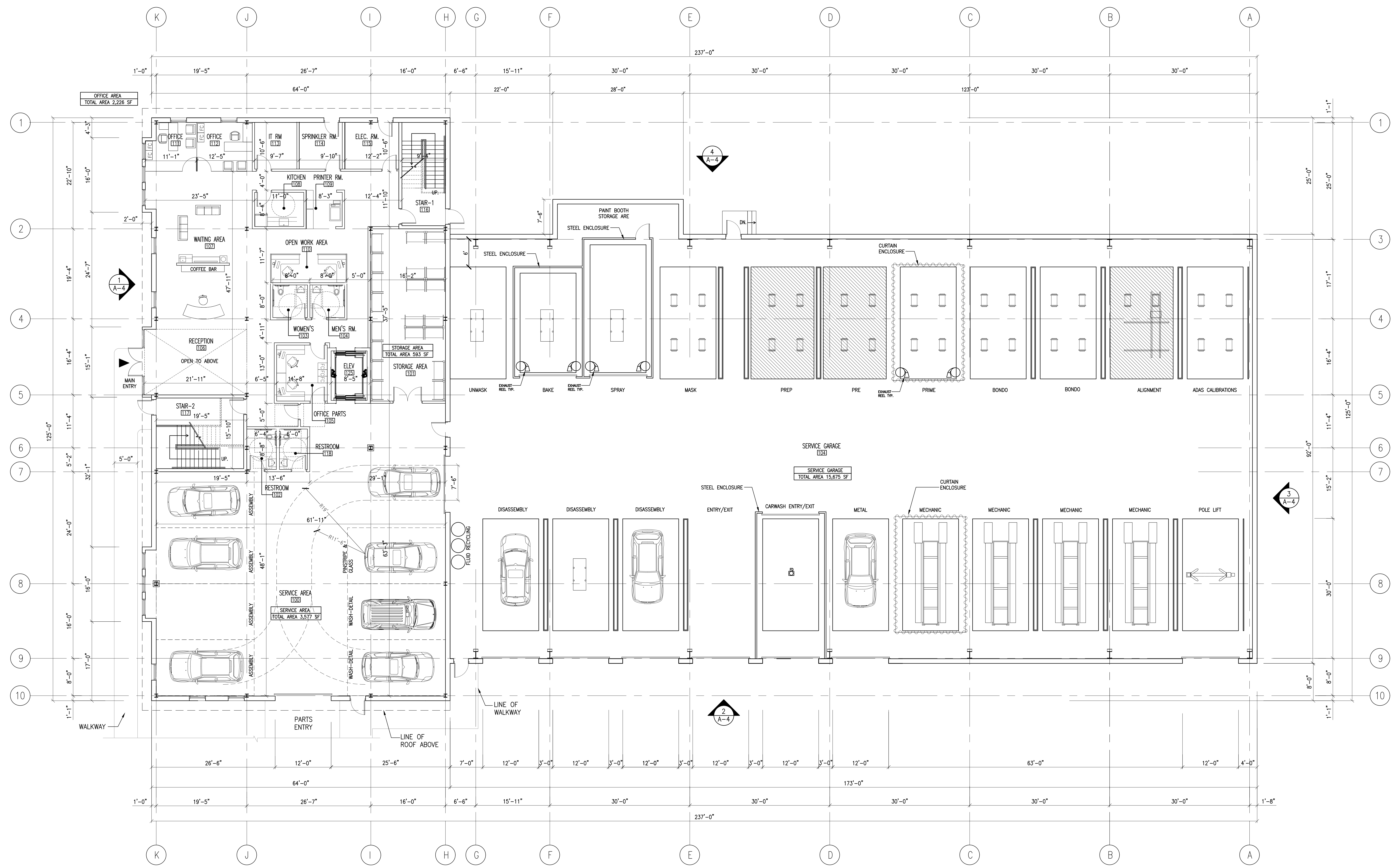
246 - 264 S. BROAD ST.
RIDGEWOOD, NJ 07450
BLOCK: 3905 LOT: 12,13 & 14

**PROPOSED DEVELOPMENT FOR
246 - 264 S. BROAD ST.**

| | | |
|----------|------------------------|----------|
| 2 | GARAGE EXIT RELOCATION | 05/11/23 |
| 3 | BOA REVISIONS | 02/27/23 |
| REVISION | DATE | |

FIRST FLOOR PLAN

| | |
|-------------|------------|
| AS NOTED | |
| SCALE | |
| MA | A-1 |
| BRN | |
| MM | |
| CHECKED | |
| PROJECT NO. | 21130 |
| DATE | 2022-08-24 |



1 FIRST FLOOR PLAN
1/8" = 1'-0"

© Coppo, AIA, 2023. All rights reserved. Architect: S.M. COPPA, AIA. Project: 2021.01.130 - Mountbano Auto 242-264 S. Broad St. Ridge Wood, NJ. 07450. This drawing is the property of Coppo, AIA. No part of this drawing may be reproduced without the written consent of Coppo, AIA.

□ S.M. COPPA, AIA
NJ-RA: AI-08323
■ M.B. MONTALBANO, AIA
NJ-RA: AI-15992

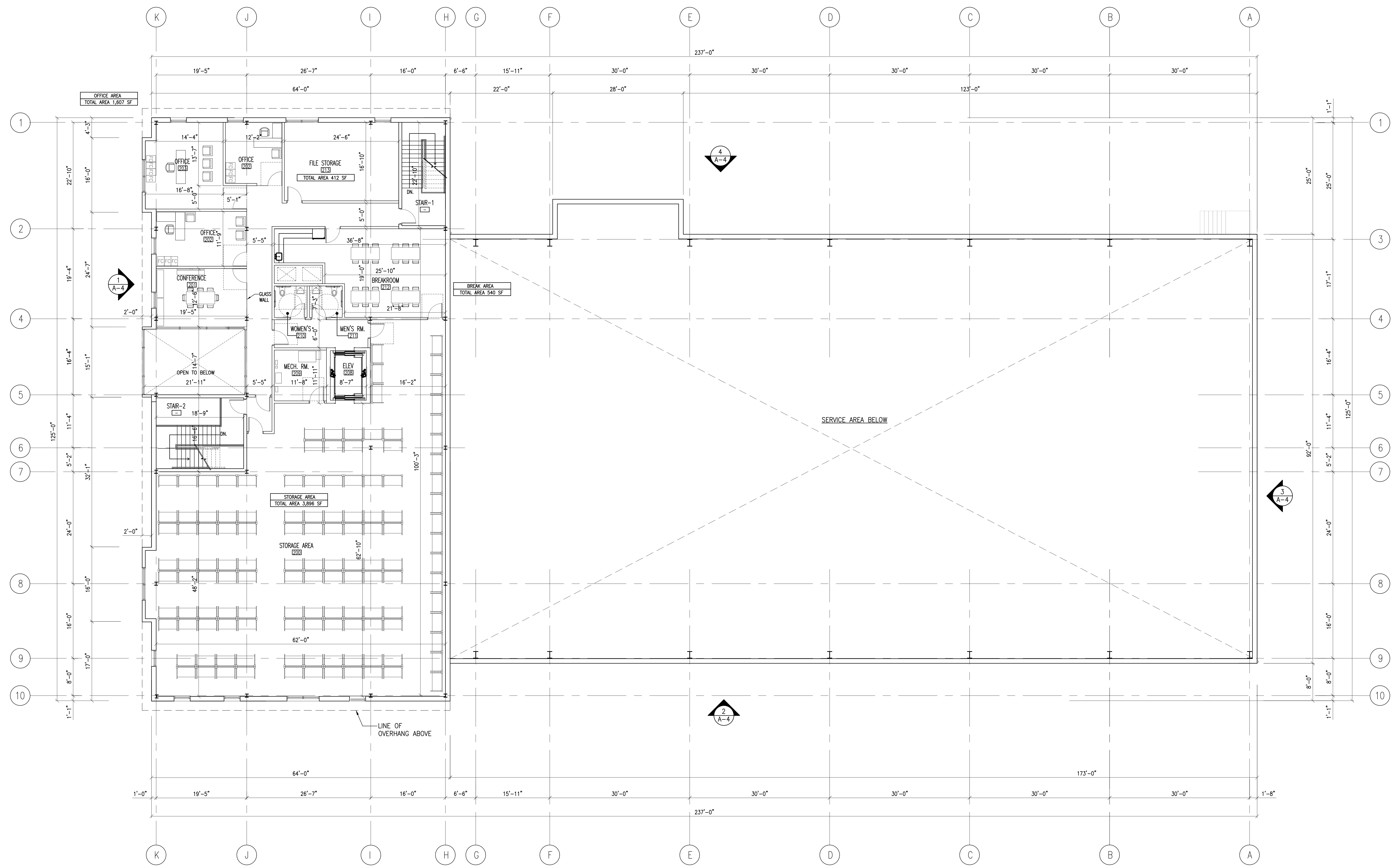
246 - 264 S. BROAD ST.
RIDGEWOOD, NJ 07450
BLOCK: 3905 LOT: 12, 13 & 14

**PROPOSED DEVELOPMENT FOR
246 - 264 S. BROAD ST.**

| REVISION | DATE |
|---------------------------|----------|
| 2/ GARAGE EXIT RELOCATION | 05/11/23 |
| 7/ BOA REVISIONS | 02/27/23 |

SECOND FLOOR PLAN

| | |
|-------------|------------|
| AS NOTED | |
| SCALE | |
| MA | A-2 |
| BRN | |
| MM | |
| CHECKED | |
| 21130 | 2022-08-24 |
| PROJECT NO. | DATE |



1 SECOND FLOOR PLAN
1/8" = 1'-0"

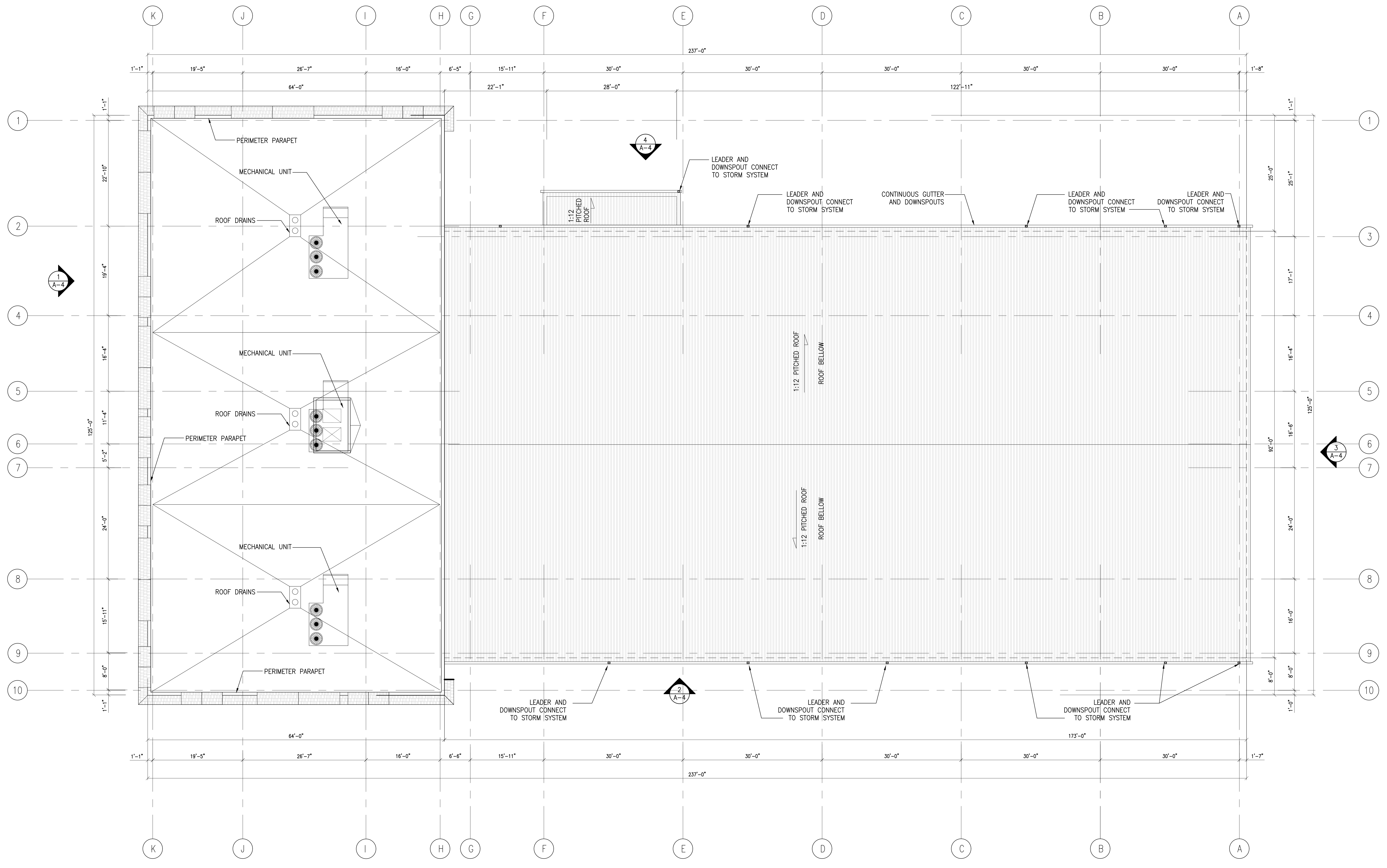
© Coppo Montalbano Architects, P.C. 2022-08-24. All rights reserved. This drawing is the property of Coppo Montalbano Architects, P.C. and is not to be used, copied, or reproduced in any form without the written consent of Coppo Montalbano Architects, P.C.

**PROPOSED DEVELOPMENT FOR
246 - 264 S. BROAD ST.**

| REVISION | DATE |
|---------------------------|----------|
| 2/ GARAGE EXIT RELOCATION | 05/11/23 |
| 1/ BOA REVISIONS | 02/27/23 |

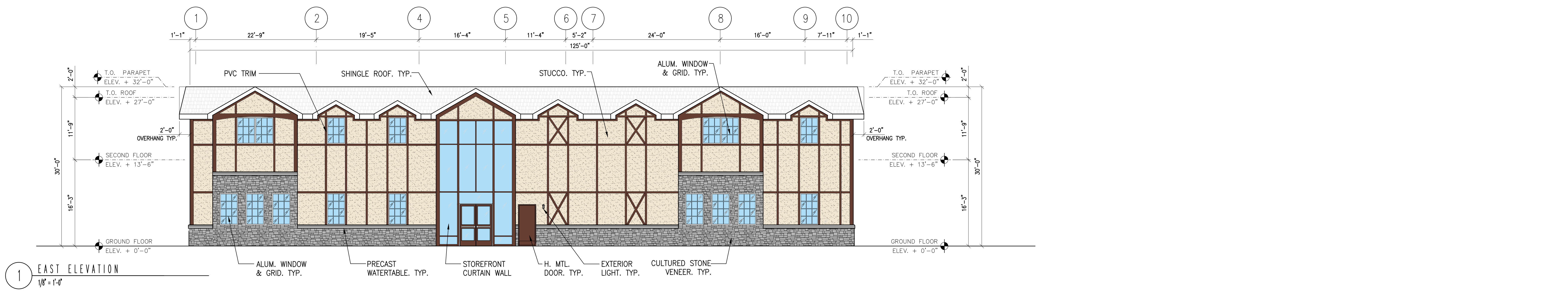
ROOF PLAN

| | |
|-------------|------------|
| AS NOTED | |
| SCALE | |
| MA | A-3 |
| BRN | |
| MM | |
| CHECKED | |
| 21130 | 2023/09/24 |
| PROJECT NO. | DATE |

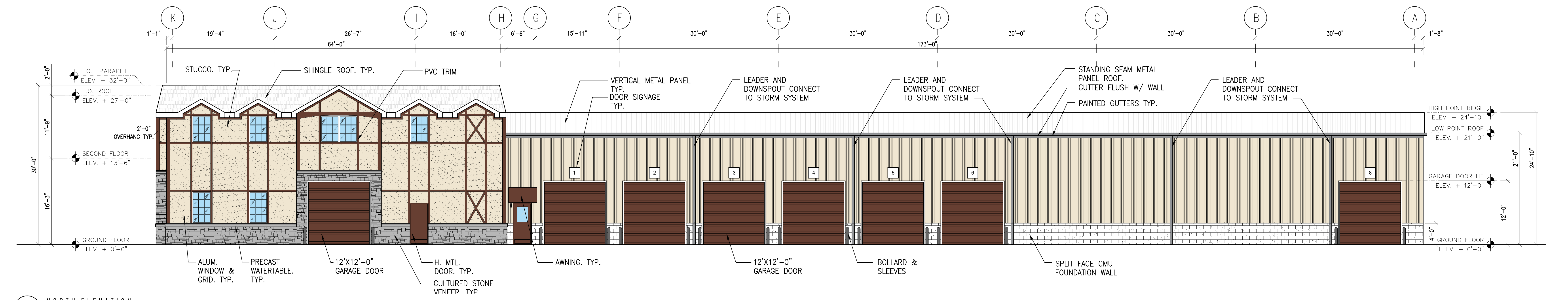


1 ROOF PLAN
1/8" = 1'-0"

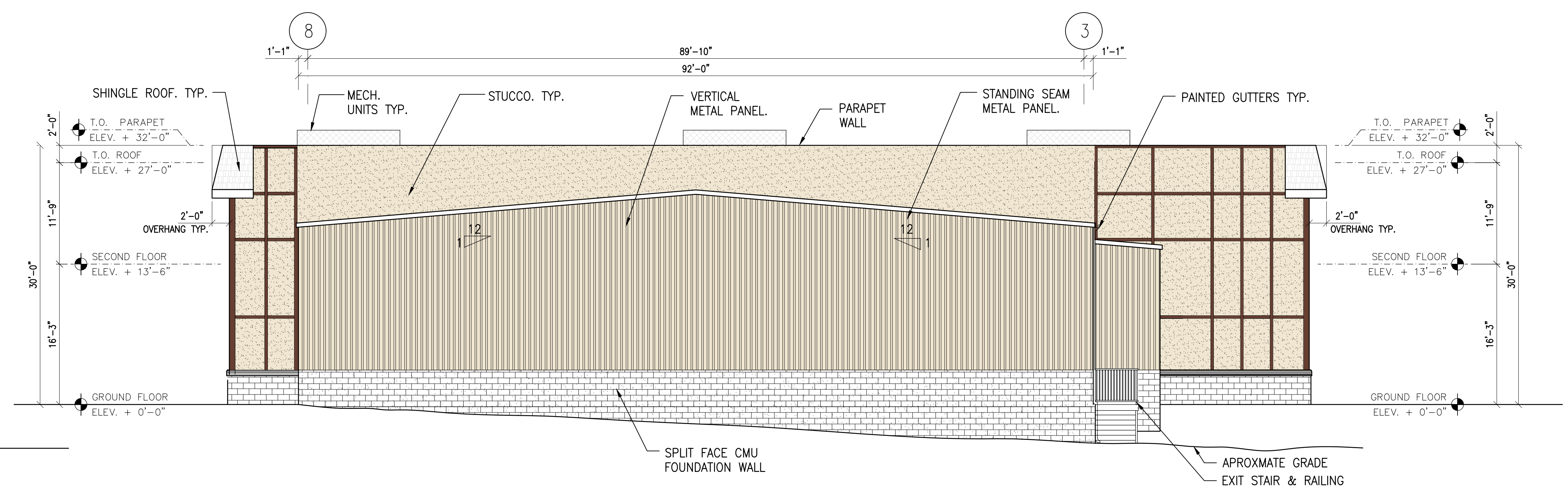
© Coppo Montalbano Architects, Inc. All rights reserved. This drawing is the property of Coppo Montalbano Architects, Inc. and is not to be used, copied, or reproduced in any form without the written consent of the firm. P:\01 Projects\2021\21130 - Montalbano Auto 242-264 S. Broad St. - Ridgewood NJ\100 Con. Docs & Specs\PLAN-21130-3.dwg
 2023/09/24 10:45 AM



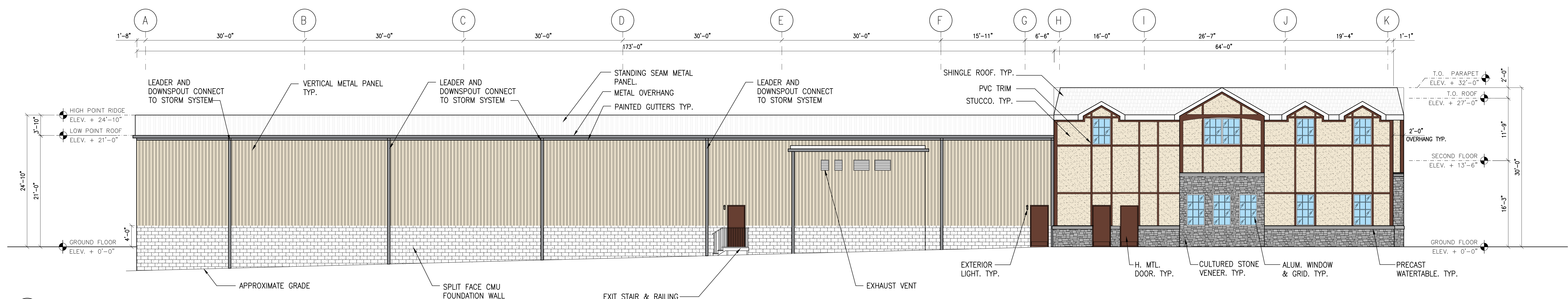
1 EAST ELEVATION
1/8" = 1'-0"



2 NORTH ELEVATION
1/8" = 1'-0"



3 WEST ELEVATION
1/8" = 1'-0"



4 SOUTH ELEVATION
1/8" = 1'-0"

| REVISION | DATE |
|--------------------------|----------|
| 2 GARAGE EXIT RELOCATION | 05/11/23 |
| BOA REVISIONS | 02/27/23 |

ELEVATIONS

| | |
|-------------|------------|
| AS NOTED | |
| SCALE | A-4 |
| MA | |
| SM | |
| MM | |
| CHECKED | |
| PROJECT NO. | 21130 |
| DATE | 2022-08-24 |

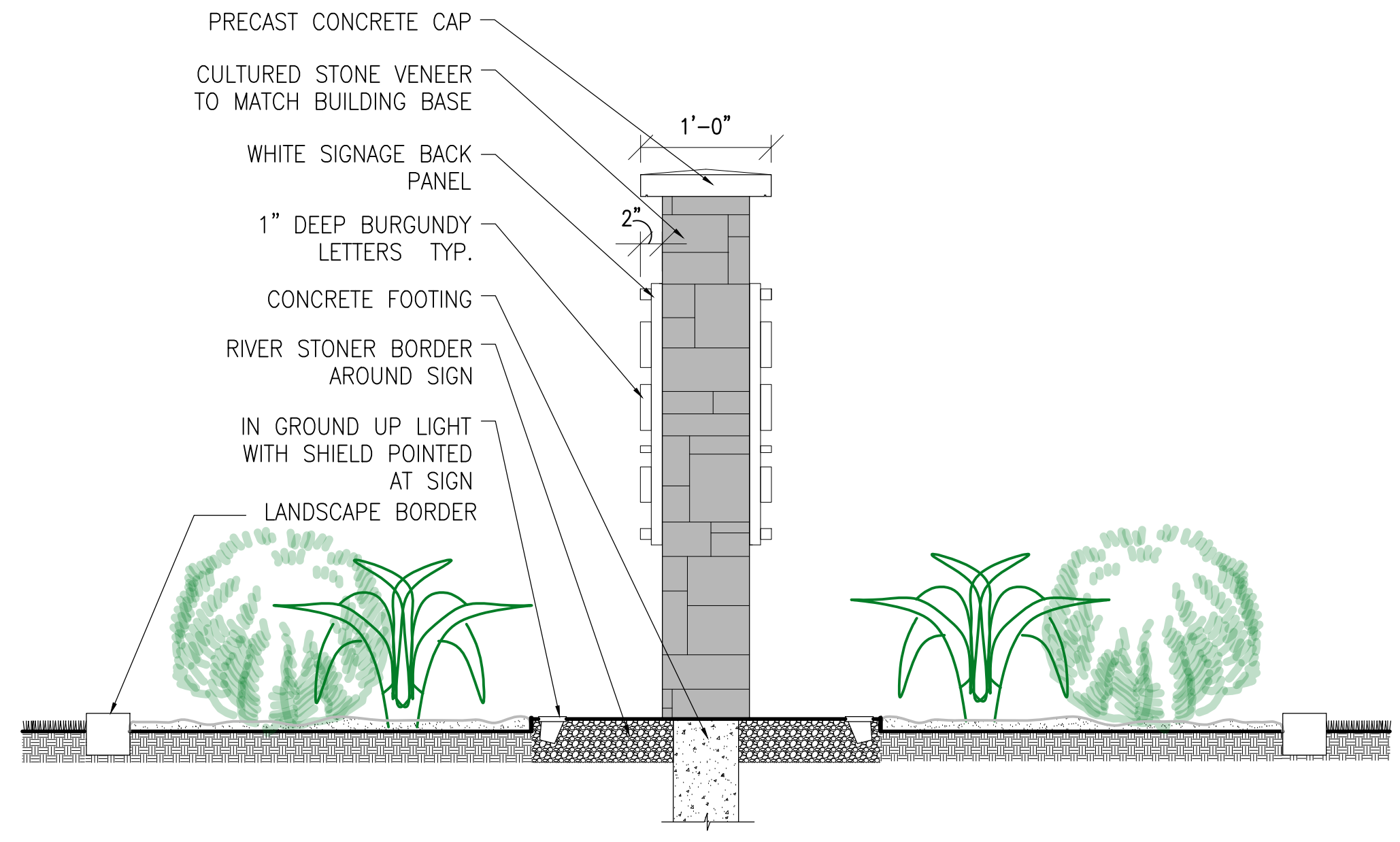
© Coppo Montalbano Architects, LLC
 P:\01 Projects\2021\21130 - Montalbano Auto 246-264 S. Broad St. - Ridgewood NJ\400 Con. Docs & Specs\PLAN-21130-3.dwg
 This document is the property of Coppo Montalbano Architects, LLC. It is to be used only for the project and site identified herein. It is not to be reproduced, stored in a retrieval system, or transmitted in any form or by any means, electronic, mechanical, photocopying, recording, or by any information storage and retrieval system, without the prior written permission of Coppo Montalbano Architects, LLC.



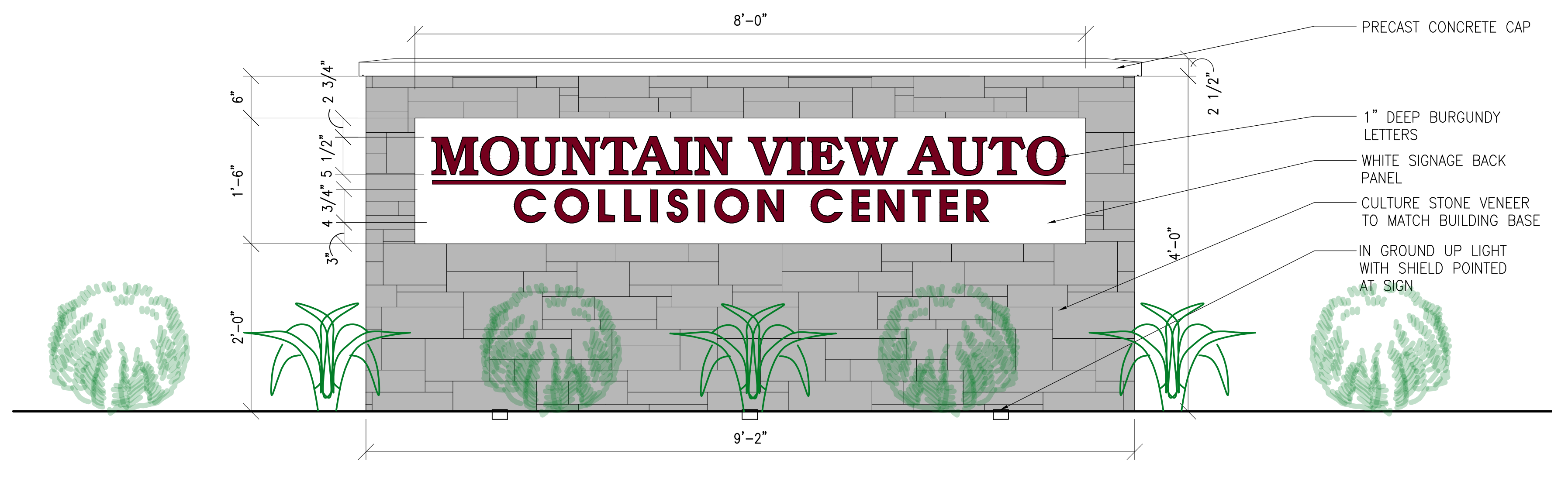
□ S.M. COPPA, AIA
NJ-RA: AI-08323
■ M.B. MONTALBANO, AIA
NJ-RA: AI-15992

246 - 264 S. BROAD ST.
RIDGEWOOD, NJ 07450
BLOCK: 3905 LOT: 12,13 & 14

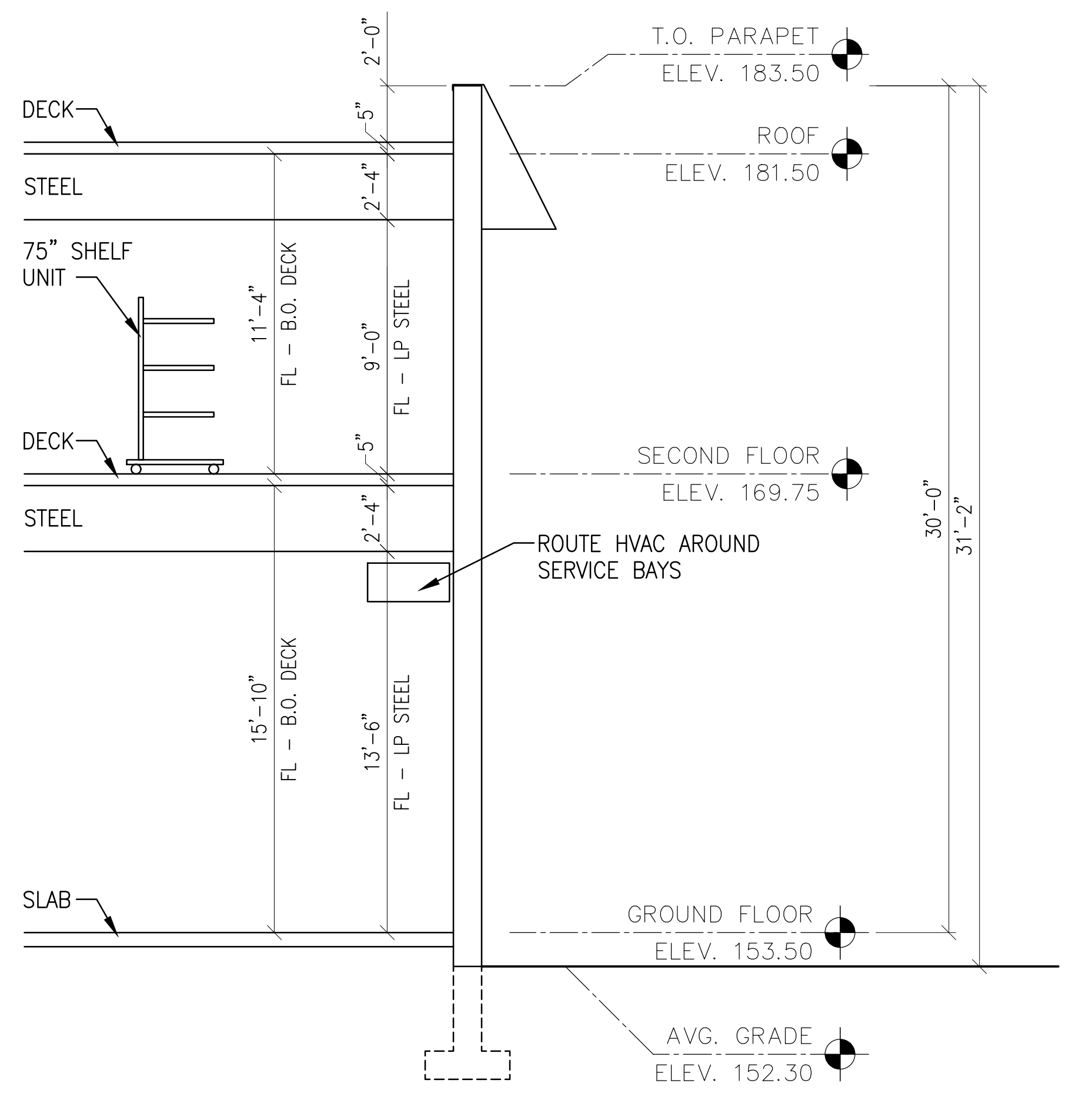
PROPOSED DEVELOPMENT FOR
246 - 264 S. BROAD ST.



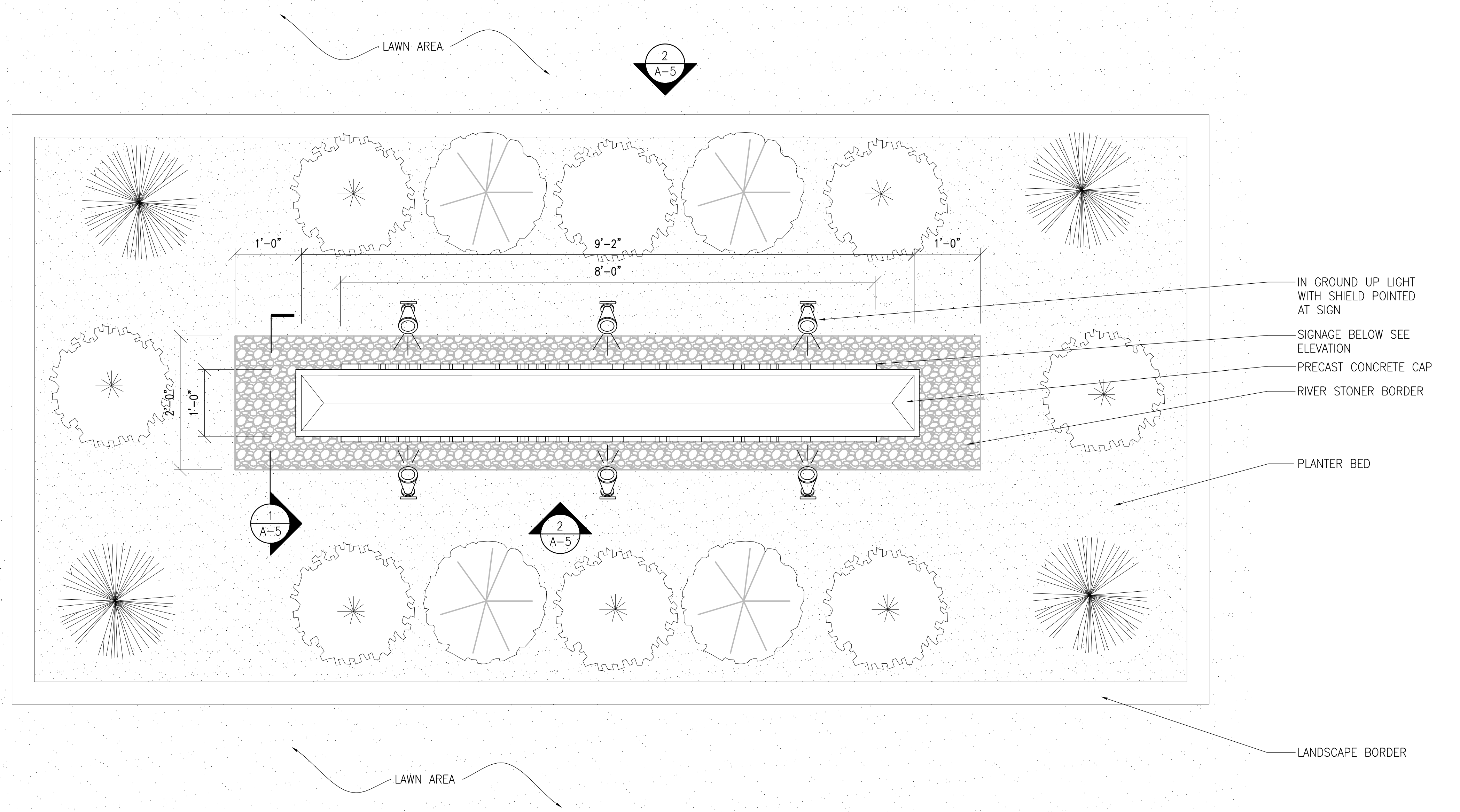
1 MONUMENT SIGNAGE (S-1) SIDE ELEVATION
1" = 1'-0"



2 MONUMENT SIGNAGE (S-1) FRONT ELEVATION
1" = 1'-0"



4 DIAGRAMMATIC BUILDING SECTION
1/4" = 1'-0"



3 MONUMENT SIGNAGE (S-1) TOP VIEW
1" = 1'-0"



HEIGHT: 75"
WIDTH: 51"
DEPTH: 31"

5 TYPICAL SHELVING UNIT IMAGE
N.T.S.

SIGN SCHEDULE:

| DESIGNATION | PROPOSED | ILLUMINATION | OVERALL SIZE |
|-------------|-----------------------------------|--|-----------------------------------|
| (S-1) | MONUMENT/ FREESTANDING SIGN | ILLUMINATED/ INDIRECTLY LIGHTED SIGN | 12 S.F. PER SIDE 12X2 =24 S.F. |

NOTE:
PROPOSED SIGN LOCATION AND AREA PER ZONE C COMMERCIAL DISTRICT.

| REVISION | DATE |
|--------------------------|----------|
| 2 GARAGE EXIT RELOCATION | 05/11/23 |
| BOA REVISIONS | 02/27/23 |

SIGNAGE ELEVATION AND NOTES

| | |
|-------------------|-----------------|
| AS NOTED | A-5 |
| SCALE | |
| MA DRAWN | |
| MM CHECKED | |
| 21130 PROJECT NO. | 2022-08-24 DATE |

© Coppo Montalbano Architects, Inc. 2022. All rights reserved. Project: 2021.01.130 - Mountainview Auto 246-264 S. Broad St., Ridgewood, NJ 07450. This drawing is a conceptual rendering and does not constitute an offer of any financial product or service. For more information, please contact Coppo Montalbano Architects, Inc. at 973.890.8989.