

□ S.M. COPPA, AIA
NJ-RA: AI-08323
■ M.B. MONTALBANO, AIA
NJ-RA: AI-15992

246 - 264 S. BROAD ST.
RIDGEWOOD, NJ 07450
BLOCK: 3905 LOT: 12,13 & 14

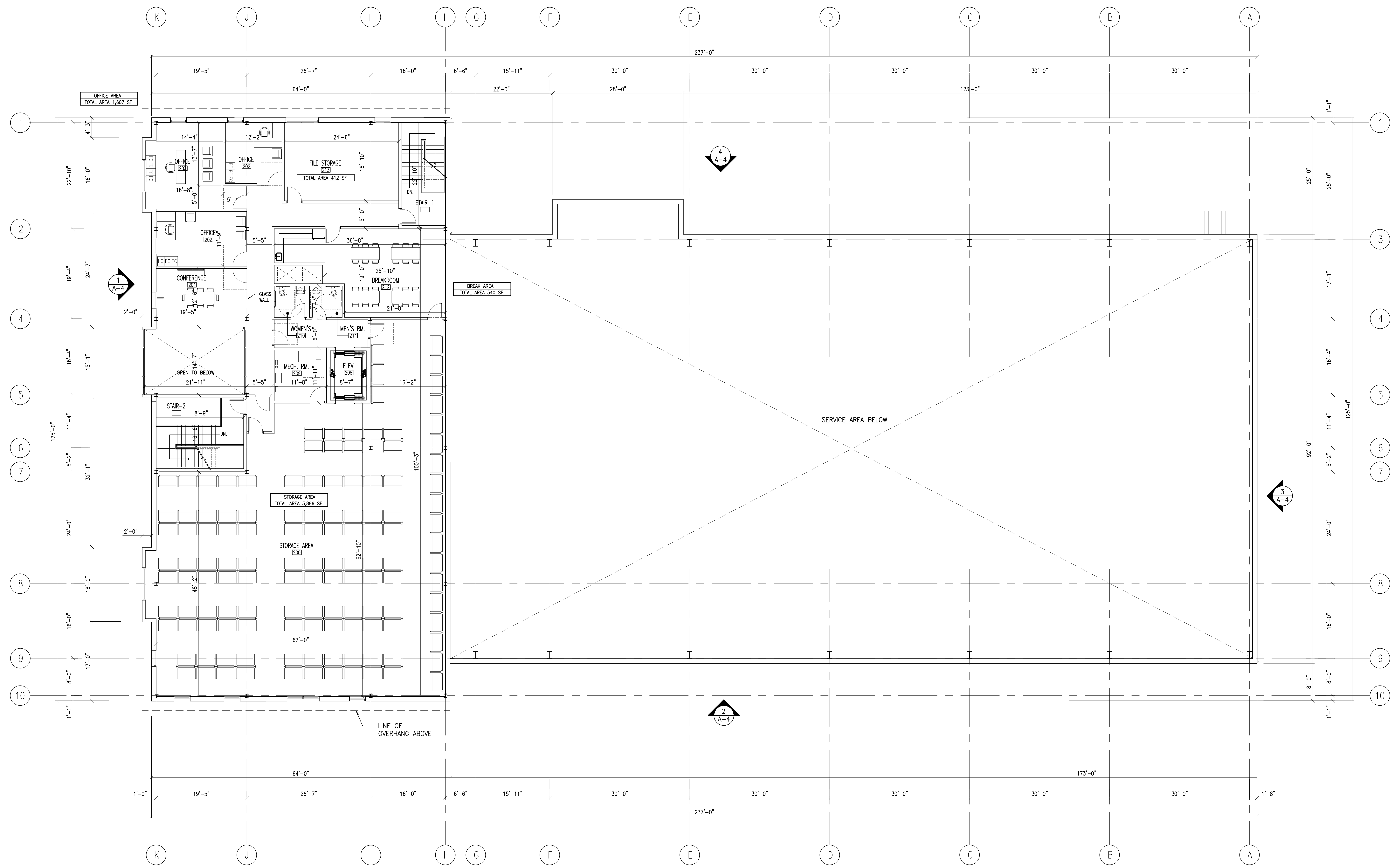
PROPOSED DEVELOPMENT FOR
246 - 264 S. BROAD ST.

BOA REVISIONS 02/27/23
REVISION DATE

SECOND FLOOR PLAN

AS NOTED
SCALE
MA
DRAWN
MM
CHECKED
21130
PROJECT NO. DATE
2022-08-24

A-2



1 SECOND FLOOR PLAN
1/8" = 1'-0"

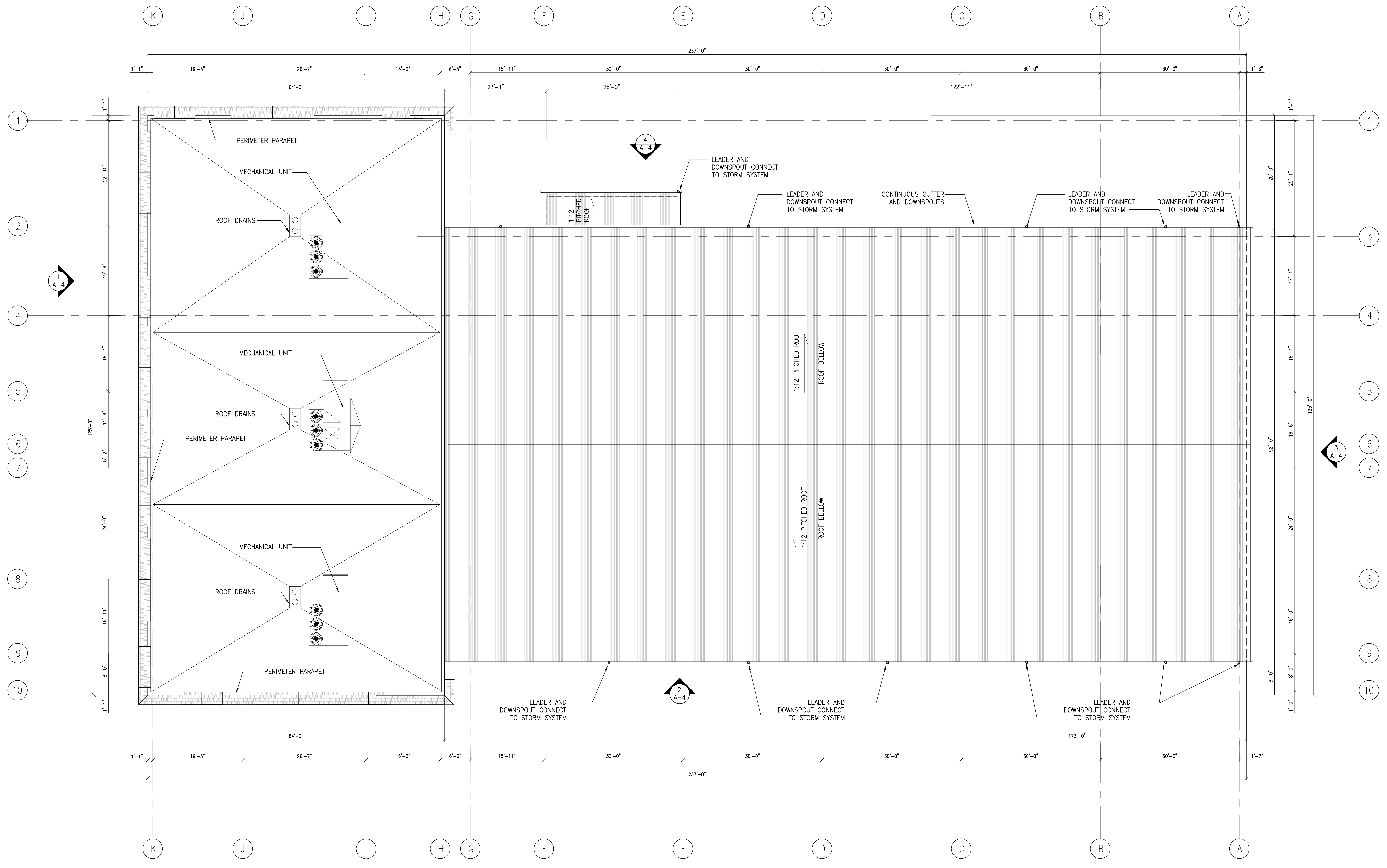
© Coppo Montalbano Architects, P.C. 2022. All rights reserved. This drawing is the property of Coppo Montalbano Architects, P.C. and is not to be reproduced, stored in a retrieval system, or transmitted in any form or by any means, electronic, mechanical, photocopying, recording, or by any information storage and retrieval system, without the prior written permission of Coppo Montalbano Architects, P.C.

PROPOSED DEVELOPMENT FOR
246 - 264 S. BROAD ST.

REVISION	DATE
BOA REVISIONS	02/27/23

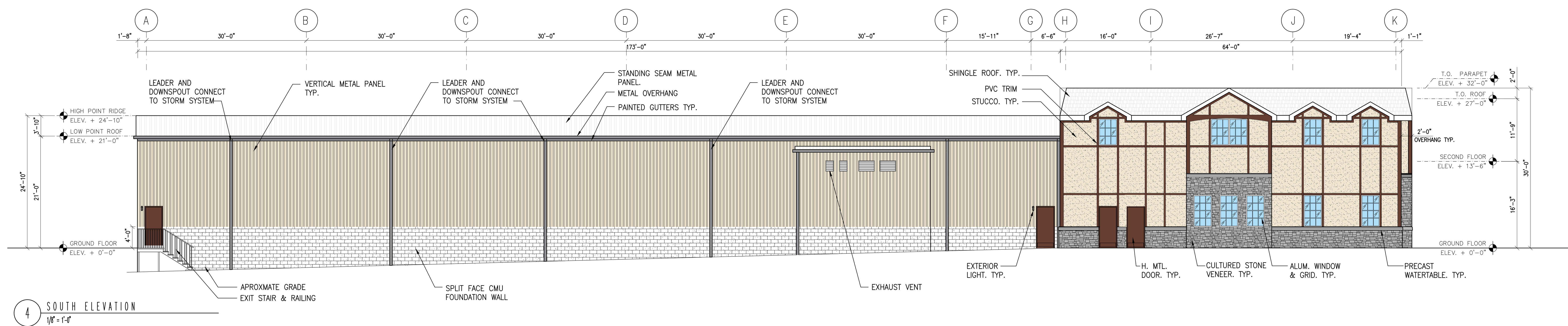
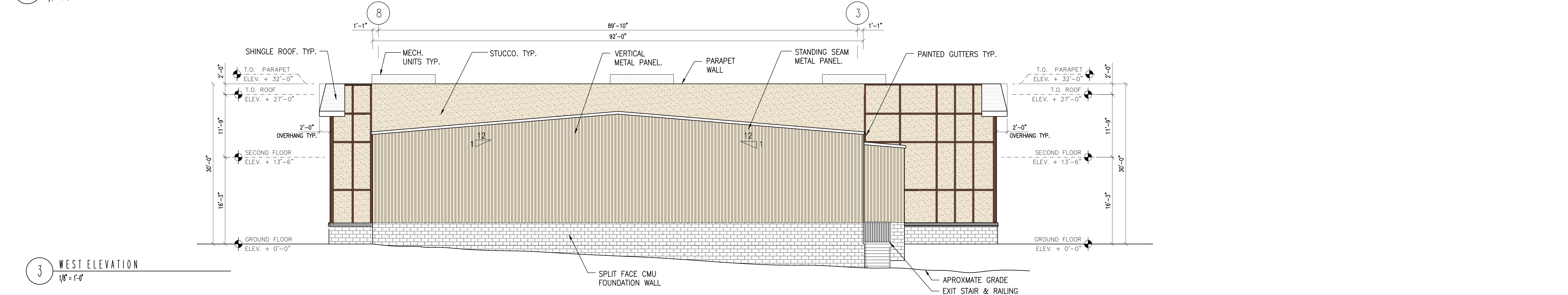
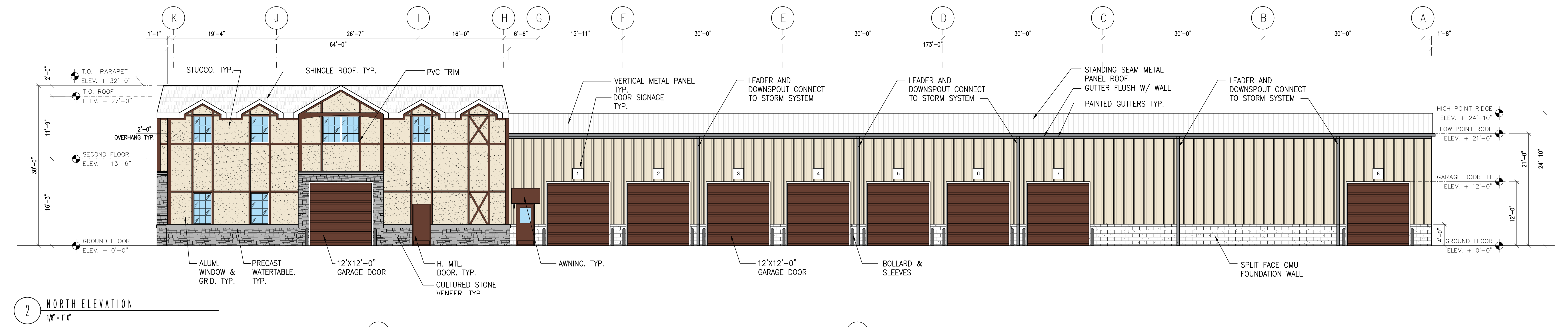
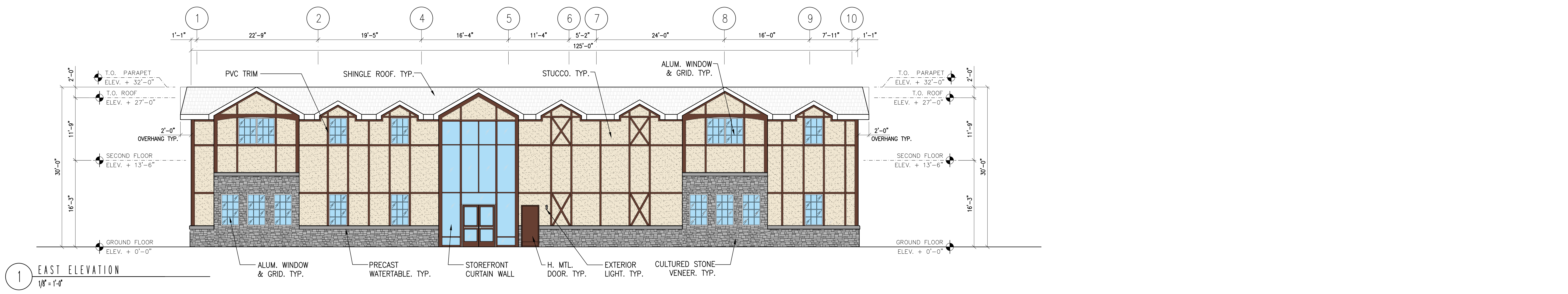
ROOF PLAN

AS NOTED	
SCALE	A-3
MA	
DRWING	
MM	
CHECKED	
PROJECT NO.	21130
DATE	2022-08-24



1 ROOF PLAN
 1/8" = 1'-0"

© Coppo Montalbano Architects, Inc. All rights reserved. This drawing is the property of Coppo Montalbano Architects, Inc. and is not to be reproduced, stored in a retrieval system, or transmitted in any form or by any means, electronic, mechanical, photocopying, recording, or by any information storage and retrieval system, without the prior written permission of Coppo Montalbano Architects, Inc.



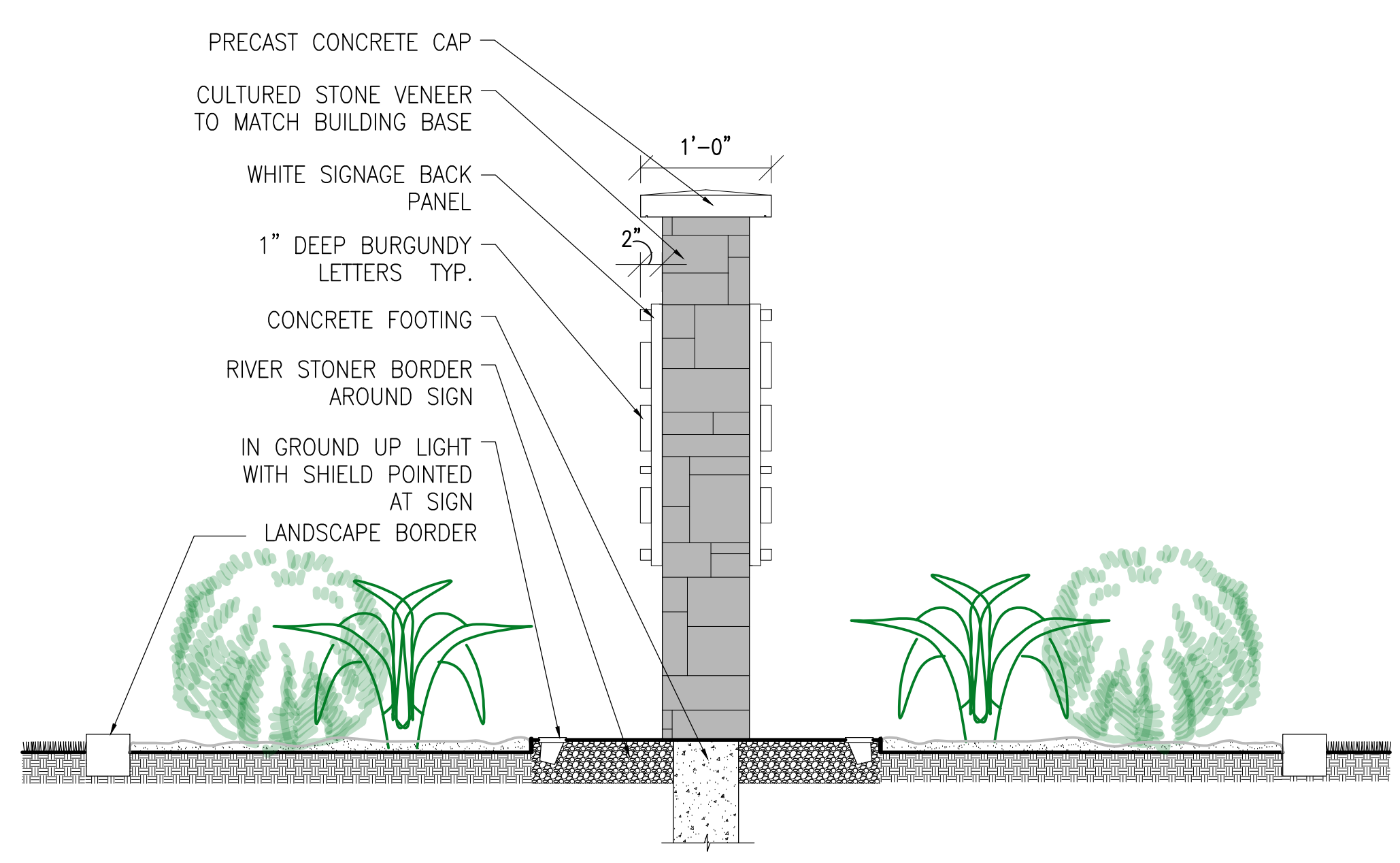
© Coppo Montalbano Architects, Inc. All rights reserved. No part of this drawing may be reproduced without the written consent of Coppo Montalbano Architects, Inc. This drawing is intended for the project identified in the title block. The drawings are not to be used for any other project without the written consent of Coppo Montalbano Architects, Inc.



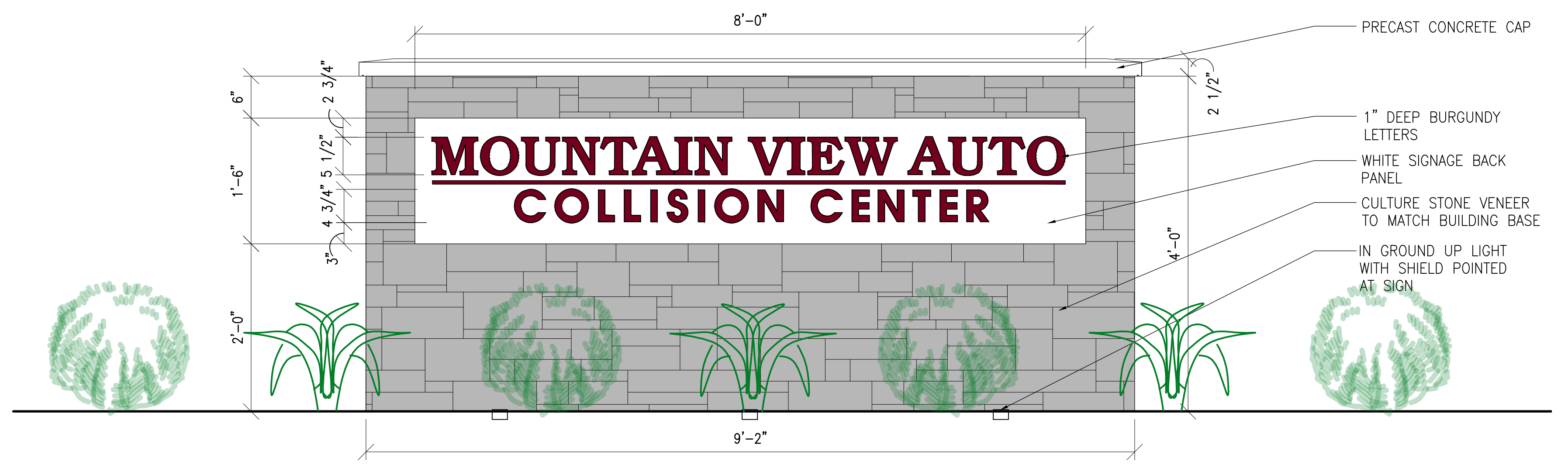
□ S.M. COPPA, AIA
NJ-RA: AI-08323
■ M.B. MONTALBANO, AIA
NJ-RA: AI-15992

246 - 264 S. BROAD ST.
RIDGEWOOD, NJ 07450
BLOCK: 3905 LOT: 12,13 & 14

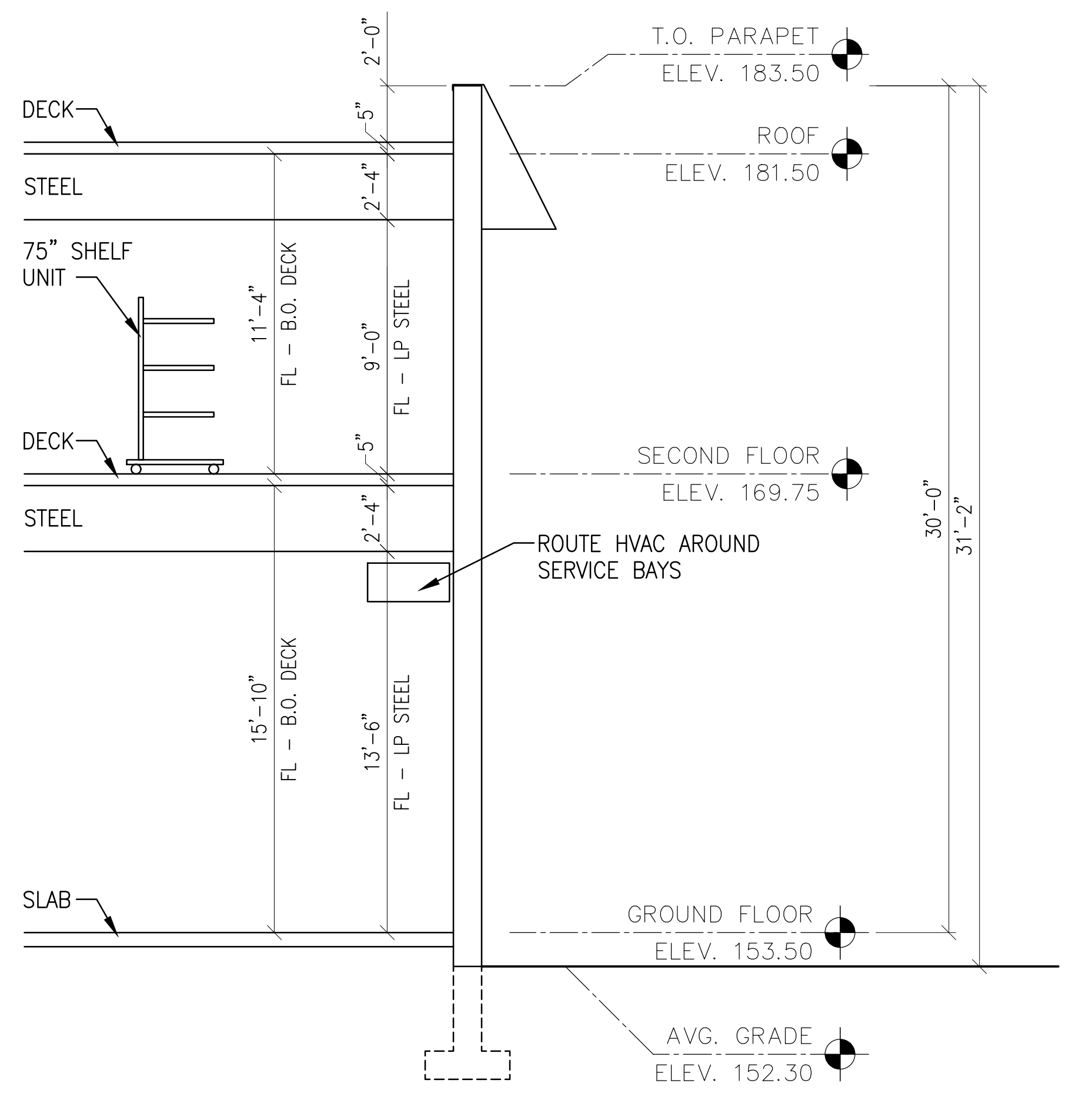
PROPOSED DEVELOPMENT FOR
246 - 264 S. BROAD ST.



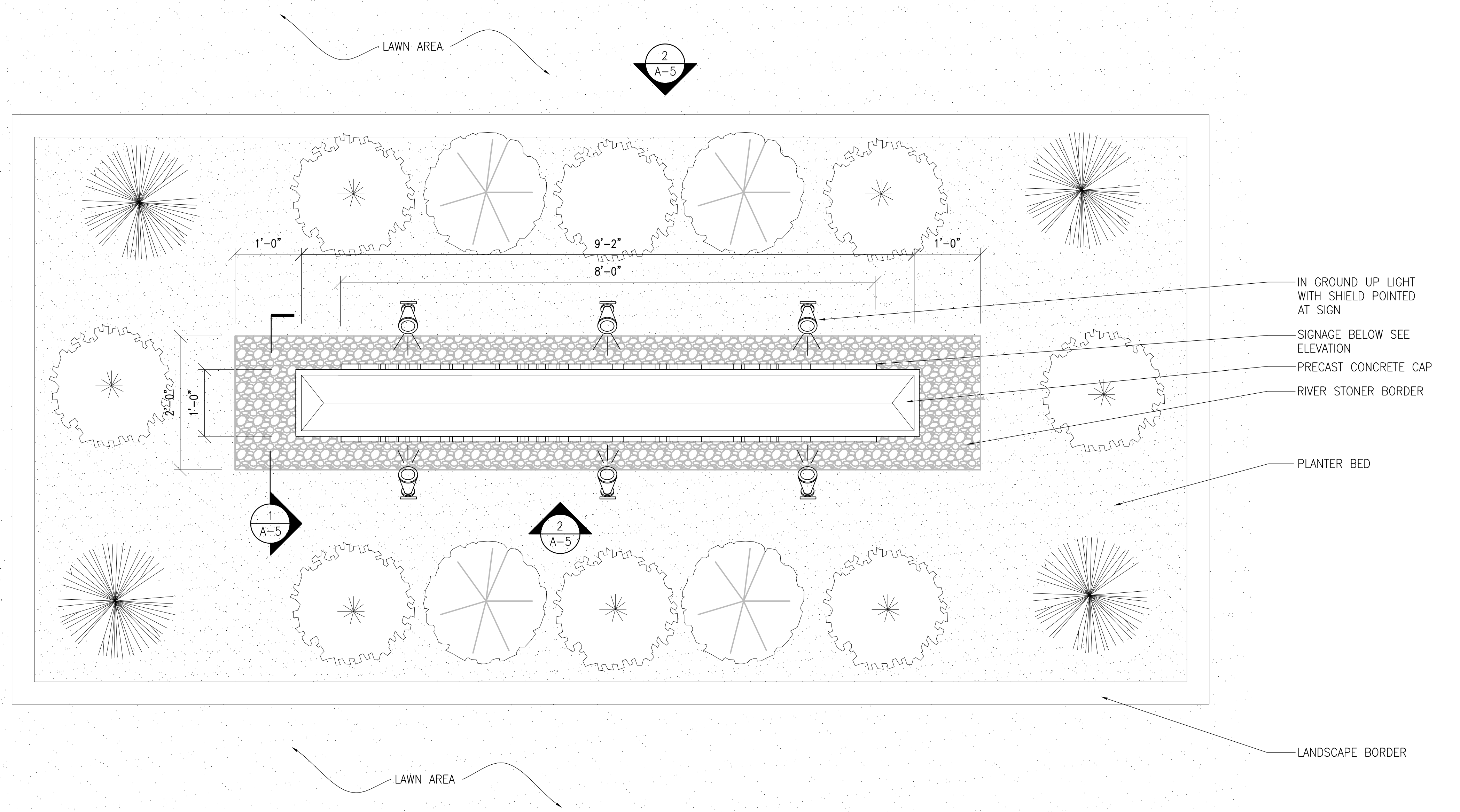
1 MONUMENT SIGNAGE (S-1) SIDE ELEVATION
1" = 1'-0"



2 MONUMENT SIGNAGE (S-1) FRONT ELEVATION
1" = 1'-0"



4 DIAGRAMMATIC BUILDING SECTION
1/4" = 1'-0"



3 MONUMENT SIGNAGE (S-1) TOP VIEW
1" = 1'-0"



HEIGHT: 75"
WIDTH: 51"
DEPTH: 31"

5 TYPICAL SHELVING UNIT IMAGE
N.T.S.

SIGN SCHEDULE:

DESIGNATION	PROPOSED	ILLUMINATION	OVERALL SIZE
(S-1)	MONUMENT/ FREESTANDING SIGN	ILLUMINATED/ INDIRECTLY LIGHTED SIGN	12 S.F. PER SIDE 12X2 = 24 S.F.

NOTE:
PROPOSED SIGN LOCATION AND AREA PER ZONE C COMMERCIAL DISTRICT.

BOA REVISIONS 02/27/23
REVISION DATE

SIGNAGE
ELEVATION AND
NOTES

AS NOTED
SCALE
MA
DRAWN
MM
CHECKED
21130
PROJECT NO. DATE
2022-08-24

A-5

© Coppo Montalbano Architects, Inc. All rights reserved. 2022-08-24. RidgeWood Auto 246-264 S. Broad St. RidgeWood NJ 07450. Project No. 21130. MA: 02/27/23. MM: 02/27/23. This drawing is the property of Coppo Montalbano Architects, Inc. and is not to be reproduced, stored in a retrieval system, or transmitted in any form or by any means, electronic, mechanical, photocopying, recording, or by any information storage and retrieval system, without the prior written permission of Coppo Montalbano Architects, Inc.