



427 PONFIELD PLACE



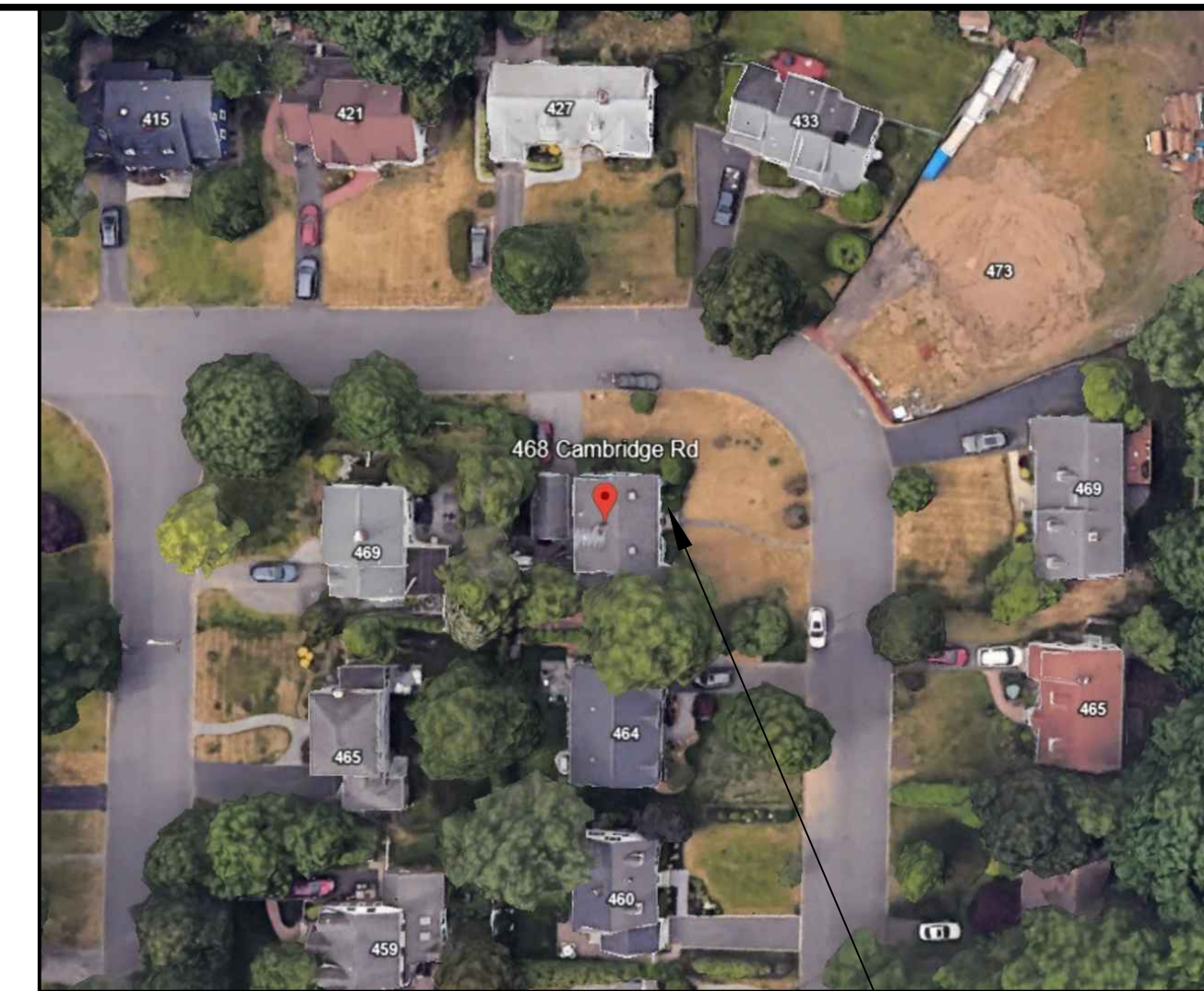
433 PONFIELD PLACE



473 CAMBRIDGE ROAD



469 CAMBRIDGE ROAD

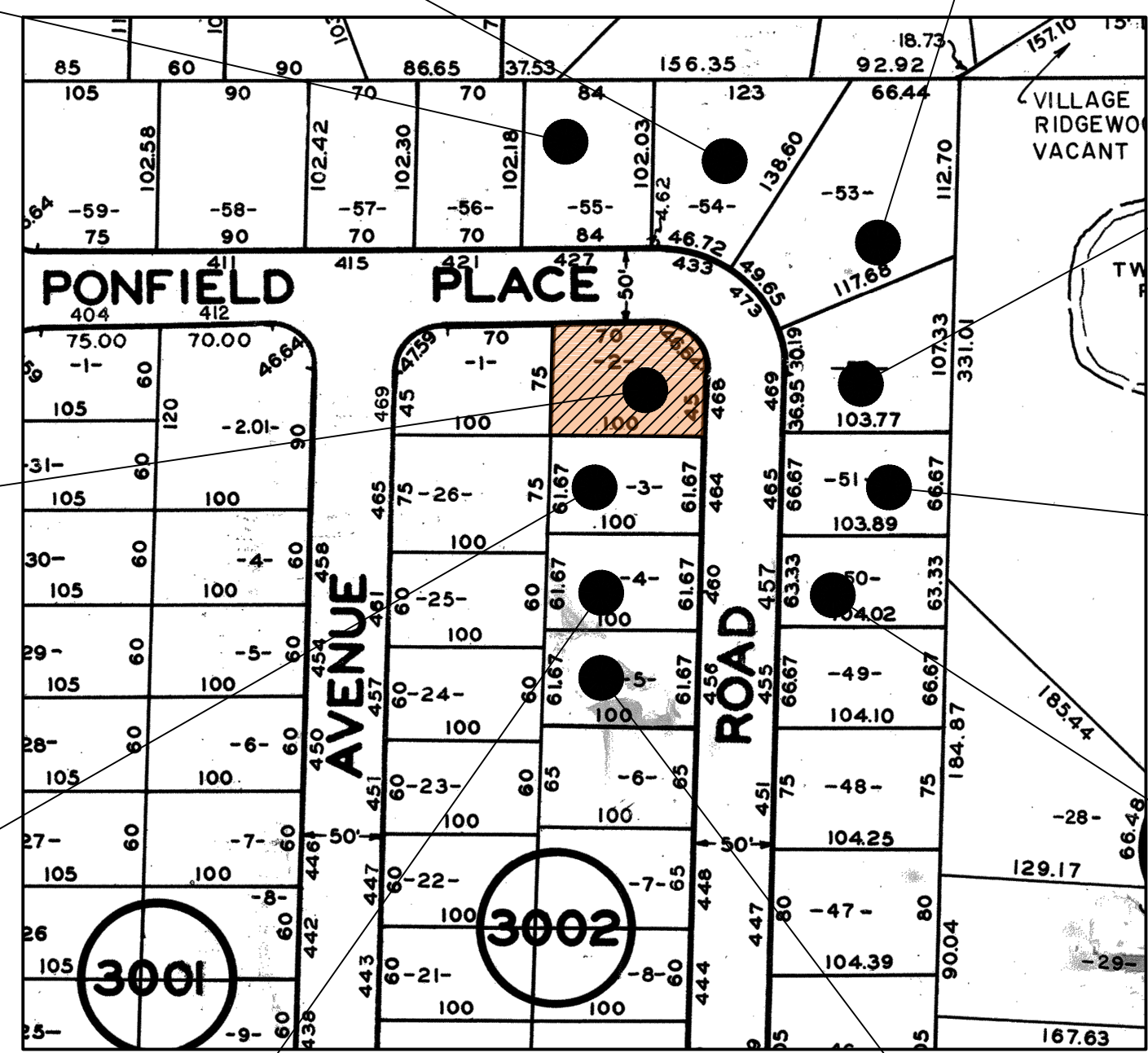


**AERIAL VIEW**  
SCALE : N.T.S.

PROPERTY IN QUESTION



468 CAMBRIDGE ROAD  
PROPERTY IN QUESTION



**TAX MAP**  
SCALE : N.T.S.



465 CAMBRIDGE ROAD



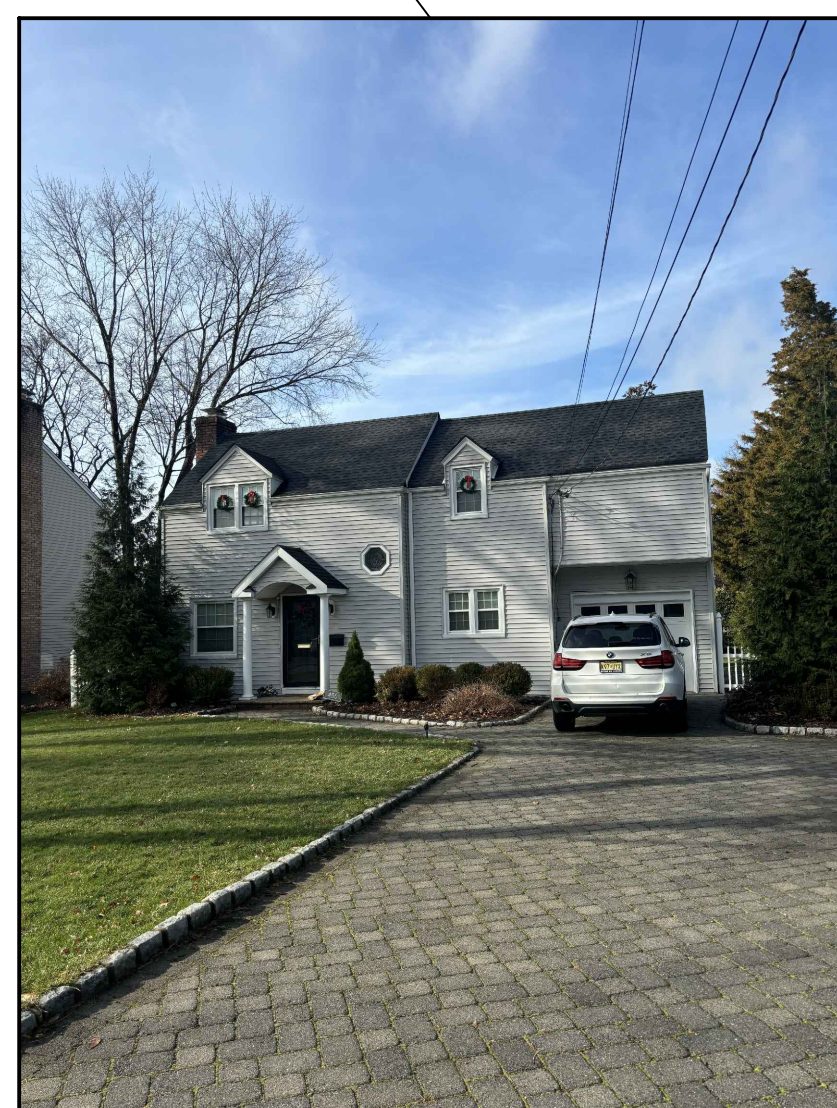
447 CAMBRIDGE ROAD:  
WITH FRONT PORCH



464 CAMBRIDGE ROAD



460 CAMBRIDGE ROAD



456 CAMBRIDGE ROAD



461 CAMBRIDGE ROAD



423 CAMBRIDGE ROAD:  
WITH FRONT PORCH

REVISIONS	
PROPOSED ALTERATION FOR: MR. & MRS. LAURITA 468 CAMBRIDGE ROAD RIDGEMOOD, N.J.	
AREA STUDY	
<b>EDWARD A. EASSE</b> ARCHITECT • PLANNER HAWTHORNE, N.J. 07506 (973) 427-0606	
EDWARD A. EASSE 	
N.J. R.A. C-8891 N.J. P.P. 3115 PA. R.A. B-9779 N.Y. R.A. 019376 CT. R.A. 08285	
DRAWN BY: JP	JOB NO. 24-074
SCALE: AS NOTED	SHEET NO.
DATE: 12-04-24	AS-1
ISSUED: FOR:	