

PROPERTY SITUATED IN THE VILLAGE OF RIDGEWOOD, BERGEN COUNTY, NEW JERSEY

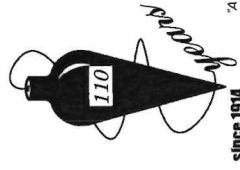
Location Survey of Dwelling on Property known as Lot 1 in Block 2206 as shown on the current Tax Assessment Map of the Village of Ridgewood, County of Bergen, and State of New Jersey.

Certified to: JAY ERIC NIPE SR.; to be correct.

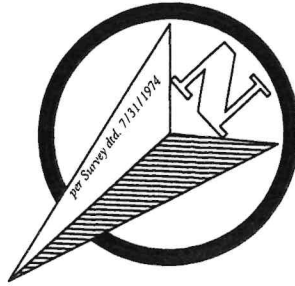
Scale: 1" = 30 feet

Steven Koestner

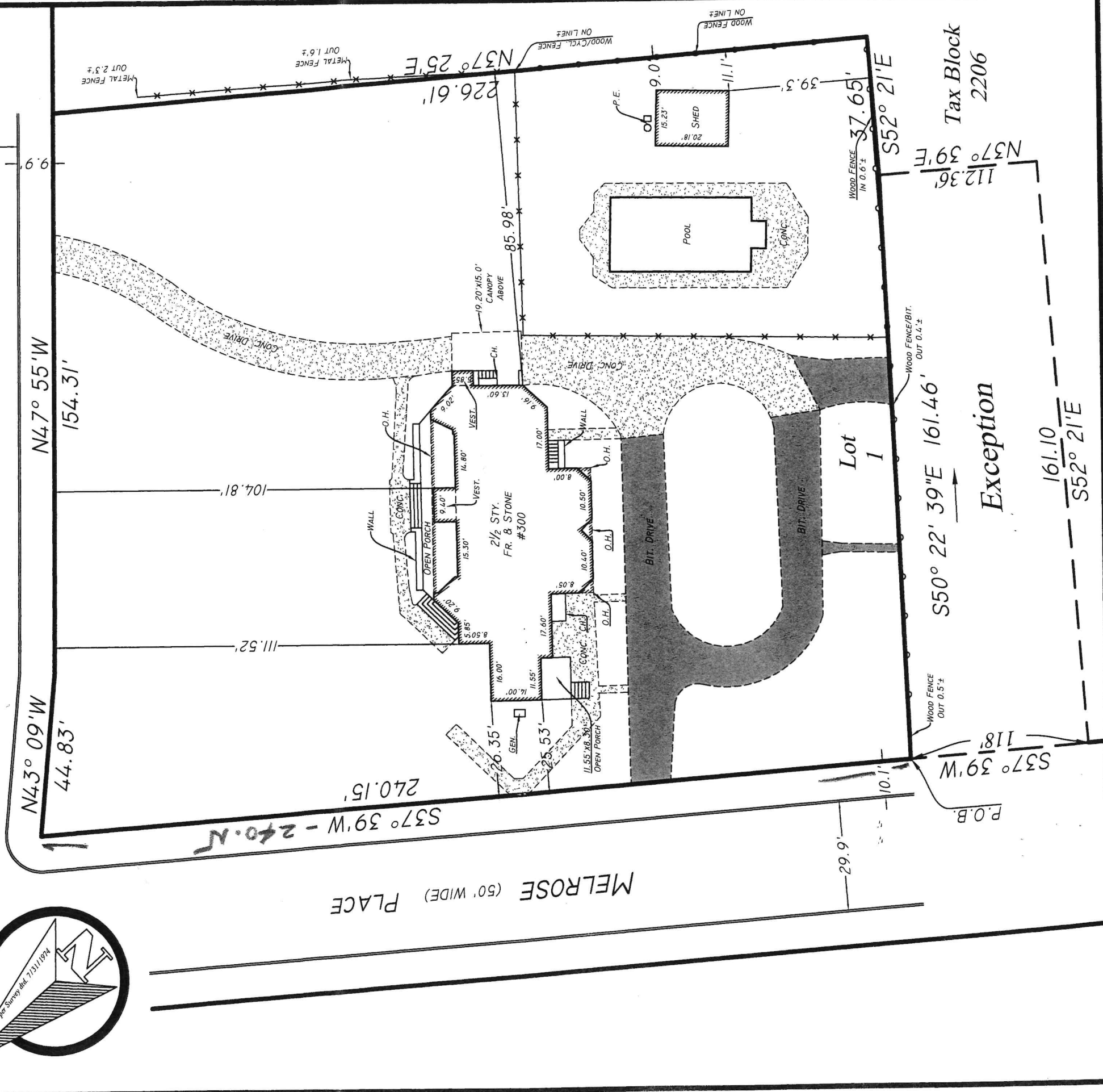
STEVEN L. KOESTNER
P.E. & L.S. NJ LIC. # 27901/ NY LIC. # 50865
KOESTNER ASSOCIATES
PROFESSIONAL ENGINEERS & LAND SURVEYORS
HACKENSACK, N.J. 07602
August 21, 2024



A WRITTEN WAIVER AND DIRECTION NOT TO SET CORNER MARKERS HAS BEEN OBTAINED FROM THE ULTIMATE USER PURSUANT TO P.L. 2003, C.16(C45:9-36.3) AND N.J.A.C. 13:40-4.5.(10)



GODWIN (50' WIDE) AVE.



Tax Block 2206

Exception

DC1-24/147