

i. Current Aerial in Richard Grubb Associates Archaeological Report



Figure 1.3: Aerial map of the APE
(NJGIS, Digital Orthographic Imagery 2020).

ii. USGS Quad in Richard Grubb Associates Archaeological Report



Figure 1.1: USGS map
(1997 USGS 7.5' Quadrangle: Hackensack, NJ).

iii. Road Map in Richard Grubb Associates Archaeological Report

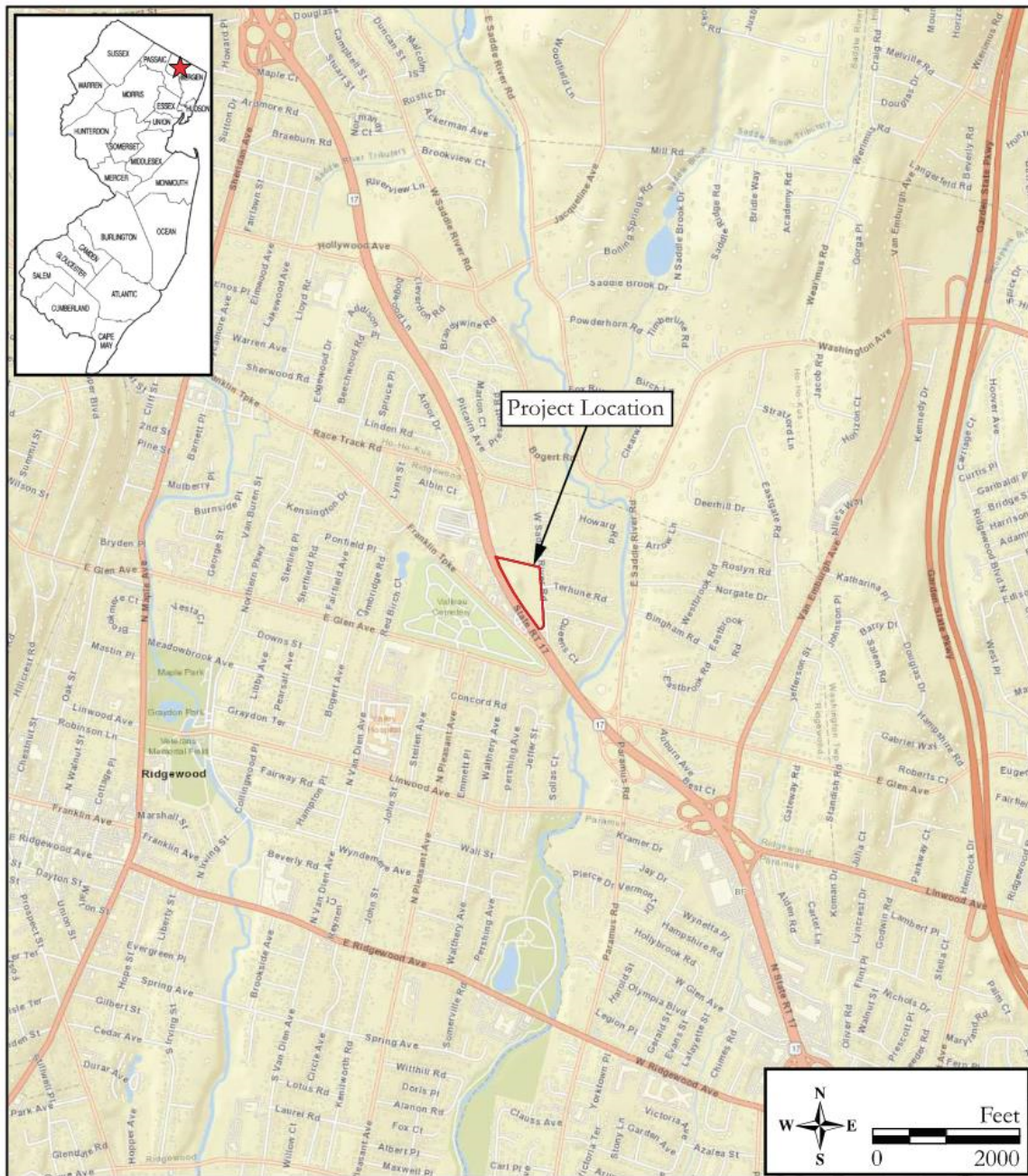


Figure 1.2: Road map
(2022 ESRI, World Street Map).