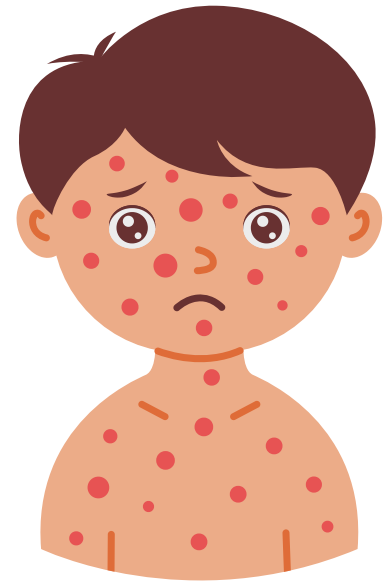


# Know Your Immunity Status for Measles

With the uptick in measles cases nationwide, we encourage you to be aware of your immunity status.

If you cannot identify your immunity status after an exposure, you will be advised to **QUARANTINE**.



**Generally, a person is considered immune if they:**

- Had measles in the past, and have laboratory confirmation to prove it.
- Received a blood test that shows whether the body has antibodies to fight off the virus.
- Have written documentation of vaccination with measles-containing vaccine in the past (MMR vaccine). For example:
  - One or more doses of a measles-containing vaccine administered on or after the first birthday for preschool-age children and adults not at high risk.
  - Two doses of measles-containing vaccine for school-age children and adults at high risk, including college students, health care personnel, and international travelers.
- Were born before 1957.

**Contact a healthcare provider if you have questions regarding your immunity status.**

