

GENERAL NOTES

1. SITE PLAN BASED ON: "LOCATION AND TOPOGRAPHIC SURVEY OF 246-264 SOUTH BROAD STREET, LOT 12, LOT 13 AND LOT 14 IN BLOCK 3905, VILLAGE OF RIDGEWOOD, COUNTY OF BERGEN, N.J.", PREPARED BY BERTIN ENGINEERING, MILOSLAV REHAK, NJPLS NO. 43233, FILE NO. 22-146, D.W.C. NO. SV-1, DATED MARCH 29, 2022.
2. ALL FEATURES ARE EXISTING TO REMAIN UNLESS OTHERWISE NOTED. PROPOSED FEATURES AS SHOWN IN FULL TONE. EXISTING FEATURES ARE SHOWN IN HALF TONE. EXISTING FEATURES TO BE REMOVED ARE SHOWN AS DASHED, OR ARE NOTED.
3. LOCATION OF ALL UNDERGROUND UTILITIES IS APPROXIMATE AND SHOULD BE VERIFIED BEFORE EXCAVATION OR CONSTRUCTION BEGINS. CALL DIG HOTLINE 1-800-272-1000.
4. UNLESS OTHERWISE NOTED, MAINTAIN EXISTING YARD GRADES AND SLOPES.
5. THE SITE PLAN(S) SUPERSEDES ALL STANDARD DRAWINGS.
6. UNLESS OTHERWISE NOTED, ALL DIMENSIONS AND RADII ARE SHOWN TO THE FRONT FACE OF CURBS OR FACE OF WALLS.
7. UNLESS OTHERWISE NOTED, ALL RADII ARE TWO FEET (2').
8. LAWN AND/OR DECIDUOUS AND ORNAMENTAL TREE PLANTING AREAS CAN BE USED FOR SNOW STORAGE (SEE LOCATIONS INDICATED AND SHEET C2.4).

TRAFFIC SIGN LEGEND

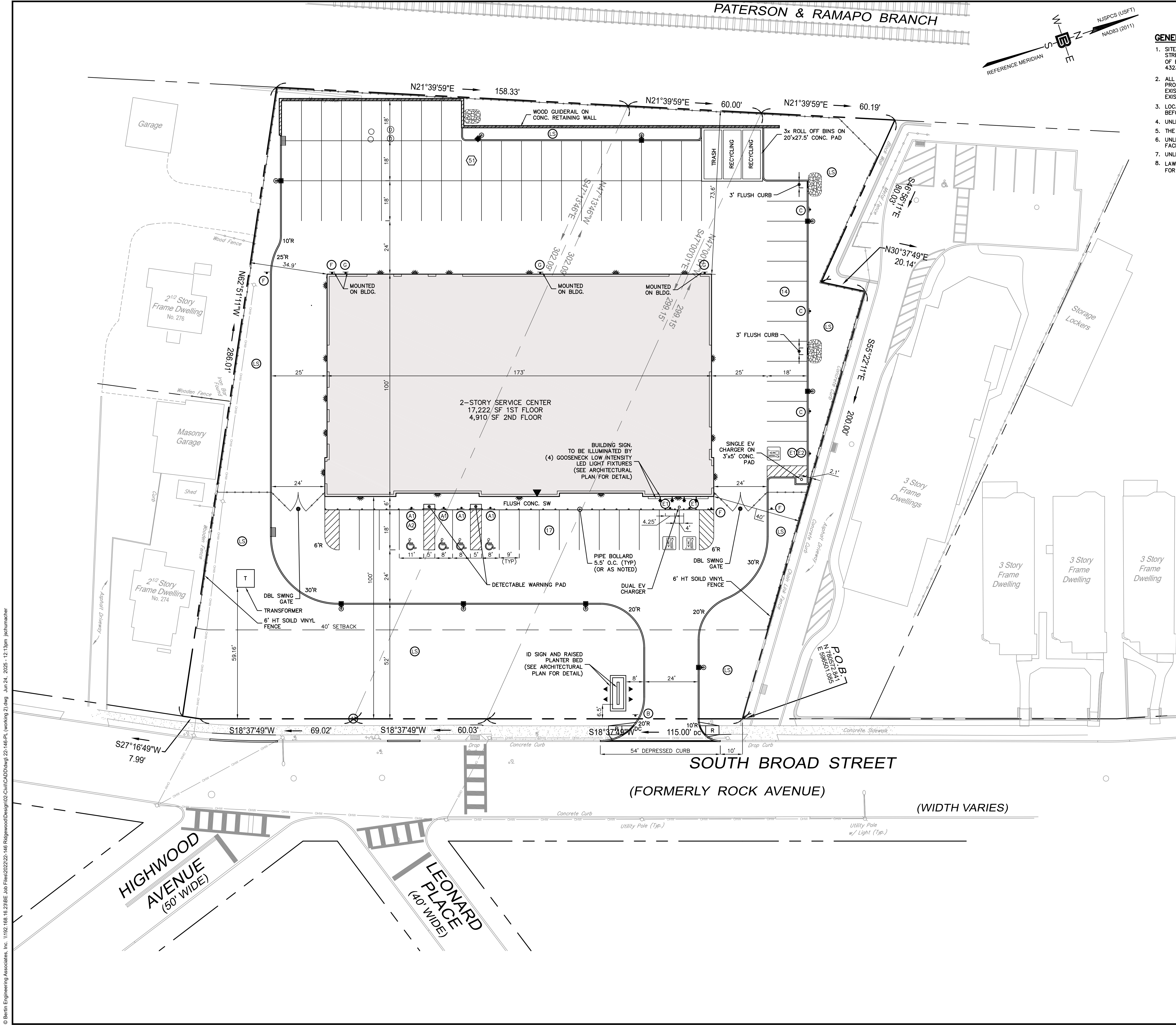
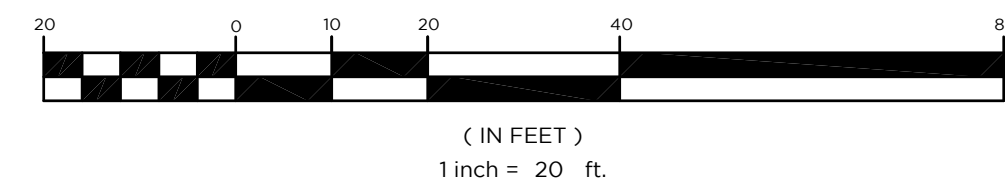
ALL TRAFFIC SIGNS MUST CONFORM IN FACE DESIGN AND CONSTRUCTION TO SPECIFICATIONS FOUND IN THE MANUAL ON UNIFORM TRAFFIC CONTROL DEVICES, U.S.D.O.T., AND FEDERAL HIGHWAY ADMINISTRATION, SPECIFICALLY, REGULATORY & WARNING SIGNS SHALL BE FABRICATED OF FLAT ALUMINUM SHEETS AND SHALL BE COVERED WITH DIAMOND GRADE REFLECTIVE SHEETING, SERIES 4000 TYPE XI DESIGNATION PER ASTM.

- (A) R7-8N (12"x18")
- (A2) R7-8c (12"x6")
- N-17 (10"x12")
- (B) R1-1 (30"x30")
- (C) 'EMPLOYEE PARKING ONLY' (12"x18")
- (E) D9-11b (24"x24")
- (E2) R7-1 MOD (12"x18")
- (F) R5-1 (30"x30")
- (G) R6-1L (36"x12")

LEGEND

- EOP EXISTING EDGE OF PAVEMENT
- R TRAFFIC SIGN
- SW AREA LIGHT
- DC FIRE HYDRANT
- UTILITY POLE
- GAS VALVE
- WATER VALVE
- SANITARY MANHOLE
- DRAINAGE MANHOLE
- MONITORING WELL
- EOP PROPOSED EDGE OF PAVEMENT
- R HANDICAP RAMP
- SW SIDEWALK
- DC CROSSWALK
- DC DEPRESSED CURB
- FIRE HYDRANT
- DRAINAGE MANHOLE
- CURB INLET
- YARD INLET
- TRAFFIC SIGN
- AREA LIGHT
- L LANDING
- L DRAINAGE MANHOLE
- L CURB INLET
- L LANDSCAPING
- L No. OF PARKING SPACES
- L No. OF SPACES FOR SERVICED VEHICLES

GRAPHIC SCALE



66 GLEN AVENUE
GLEN ROCK, NJ 07452
P 201.670.6688
F 201.670.3788
www.bertinengineering.com



CALISTO J. BERTIN, P.E.
PROFESSIONAL ENGINEER
CT LIC. NO. 12950 NJ LIC. NO. 28845
MA LIC. NO. 40595 NY LIC. NO. 60022
NH LIC. NO. 9368 RI LIC. NO. 6694

SHAN-PEI FANCHIANG, P.E.
PROFESSIONAL ENGINEER
NJ LIC. NO. 37073
NY LIC. NO. 071209

NO.	DATE	REVISION
6	10-20-22	REVISE DRIVEWAY LAYOUT
5	10-20-22	UPDATE SITE LAYOUT
4	11-11-24	RELOCATE AND ADD DMS FOR TRANSFORMER
3	5-8-23	RELOCATE AND ADD DMS FOR TRANSFORMER
2	2-11-23	REVISE FENCES, PARKING LAYOUT, ADD TANDM PARKING
1	10-20-22	ADD EV PARKING, RECYCLING CONTAINERS AND MONUMENT SIGN WITH PLANTING BED

SITE PLAN

PROJECT
MOUNTAIN VIEW AUTO BODY
BLOCK 3905, LOTS 12, 13 & 14
246-264 SOUTH BROAD STREET
VILLAGE OF RIDGEWOOD
BERGEN COUNTY, NEW JERSEY

CLIENT
MOUNTAIN VIEW AUTO
96 NEWARK POMPTON TURNPIKE
WAYNE, N.J. 07470

CERTIFICATE OF AUTHORIZATION
24GA28068900 / 21MH00002800

DRAWN BY: CB JR. CHECKED BY: S.P.F.
SCALE: 1"=20' PROJECT NO: 22-146
DATE: 7/02/24 REVISION NO: 6

DRAWING NO: **C2.2**