

NOTE: IN AREAS WHERE THERE ARE CONFLICTS (ENVIRONMENTAL IMPACTS, EXCESSIVE TREES, SHRUBS, ROCK WALLS, ETC.), THE SIDEWALK IS DESIGNED AT THE MINIMUM WIDTH OF 4'. A 5' WIDE SIDEWALK WOULD INTRODUCE ADDITIONAL IMPACTS. IF ADDITIONAL IMPACTS ARE INTRODUCED, IT WOULD BE RECOMMENDED TO PROVIDE THE STANDARD 3' GRASS BUFFER AND A 4' WIDE SIDEWALK.

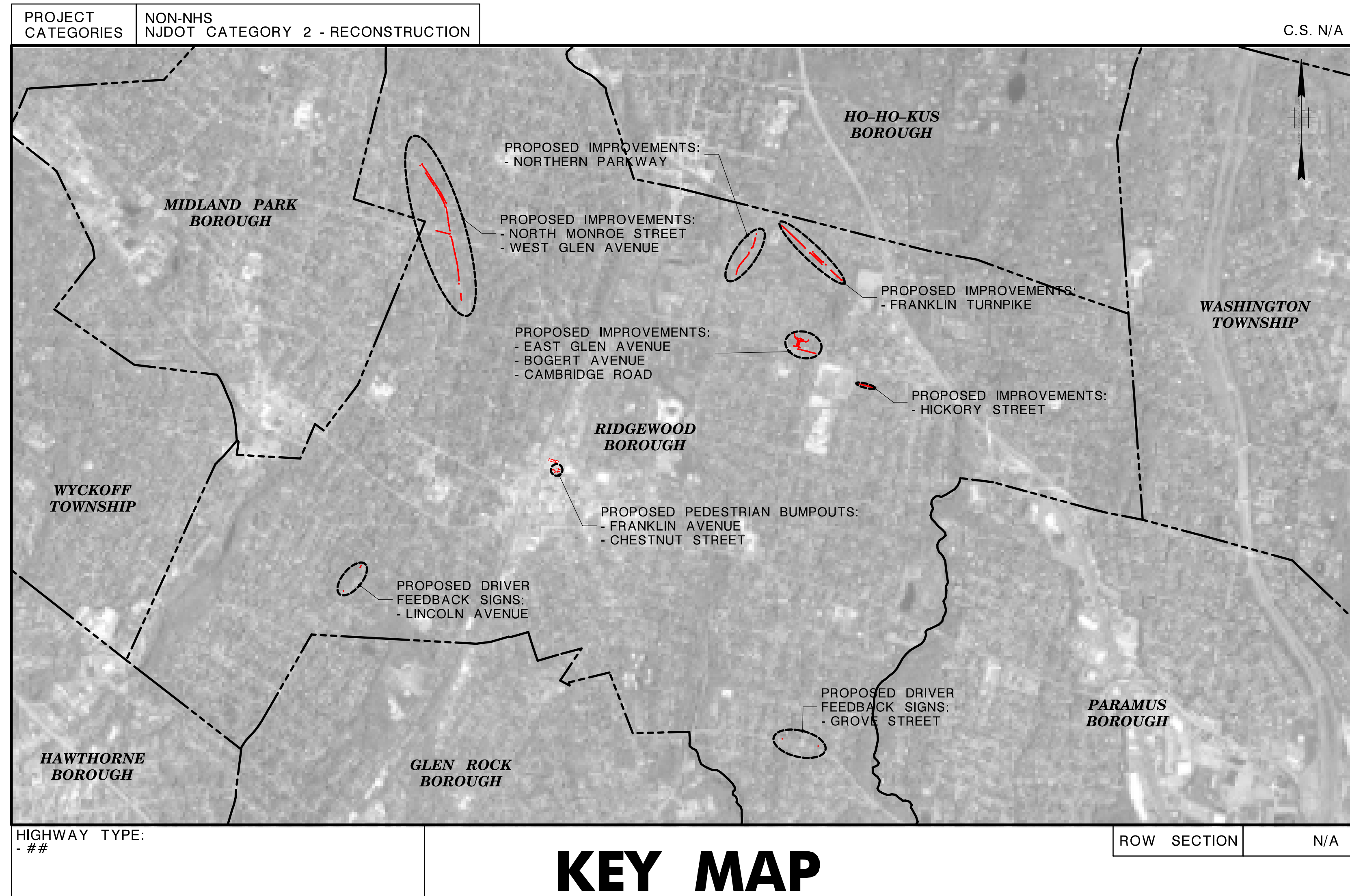
Village of Ridgewood

PLANS OF VILLAGE OF RIDGEWOOD SAFE ROUTES TO SCHOOL DESIGN ASSISTANCE RIDGEWOOD SRTS 2016

VILLAGE OF RIDGEWOOD
SCALES AS INDICATED

BERGEN COUNTY
OCTOBER 2020

UTILITIES	
CABLE	##
ELECTRIC	##
GAS	##
SANITARY SEWER	##
SANITARY SEWER	##
TELEPHONE	##
WATER	##



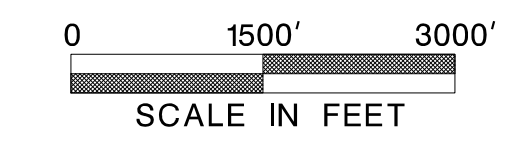
INDEX OF SHEETS	
SHEET NO.	DESCRIPTION
1	KEY
2	ESTIMATE - DISTRIBUTION OF QUANTITIES
3	PLAN SHEET INDEX
4	CONSTRUCTION LEGEND
5 - 22	CONSTRUCTION PLANS
23	TRAFFIC CONTROL & STAGING PLANS

STANDARD ROADWAY CONSTRUCTION - TRAFFIC CONTROL - BRIDGE CONSTRUCTION DETAILS BOOKLET 2016, AND STANDARD ELECTRICAL DETAILS BOOKLET, 2007, ARE APPLICABLE TO THIS PROJECT EXCEPT FOR THOSE DETAILS CONTAINED HEREIN.

MID-POINT OF PROJECT
LATITUDE : 40° 97' 93" ± N
LONGITUDE : 74° 11' 65" ± W

**PROGRESS PRINT
08-12-2021
FOR DISCUSSION
PURPOSES ONLY**

KEY MAP



Submitted by _____ Date _____
 ###
 Approved by _____ Date _____
 ###

"CHANGES MADE TO THESE PLANS SINCE SIGNATURE BY THE CONSULTANT MAY BE DETERMINED BY COMPARISON OF THE PLANS FILED AT THE DEPARTMENT WITH THOSE FILED AT THE OFFICE OF THE CONSULTANT"

NV5, INC.

SEQ NO.	ITEM NO.	DESCRIPTION	UNIT	CONTRACT QUANTITY	PLAN SHEET TOTALS	IF AND WHERE DIRECTED	AS-BUILT QUANTITY	DISTRIBUTION: PLAN SHEET QUANTITY															
0001	151006M	PERFORMANCE BOND AND PAYMENT BOND	DOLL	DOLL																			
0002	152015P	POLLUTION LIABILITY INSURANCE	DOLL	DOLL																			
0003	154003P	MOBILIZATION	L.S.	L.S.																			
0004	157004M	CONSTRUCTION LAYOUT	DOLL	DOLL																			
0005	TBD	SOIL EROSION AND SEDIMENT CONTROL	L.S.	L.S.																			
0006	TBD	MAINTENANCE AND PROTECTION OF TRAFFIC	L.S.	L.S.																			
0007	161003P	FINAL CLEANUP	L.S.	L.S.																			
0008	201003P	CLEARING SITE	L.S.	L.S.																			
0009	202009P	EXCAVATION, UNCLASSIFIED	C.Y.	1036	990	46																	
0010	401042M	HOT MIX ASPHALT 9.5 M 64 SURFACE COURSE	T	45	44	1																	
0011	401099M	CONCRETE BASE COURSE, 10" THICK	S.Y.	2369	2368	1																	
0012	606012P	CONCRETE SIDEWALK, 4" THICK	S.Y.	2856	2832	24																	
0013	606057P	CONCRETE DRIVEWAY, REINFORCED, 6" THICK	S.Y.	36	34	2																	
0014	606084P	DETECTABLE WARNING SURFACE	S.Y.	1935	1888	47																	
0015	607021P	9" X 18" CONCRETE VERTICAL CURB	L.F.	2691	607	32																	
0016	TBD	DRIVER FEEDBACK SIGN	UNIT	4	4	0																	

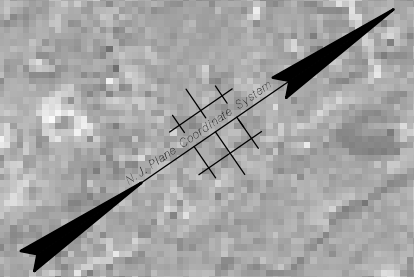
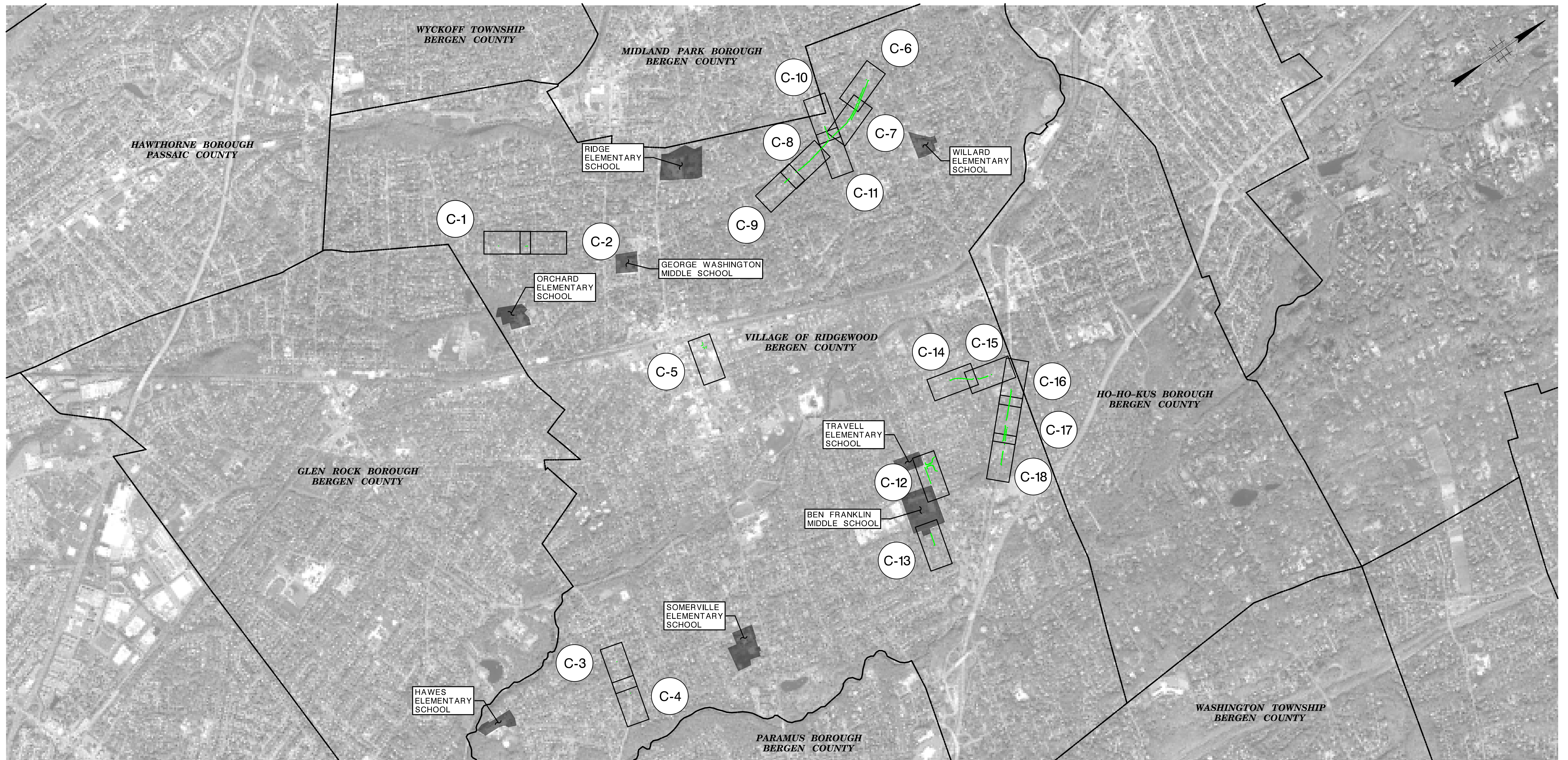
ESTIMATE - DISTRIBUTION OF QUANTITIES

PROJECT: VILLAGE OF RIDGEWOOD
 SAFE ROUTES TO SCHOOL DESIGN ASSISTANCE
 RIDGEWOOD SRTS 2016

NV5, INC.

VILLAGE OF RIDGEWOOD

COUNTY OF BERGEN



- GENERAL NOTES:
- SOURCE OF MAPPING:
 - NV5 SURVEY
 - SELECT NEARMAP AERIAL IMAGERY
 - NJ OFFICE OF INFORMATION TECHNOLOGY (NJOIT), OFFICE OF GEOGRAPHIC INFORMATION SYSTEMS (OGIS) (2015)
 - SOURCE OF TAX PARCEL INFORMATION:
 - NJGIN WEBSITE (BOUNDARIES APPROXIMATE)
 - BOROUGH OF RIDGEWOOD TAX MAPS
 - SOURCE OF UTILITY INFORMATION:
 - UTILITY VERIFICATION PROCESS

PROGRESS PRINT
08-12-2021

REVISION	BY	C'K'D	DATE

NEW JERSEY DEPARTMENT OF TRANSPORTATION

PLAN SHEET INDEX

VILLAGE OF RIDGEWOOD
SAFE ROUTES TO SCHOOL DESIGN ASSISTANCE
RIDGEWOOD SRTS 2016 - PHASE 1 - RIDGEWOOD PUBLIC SCHOOLS
PRELIMINARY ENGINEERING PHASE

NVS, INC.
CERTIFICATION OF AUTHORIZATION NO. 24GA27930500

FILE: \\ndc21.rdc.com\env\Project\29860-0000000-00 - Ridgewood - SRTS\Technical\01-CADD\Plan_Sheet_Index\PSI-01.dgn

NEW JERSEY DEPARTMENT OF TRANSPORTATION STANDARD LEGEND

STATE	FEDERAL PROJECT NO.
N.J.	

Linear Features

Existing	PROPOSED	
W	W	Water Main (Size)
G	G	Gas Main (Size)
T	T	Telephone Conduit
E	E	Electric Conduit (Highway or Utility)
CTV	CTV	Cable TV
FO	FO	Fiber Optic
(Size & Type)	(SIZE & TYPE)	Intelligent Transportation System (Wires & Cables)
(Over 30" - Draw to Size)		Sanitary Sewers or Storm Drains
		Pavements (Concrete or Bituminous)
		Shoulders
		Curbs
(F) (C)	(C) (F)	Slopes (Cut & Fill)
5+00	10+00	Base Line
Existing R.O.W. Line	PROPOSED R.O.W. LINE	Twp., City, County Lines
Existing R.O.W. & No Access Line	PROP. R.O.W. & NO ACCESS LINE	Right of Way Lines (Access Permitted)
R	R	Right of Way Lines (No Access)
- x - x - x - x - x -	- x - x - x - x - x -	Easements
- x - x - x - x - x -	- x - x - x - x - x -	Property Line
- x - x - x - x - x -	- x - x - x - x - x -	Fence (Size & Type)
- x - x - x - x - x -	- x - x - x - x - x -	Reset Fence
- x - x - x - x - x -	- x - x - x - x - x -	Beam Guide Rail
- x - x - x - x - x -	- x - x - x - x - x -	Reset Beam Guide Rail
- x - x - x - x - x -	- x - x - x - x - x -	Noise Walls
- x - x - x - x - x -	- x - x - x - x - x -	Wetland Limit Line
- x - x - x - x - x -	- x - x - x - x - x -	Silt Fence
- x - x - x - x - x -	- x - x - x - x - x -	Ditches
- x - x - x - x - x -	- x - x - x - x - x -	Railroad Tracks
- x - x - x - x - x -	- x - x - x - x - x -	Tree Line
- x - x - x - x - x -	- x - x - x - x - x -	Mean High Water Line
- x - x - x - x - x -	- x - x - x - x - x -	Tidelands Line
	PRESERVE EXISTING VEGETATION	

Topographical Features

Existing	PROPOSED	
ES	ES	Inlets (Label Type)
ES	ES	Inlets (Type ES)
M	M	Manholes (Label Type or Utility)
R	R	Reset (Inlets or Manholes)
R	R	Reconstructed (Inlets or Manholes)
R	R	Cast Iron Extension (Frame or Ring) (Inlet or Manhole)
	R	New Manhole Casting, Square Frame, Circular Cover
R	R	R.C. End Section or C.M. Headwall
R	R	Headwalls
R	R	Headwalls & Aprons
R	R	Water Gate Valves
R	R	Reset Water Gate Valves
R	R	Gas Gate Valves
R	R	Reset Gas Gate Valves
R	R	Hydrants
R	R	Reset Hydrants
R	R	Utility Pole (Type & Number)
R	R	Temporary Utility Pole
R	R	Traffic Signal
R	R	Junction Box
R	R	Fiber Optic Junction Box
R	R	Junction Box Foundation
R	R	Signs
R	R	Vertical Panels
R	R	Camera (With Blind Spot)
R	R	Dynamic Message Sign (DMS)
R	R	Guide Rail End Terminals
R	R	Beam Guide Rail Anchorages
R	R	Monuments
R	R	ROW Monument (ROW Control Points)

Topographical Features

Existing	PROPOSED	
TEST PIT NUMBER	TEST PIT NUMBER	Test Pit
BORING NUMBER	BORING NUMBER	Borings (Boring Number)
Boring Number	Boring Number	Deciduous Tree (Size, Kind)
Boring Number	Boring Number	Evergreen Tree (Size, Kind)
Boring Number	Boring Number	Shrub
Boring Number	Boring Number	Hedge
Boring Number	Boring Number	Wetland

Double Reference Codes

EDQ	ESTIMATE AND DISTRIBUTION OF QUANTITIES - ROADWAY
TS	TYPICAL SECTIONS
PSI	PLAN SHEET INDEX
CL	CONSTRUCTION LEGEND
C	CONSTRUCTION PLANS
EP	ENVIRONMENTAL PLANS, SOIL EROSION & SEDIMENT CONTROL PLANS
D	DRAINAGE PLANS
DTL	CONSTRUCTION DETAILS
P	PROFILES
T	TIES
G	GRADES
TC	TRAFFIC CONTROL AND STAGING PLANS
TSP	TRAFFIC SIGNAL PLANS
E	ELECTRICAL PLANS
HL	HIGHWAY LIGHTING PLANS
ITS	INTELLIGENT TRANSPORTATION SYSTEM PLANS
U	UTILITY PLANS
UD	UTILITY DETAILS
SL	SIGN LOCATION PLANS
TSS	TRAFFIC SIGNING AND STRIPING PLANS
STD	SIGN TEXT DETAILS
L	LANDSCAPE PLANS
MS	METHOD OF CROSS SECTIONS
X	CROSS SECTIONS
EQ	ESTIMATE OF QUANTITIES - BRIDGE
B	BRIDGE PLANS

Miscellaneous Symbols

Items With No Alternate	Alternate Items OR	For Alternate Pipe Items (C) = Concrete (M) = Metal
Milling		
Paving		
Stone Slope Protection		
Removal of Concrete Base Course & Concrete Surface Courses		
Building to be Removed & Paid for Under Clearing Site		
PARCEL	Demolition No. & Parcel No. of Building to be Demolished	
PROFILE	LEVEL LINE	
High Point		
Low Point		
B.M.	Bench Mark	

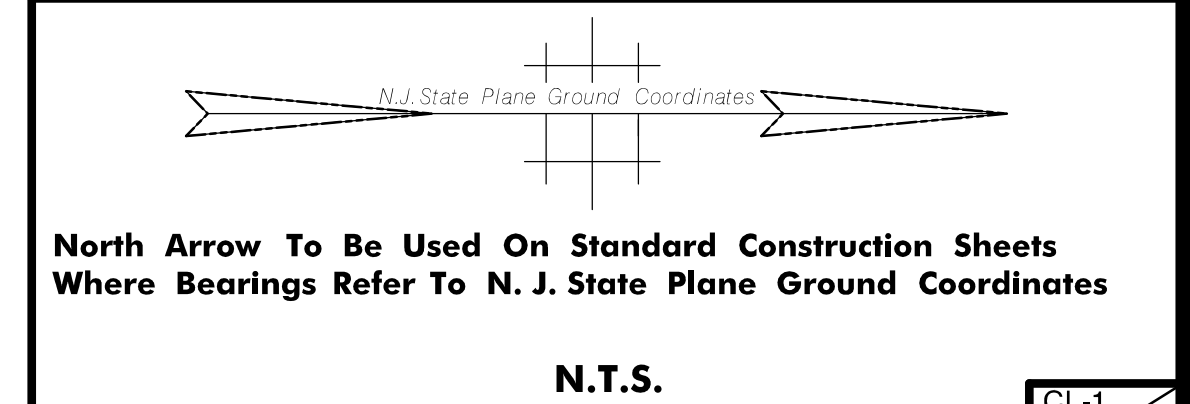
GENERAL NOTES:

ABBREVIATIONS USED IN THIS CONTRACT

AH., BK.	AHEAD, BACK	IP	IRON PIN	RCCP, R.C.C.P.	REINFORCED CONCRETE CULVERT PIPE
B.L.	BASELINE	J.B.	JUNCTION BOX	RCP, R.C.P.	REINFORCED CONCRETE PIPE
B.M.	BENCH MARK	LT., RT.	LEFT, RIGHT	RMC, R.M.C.	RIGID METALLIC CONDUIT
B.T.	BELL TELEPHONE	L.O.P.	LIMIT OF PAVEMENT (PAVING)	RNMC, R.N.M.C.	RIGID NON-METALLIC CONDUIT
BIT., BITUM.	BITUMINOUS	L.O.M.	LIMIT OF MILLING	ROW, R.O.W.	RIGHT OF WAY
BLDG.	BUILDING	M.B.	MAILBOX	R.R.	RAILROAD
C.L.	CENTERLINE	M.P.	MILE POST	RTE., RT.	ROUTE
C.I.P.	CAST IRON PIPE	MAX.	MAXIMUM	SAN.	SANITARY
D.I.P.	DUCTILE IRON PIPE	MIN.	MINIMUM	SDWK.	SIDEWALK
C.V.C.	CONCRETE VERTICAL CURB	NO.	NUMBER	S.H.D.	STATE HIGHWAY DEPARTMENT
CONC.	CONCRETE	N.T.S.	NOT TO SCALE	SHLD.	SHOULDER
CUL.V.	CULVERT	PAV'T.	PAVEMENT	S.S.L.	SURVEY LINE
D, DIA.	DIAMETER	PERF.	PERFORATED	S.O.D.	SUBBASE OUTLET DRAIN
D.C.	DROP CURB	P.G.L.	PROFILE GRADE LINE	STY.	STORY
DE	DITCH EXCAVATION	R, P.L.	PROPERTY LINE, PROFILE LINE	T	TANGENT
DEP., DP	DEPRESSED CURB	PK	PARKER KAYLON MASONRY NAIL	TBA	TO BE ABANDONED
DH	DRILL HOLE	POC, P.O.C.	POINT ON CURVE	TBR	TO BE REMOVED
DWY	DRIVEWAY	POL, P.O.L.	POINT ON LINE	TEL.	TELEPHONE
E.B., W.B., N.B., S.B.	EASTBOUND, WESTBOUND	POT, P.O.T.	POINT ON TANGENT	TEMP.	TEMPORARY
	NORTHBOUND, SOUTHBOUND	PRC, P.R.C.	POINT OF REVERSE CURVE	THK., TH.	THICK
EL., ELEV.	ELEVATION	PROP.	PROPOSED	TYP.	TYPICAL
EXIST.	EXISTING	PT, P.T.	POINT OF TANGENCY	U.D.	UNDERDRAIN
GR.	GRATE	PVC, P.V.C.	POLYVINYL CHLORIDE PIPE,	UP, U.P.	UTILITY POLE
HT.	HEIGHT		POINT OF VERTICAL CURVATURE	VAR.	VARIABLE, VARIES
H.W.	HEADWALL	PVI, P.V.I.	POINT OF VERTICAL INTERSECTION	WM	WATER METER
HYD.	HYDRANT	PVT, P.V.T.	POINT OF VERTICAL TANGENCY, PAVEMENT		
INV.	INVERT	R	RADIUS		

ELECTRICAL PLAN ABBREVIATIONS

CF	CUTOFF LUMINAIRE, TYPE
E	EXPRESSWAY LUMINAIRE
ID	IMAGE DETECTOR
IDC	IMAGE DETECTOR CABLE
JBF	JUNCTION BOX FOUNDATION
L	LUMINAIRE
LMA-A	LIGHTING MAST ARM, ALUMINUM
LMA-S	LIGHTING MAST ARM, STEEL
LSA	LIGHTING STANDARD, ALUMINUM
LSF	LIGHTING STANDARD, FIBERGLASS
LSS	LIGHTING STANDARD, STEEL
MAS	MAST ARM SIGN
MSC II	MEDIUM SEMI-CUTOFF LUMINAIRE, TYPE 2
MSC III	MEDIUM SEMI-CUTOFF LUMINAIRE, TYPE 3
PB	PUSH BUTTON
PSH	PEDESTRIAN SIGNAL HEAD
PSS	PEDESTRIAN SIGNAL STANDARD
TSH	TRAFFIC SIGNAL HEAD
TSMA-A	TRAFFIC SIGNAL MAST ARM, ALUMINUM
TSMA-S	TRAFFIC SIGNAL MAST ARM, STEEL
TSS-C	TRAFFIC SIGNAL STANDARD, ALUMINUM "C"
TSS-K	TRAFFIC SIGNAL STANDARD, ALUMINUM "K"
TSS-S	TRAFFIC SIGNAL STANDARD, STEEL
TSS-SC	TRAFFIC SIGNAL STANDARD, STEEL COMBINATION
TSS-T	TRAFFIC SIGNAL STANDARD, ALUMINUM "T"
UL-P	UNDERDECK LIGHTING, TYPE "P"
UL-W	UNDERDECK LIGHTING, TYPE "W"
V	VERTICAL LUMINAIRE



NEW JERSEY DEPARTMENT OF TRANSPORTATION

CONSTRUCTION LEGEND

VILLAGE OF RIDGEWOOD
SAFE ROUTES TO SCHOOL DESIGN ASSISTANCE
RIDGEWOOD SRTS 2016 - PHASE 1 - RIDGEWOOD PUBLIC SCHOOLS
PRELIMINARY ENGINEERING PHASE

NVS, INC.
CERTIFICATION OF AUTHORIZATION NO. 24GA27930500

REVISION	BY	C'K'D	DATE

VILLAGE OF RIDGEWOOD



COUNTY OF BERGEN

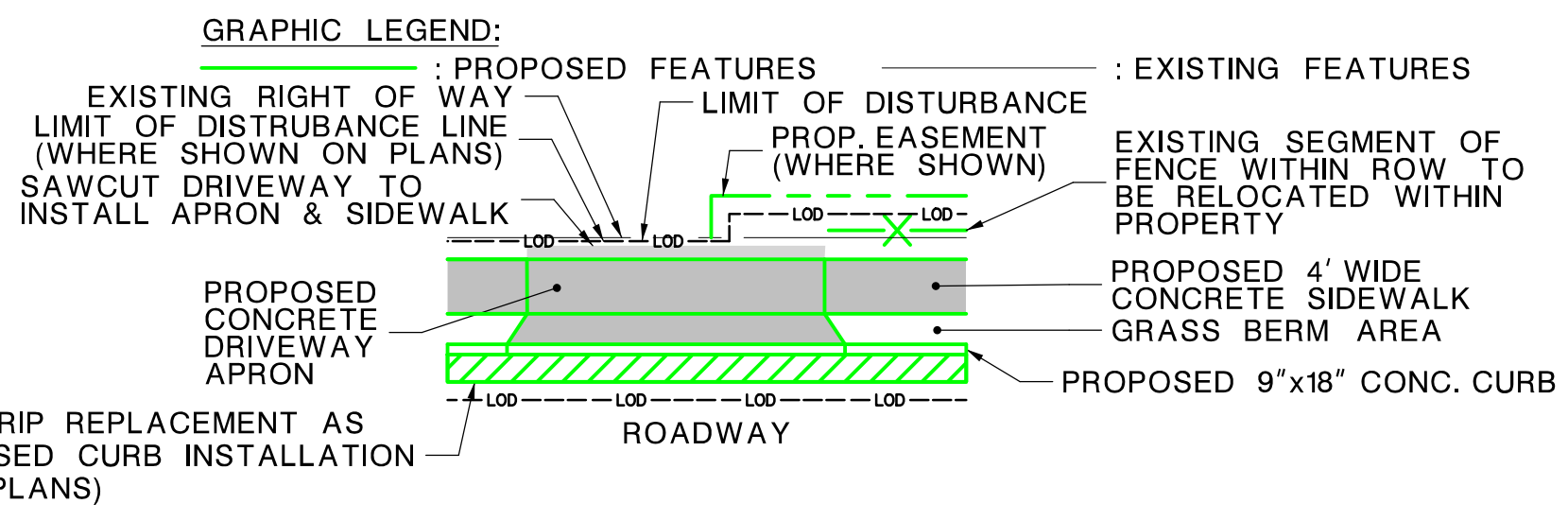


EXISTING FLASHING WARNING SIGN TO BE REMOVED FROM EXISTING POLE
LIMIT OF DISTURBANCE TYP.

PROPOSED DRIVER FEEDBACK SIGN TO BE MOUNTED TO EXISTING POLE
EXISTING OVERHEAD & UNDERGROUND WIRING TO BE USED TO POWER NEW SIGN

MATCHLINE
SHEET C-2

- GENERAL NOTES:**
- SOURCE OF MAPPING:
 - NVS SURVEY
 - SELECT NEARMAP AERIAL IMAGERY
 - NJ OFFICE OF INFORMATION TECHNOLOGY (NJGIT), OFFICE OF GEOGRAPHIC INFORMATION SYSTEMS (OGIS) (2015)
 - SOURCE OF TAX PARCEL INFORMATION:
 - NJGIN WEBSITE (BOUNDARIES APPROXIMATE)
 - BOROUGH OF RIDGEWOOD TAX MAPS
 - SOURCE OF UTILITY INFORMATION:
 - UTILITY VERIFICATION PROCESS



1'-6" ASPHALT STRIP REPLACEMENT AS PART OF PROPOSED CURB INSTALLATION (AS NOTED ON PLANS)

DRIVER FEEDBACK SIGN
ONLY PROPOSED IMPROVEMENTS ON THIS SHEET

PROGRESS PRINT
08-12-2021

REVISION	BY	C'D	DATE

NEW JERSEY DEPARTMENT OF TRANSPORTATION

CONSTRUCTION PLANS

VILLAGE OF RIDGEWOOD
SAFE ROUTES TO SCHOOL DESIGN ASSISTANCE
RIDGEWOOD SRTS 2016 - PHASE 1 - RIDGEWOOD PUBLIC SCHOOLS
PRELIMINARY ENGINEERING PHASE

NVS, INC.
CERTIFICATION OF AUTHORIZATION NO. 24GA27930500

5
23

FILE: \\nvd21.nvs.com\Users\Project\28609-00000000-00 - Ridgewood - SRTS\Technical\01-CADD\Construction\C-01.dwg

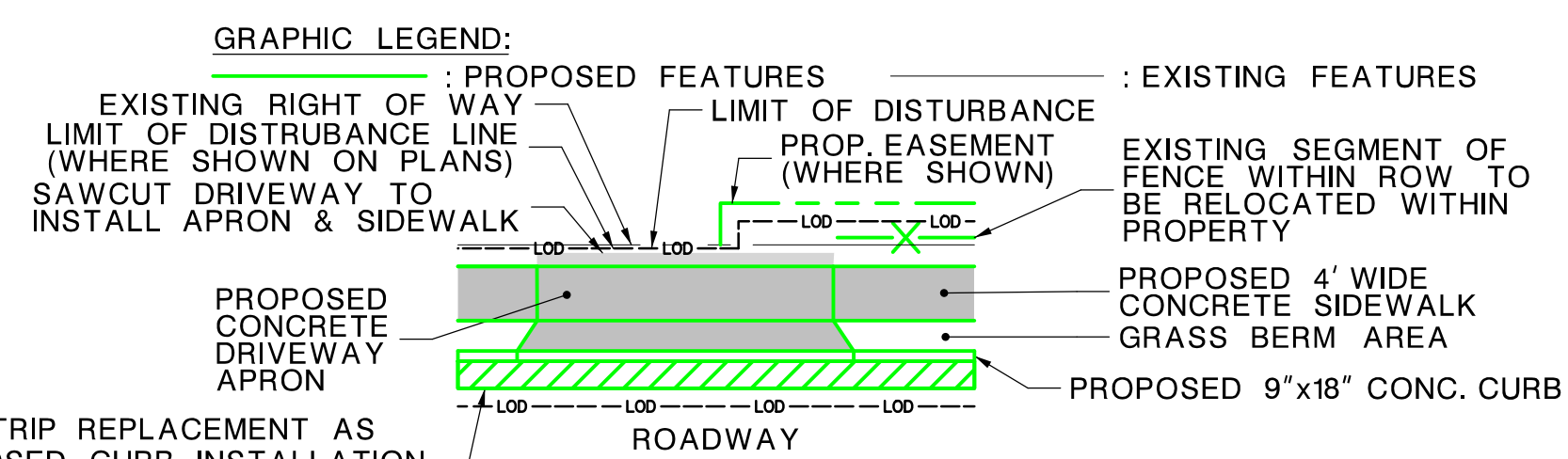
VILLAGE OF RIDGEWOOD



COUNTY OF BERGEN



- GENERAL NOTES:**
- SOURCE OF MAPPING:**
 - NV5 SURVEY
 - SELECT NEARMAP AERIAL IMAGERY
 - NJ OFFICE OF INFORMATION TECHNOLOGY (NJGIT), OFFICE OF GEOGRAPHIC INFORMATION SYSTEMS (OGIS) (2015)
 - SOURCE OF TAX PARCEL INFORMATION:**
 - NJGIN WEBSITE (BOUNDARIES APPROXIMATE)
 - BOROUGH OF RIDGEWOOD TAX MAPS
 - SOURCE OF UTILITY INFORMATION:**
 - UTILITY VERIFICATION PROCESS



1'-6" ASPHALT STRIP REPLACEMENT AS PART OF PROPOSED CURB INSTALLATION (AS NOTED ON PLANS)

DRIVER FEEDBACK SIGN
ONLY PROPOSED IMPROVEMENTS ON THIS SHEET

PROGRESS PRINT
08-12-2021

REVISION	BY	C'K'D	DATE

NEW JERSEY DEPARTMENT OF TRANSPORTATION

CONSTRUCTION PLANS

VILLAGE OF RIDGEWOOD
SAFE ROUTES TO SCHOOL DESIGN ASSISTANCE
RIDGEWOOD SRTS 2016 - PHASE 1 - RIDGEWOOD PUBLIC SCHOOLS
PRELIMINARY ENGINEERING PHASE

NVS, INC.
CERTIFICATION OF AUTHORIZATION NO. 24GA27930500

C-2
C-18

FILE: \\nvd21nvs.com\env\Projects\24620-0000000-00 - Ridgewood SRTS\Technical\01-CADD\Construction\C-02.dgn

VILLAGE OF RIDGEWOOD



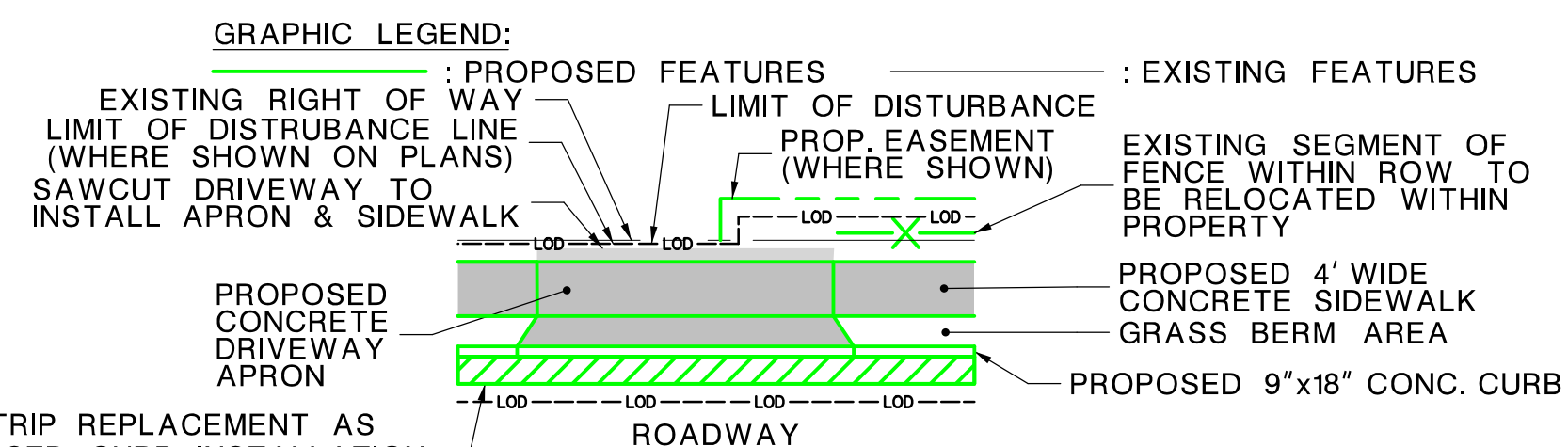
COUNTY OF BERGEN



GENERAL NOTES:

- SOURCE OF MAPPING:
 - NV5 SURVEY
 - SELECT NEARMAP AERIAL IMAGERY
 - NJ OFFICE OF INFORMATION TECHNOLOGY (NJOIT), OFFICE OF GEOGRAPHIC INFORMATION SYSTEMS (OGIS) (2015)
- SOURCE OF TAX PARCEL INFORMATION:
 - NJGIN WEBSITE (BOUNDARIES APPROXIMATE)
 - BOROUGH OF RIDGEWOOD TAX MAPS
- SOURCE OF UTILITY INFORMATION:
 - UTILITY VERIFICATION PROCESS

1'-6" ASPHALT STRIP REPLACEMENT AS PART OF PROPOSED CURB INSTALLATION (AS NOTED ON PLANS)



DRIVER FEEDBACK SIGN ONLY PROPOSED IMPROVEMENTS ON THIS SHEET

PROGRESS PRINT
08-12-2021

REVISION	BY	C'K'D	DATE

NEW JERSEY DEPARTMENT OF TRANSPORTATION

CONSTRUCTION PLANS

VILLAGE OF RIDGEWOOD
SAFE ROUTES TO SCHOOL DESIGN ASSISTANCE
RIDGEWOOD SRTS 2016 - PHASE 1 - RIDGEWOOD PUBLIC SCHOOLS
PRELIMINARY ENGINEERING PHASE

NVS, INC.
CERTIFICATION OF AUTHORIZATION NO. 24GA27930500

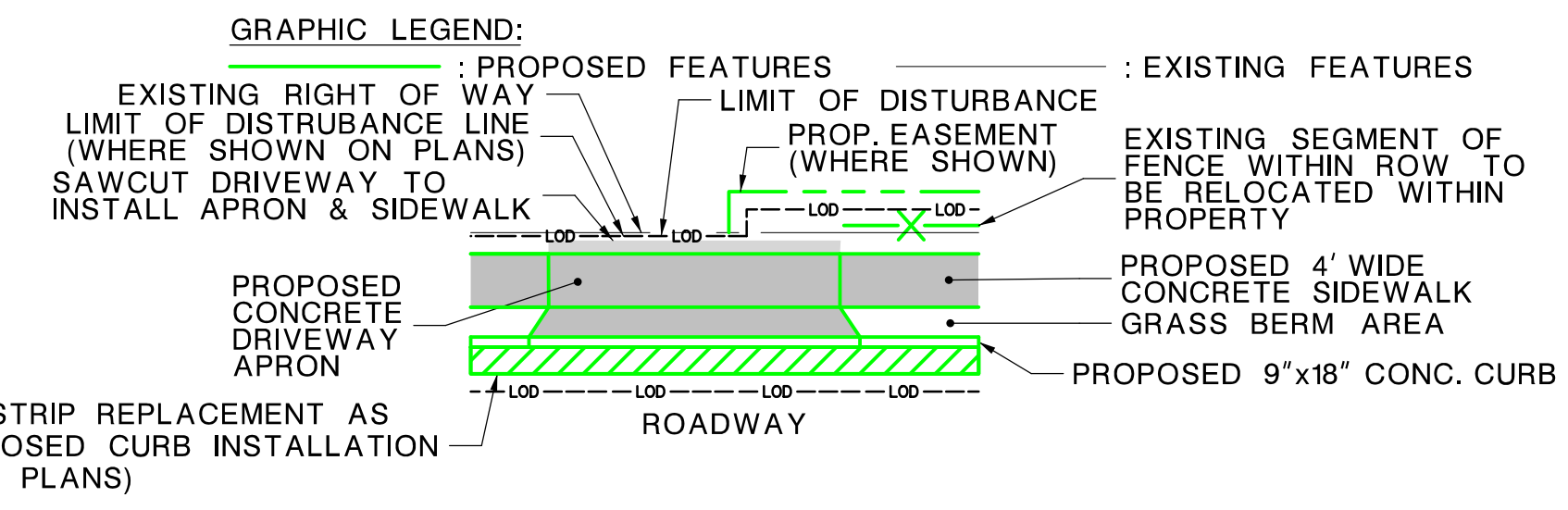
7
23

FILE: \\vd0221.nvs.com\Users\Project\28620-00000000-00 - Ridgewood - SRTS\Technical\01-CADD\Construction\C-03.dgn

NOTE: THE PROJECT INTENT IS TO RE-USE THE EXISTING WIRING AT THIS LOCATION. AN ALTERNATE OPTION AT THIS LOCATION IS TO RELOCATE THE SIGN FURTHER WEST NEAR THE ROADWAY PAINTED "SLOW SCHOOL ZONE". THE EXISTING LOCATION IS AMONGST TREES AND COULD EASILY BE MISSED. THIS HOWEVER WOULD REQUIRE A NEW ELECTRIC SERVICE.



- GENERAL NOTES:**
- SOURCE OF MAPPING:**
 - NV5 SURVEY
 - SELECT NEARMAP AERIAL IMAGERY
 - NJ OFFICE OF INFORMATION TECHNOLOGY (NJOIT), OFFICE OF GEOGRAPHIC INFORMATION SYSTEMS (OGIS) (2015)
 - SOURCE OF TAX PARCEL INFORMATION:**
 - NJGIN WEBSITE (BOUNDARIES APPROXIMATE)
 - BOROUGH OF RIDGEWOOD TAX MAPS
 - SOURCE OF UTILITY INFORMATION:**
 - UTILITY VERIFICATION PROCESS



DRIVER FEEDBACK SIGN ONLY PROPOSED IMPROVEMENTS ON THIS SHEET

PROGRESS PRINT 08-12-2021

REVISION	BY	C'D	DATE

NEW JERSEY DEPARTMENT OF TRANSPORTATION

CONSTRUCTION PLANS

VILLAGE OF RIDGEWOOD
SAFE ROUTES TO SCHOOL DESIGN ASSISTANCE
RIDGEWOOD SRTS 2016 - PHASE 1 - RIDGEWOOD PUBLIC SCHOOLS
PRELIMINARY ENGINEERING PHASE

NVS, INC.
CERTIFICATION OF AUTHORIZATION NO. 24GA27930500

8
23

FILE: \\nvd21nvs.com\env\Project\28620-00000000 - Ridgewood - SRTS\Technical\01-CADD\Construction\C-24.dgn

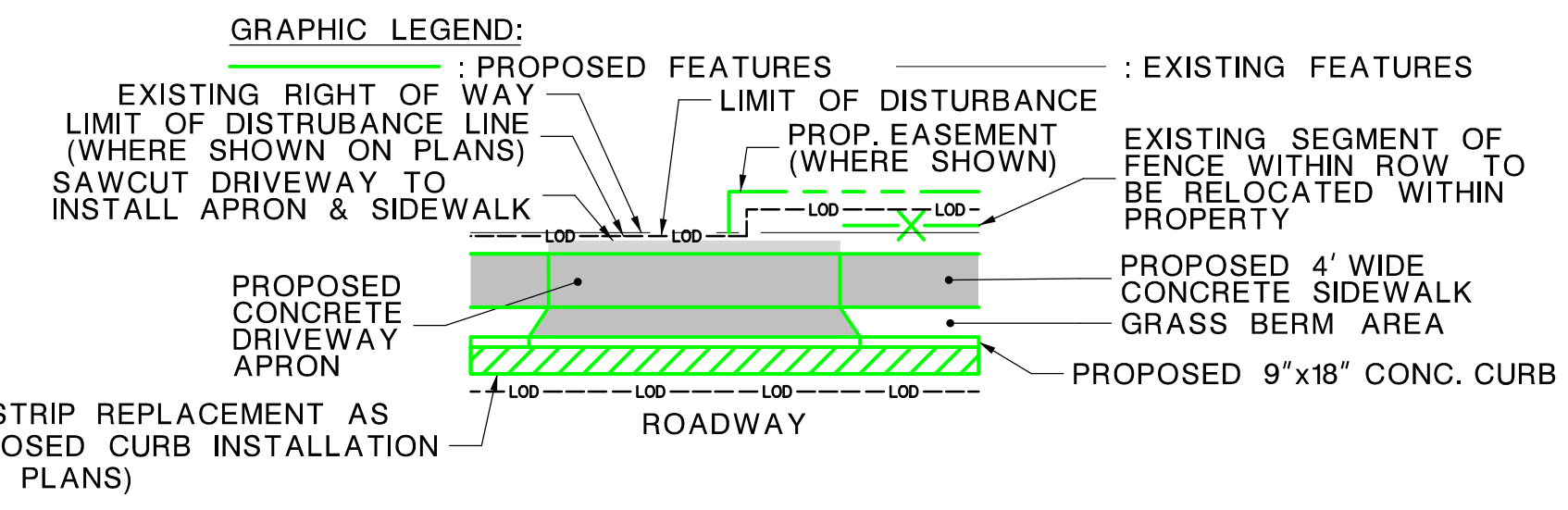
VILLAGE OF RIDGEWOOD



COUNTY OF BERGEN



- GENERAL NOTES:**
- SOURCE OF MAPPING:
 - NV5 SURVEY
 - SELECT NEARMAP AERIAL IMAGERY
 - NJ OFFICE OF INFORMATION TECHNOLOGY (NJIT), OFFICE OF GEOGRAPHIC INFORMATION SYSTEMS (OGIS) (2015)
 - SOURCE OF TAX PARCEL INFORMATION:
 - NJGIN WEBSITE (BOUNDARIES APPROXIMATE)
 - BOROUGH OF RIDGEWOOD TAX MAPS
 - SOURCE OF UTILITY INFORMATION:
 - UTILITY VERIFICATION PROCESS



PROGRESS PRINT
08-12-2021

NEW JERSEY DEPARTMENT OF TRANSPORTATION

CONSTRUCTION PLANS

VILLAGE OF RIDGEWOOD
SAFE ROUTES TO SCHOOL DESIGN ASSISTANCE
RIDGEWOOD SRTS 2016 - PHASE 1 - RIDGEWOOD PUBLIC SCHOOLS
PRELIMINARY ENGINEERING PHASE

NVS, INC.
CERTIFICATION OF AUTHORIZATION NO. 24GA27930500

REVISION	BY	C'K'D	DATE

9
23

FILE: \\nvd21.nvs.com\Users\Project\28620-0000000-00 - Ridgewood SRTS\Technical\01-CADD\Construction\2-25.dgn

VILLAGE OF RIDGEWOOD



COUNTY OF BERGEN

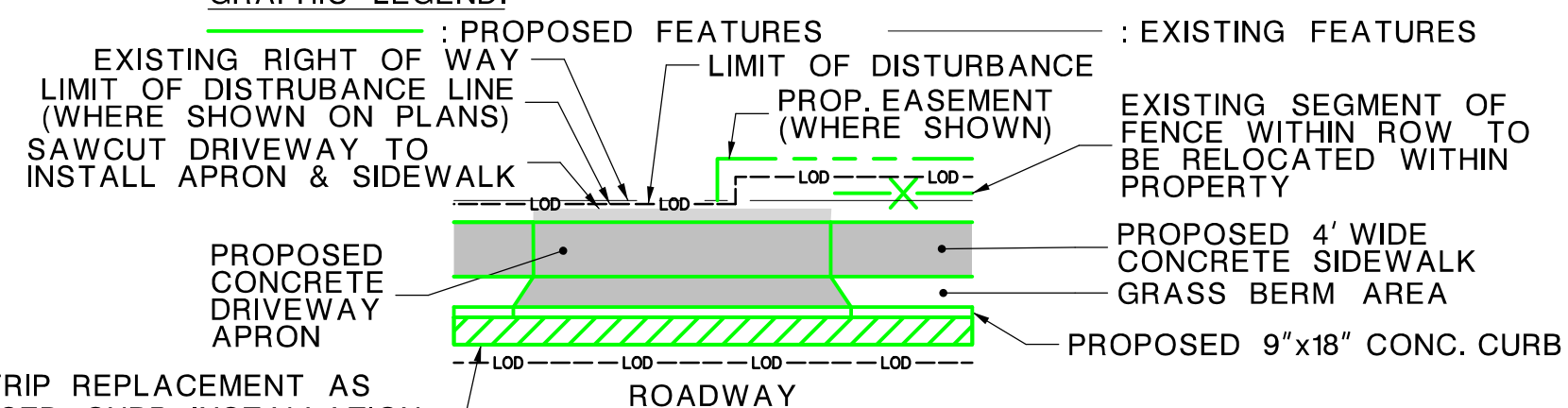


GENERAL NOTES:

- SOURCE OF MAPPING:
 - NV5 SURVEY
 - SELECT NEARMAP AERIAL IMAGERY
 - NJ OFFICE OF INFORMATION TECHNOLOGY (NJOIT), OFFICE OF GEOGRAPHIC INFORMATION SYSTEMS (OGIS) (2015)
- SOURCE OF TAX PARCEL INFORMATION:
 - NJGIN WEBSITE (BOUNDARIES APPROXIMATE)
 - BOROUGH OF RIDGEWOOD TAX MAPS
- SOURCE OF UTILITY INFORMATION:
 - UTILITY VERIFICATION PROCESS

1'-6" ASPHALT STRIP REPLACEMENT AS PART OF PROPOSED CURB INSTALLATION (AS NOTED ON PLANS)

GRAPHIC LEGEND:



PROGRESS PRINT
08-12-2021

REVISION	BY	C'K'D	DATE

NEW JERSEY DEPARTMENT OF TRANSPORTATION

CONSTRUCTION PLANS

VILLAGE OF RIDGEWOOD
SAFE ROUTES TO SCHOOL DESIGN ASSISTANCE
RIDGEWOOD SRTS 2016 - PHASE 1 - RIDGEWOOD PUBLIC SCHOOLS
PRELIMINARY ENGINEERING PHASE

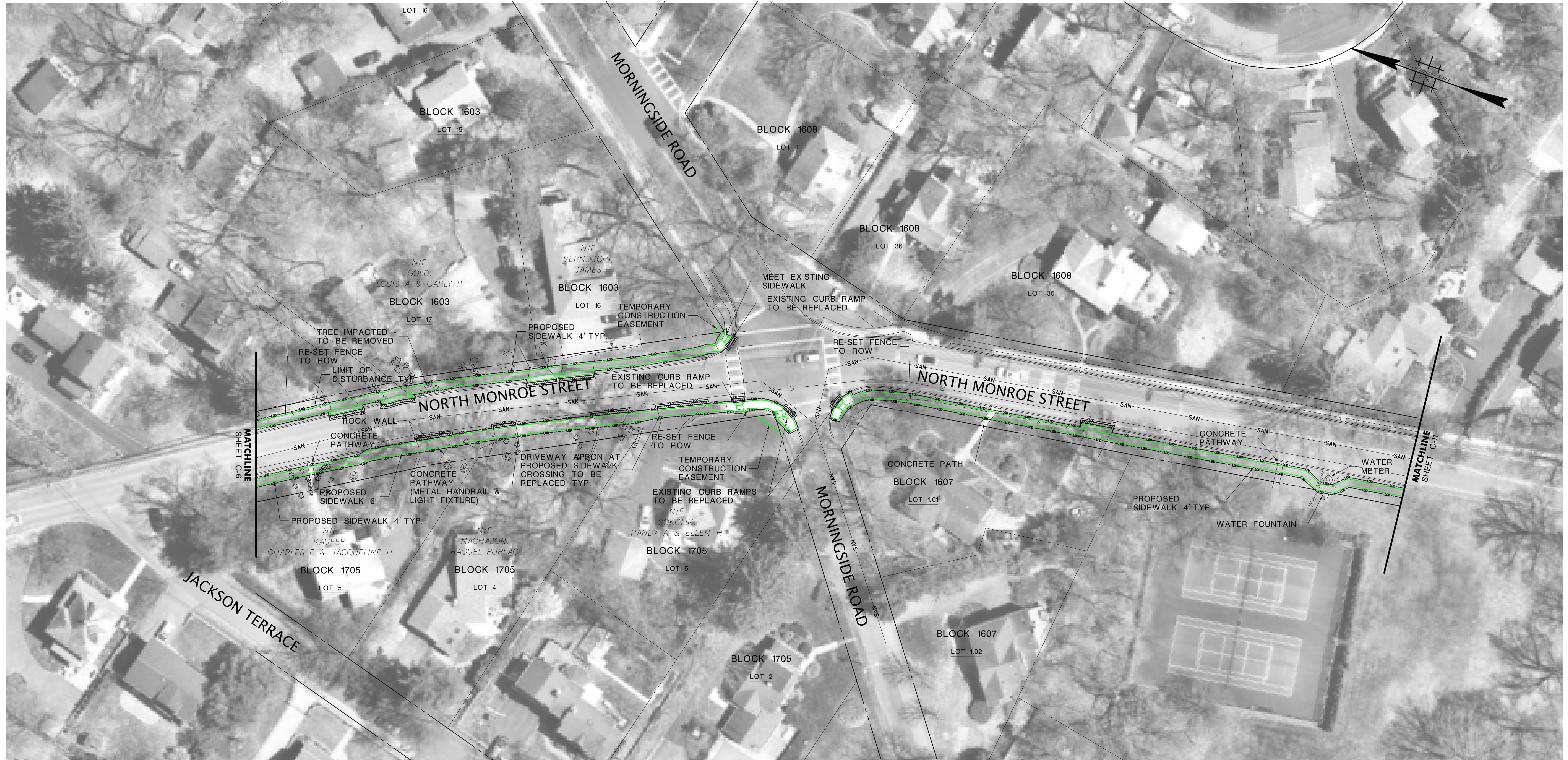
NVS, INC.
CERTIFICATION OF AUTHORIZATION NO. 24GA27930509

10
23

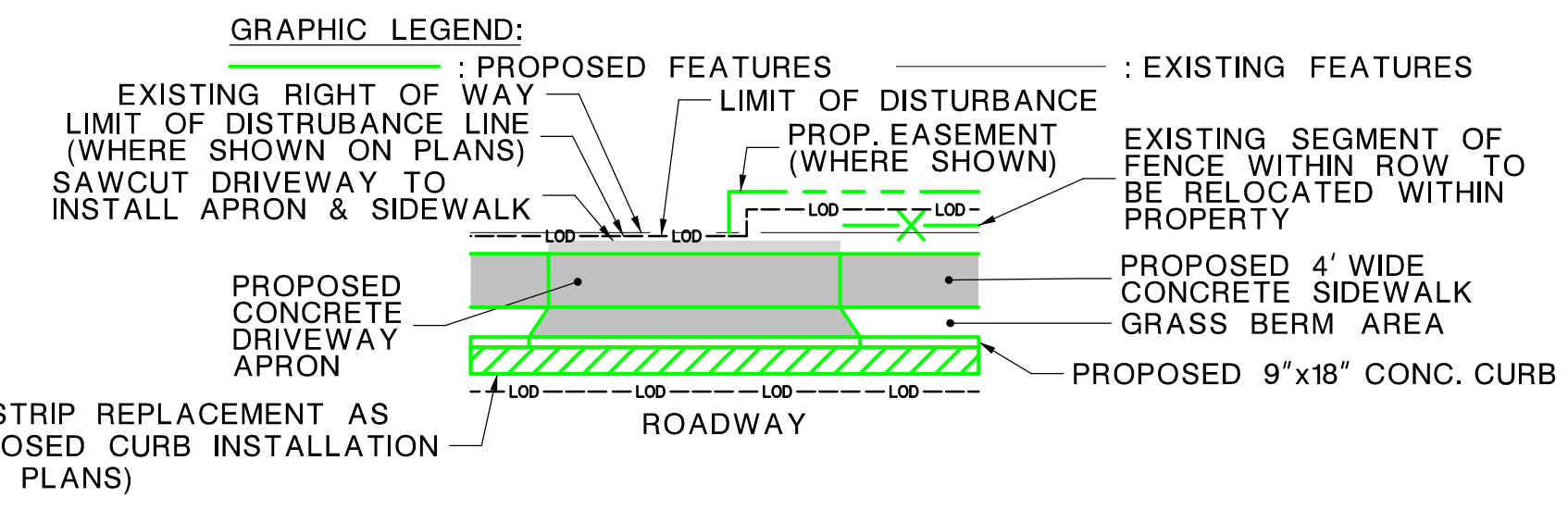
FILE: \\nvd21.nvs.com\Users\Project\28620-00000000-00 - Ridgewood SRTS\Technical\01-CADD\Construction\C-06.dgn

VILLAGE OF RIDGEWOOD

COUNTY OF BERGEN



- GENERAL NOTES:**
- SOURCE OF MAPPING:**
 - NV5 SURVEY
 - SELECT NEARMAP AERIAL IMAGERY
 - NJ OFFICE OF INFORMATION TECHNOLOGY (NJOIT), OFFICE OF GEOGRAPHIC INFORMATION SYSTEMS (OGIS) (2015)
 - SOURCE OF TAX PARCEL INFORMATION:**
 - NJGIN WEBSITE (BOUNDARIES APPROXIMATE)
 - BOROUGH OF RIDGEWOOD TAX MAPS
 - SOURCE OF UTILITY INFORMATION:**
 - UTILITY VERIFICATION PROCESS



PROGRESS PRINT
08-12-2021

REVISION	BY	C'K'D	DATE

NEW JERSEY DEPARTMENT OF TRANSPORTATION

CONSTRUCTION PLANS

VILLAGE OF RIDGEWOOD
SAFE ROUTES TO SCHOOL DESIGN ASSISTANCE
RIDGEWOOD SRTS 2016 - PHASE 1 - RIDGEWOOD PUBLIC SCHOOLS
PRELIMINARY ENGINEERING PHASE

NVS, INC.
CERTIFICATION OF AUTHORIZATION NO. 24GA27930500

11
23

FILE: \\vds21.nvs.com\Users\Project\2020\00000000 - Ridgewood - SRTS\Technical\01-CADD\Construction\C-07.dgn

VILLAGE OF RIDGEWOOD

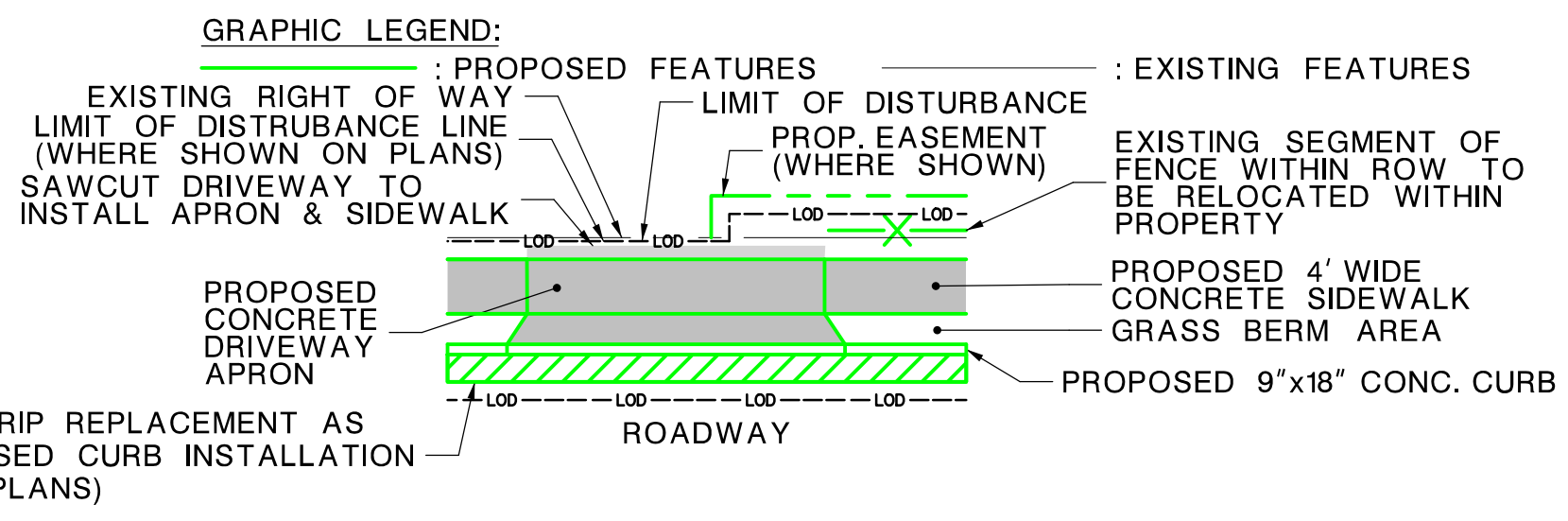
COUNTY OF BERGEN



MATCHLINE SHEET C-11

MATCHLINE SHEET C-9

- GENERAL NOTES:**
- SOURCE OF MAPPING:**
 - NV5 SURVEY
 - SELECT NEARMAP AERIAL IMAGERY
 - NJ OFFICE OF INFORMATION TECHNOLOGY (NJOIT), OFFICE OF GEOGRAPHIC INFORMATION SYSTEMS (OGIS) (2015)
 - SOURCE OF TAX PARCEL INFORMATION:**
 - NJGIN WEBSITE (BOUNDARIES APPROXIMATE)
 - BOROUGH OF RIDGEWOOD TAX MAPS
 - SOURCE OF UTILITY INFORMATION:**
 - UTILITY VERIFICATION PROCESS



PROGRESS PRINT
08-12-2021

NEW JERSEY DEPARTMENT OF TRANSPORTATION

CONSTRUCTION PLANS

VILLAGE OF RIDGEWOOD
SAFE ROUTES TO SCHOOL DESIGN ASSISTANCE
RIDGEWOOD SRTS 2016 - PHASE 1 - RIDGEWOOD PUBLIC SCHOOLS
PRELIMINARY ENGINEERING PHASE

NVS, INC.
CERTIFICATION OF AUTHORIZATION NO. 24GA27930500
DENICE DACUNHA
NEW JERSEY PROFESSIONAL ENGINEER LICENSE NO. 24GE04043500

REVISION	BY	C'K'D	DATE

C-8
C-18

12
23

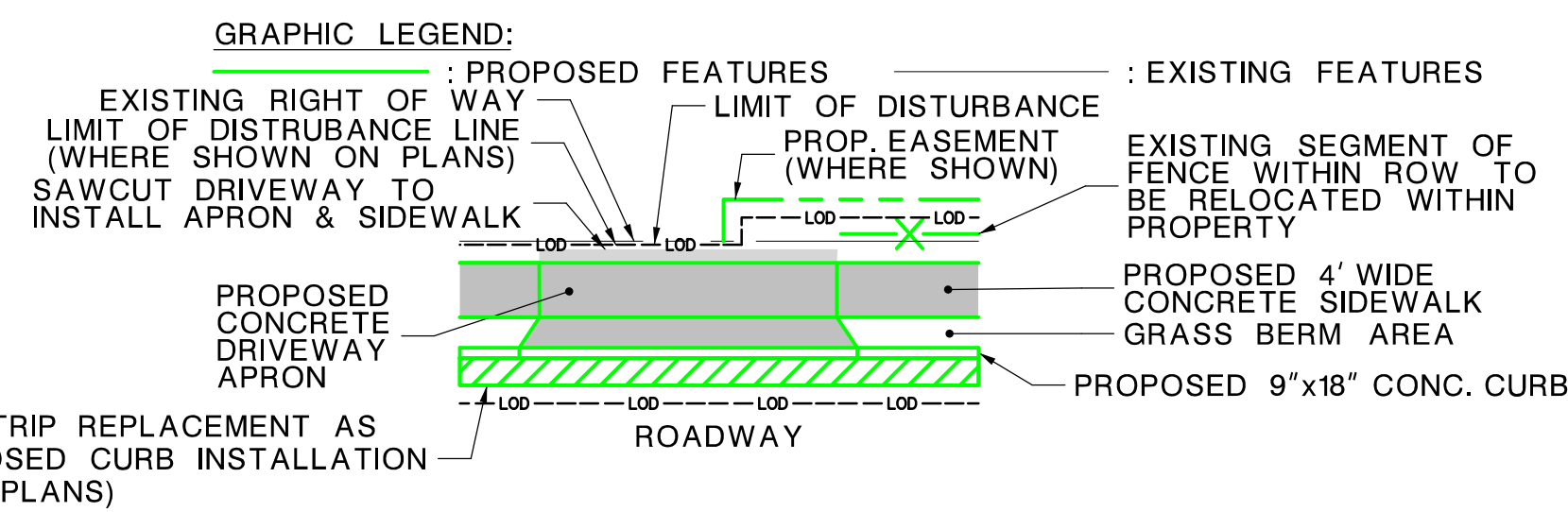
FILE: F:\Project\2850-00000000 - Ridgewood SRTS\Technical\CADD\Construction\C-8.dgn

VILLAGE OF RIDGEWOOD

COUNTY OF BERGEN



- GENERAL NOTES:**
- SOURCE OF MAPPING:
 - NV5 SURVEY
 - SELECT NEARMAP AERIAL IMAGERY
 - NJ OFFICE OF INFORMATION TECHNOLOGY (NJOIT), OFFICE OF GEOGRAPHIC INFORMATION SYSTEMS (OGIS) (2015)
 - SOURCE OF TAX PARCEL INFORMATION:
 - NJGIN WEBSITE (BOUNDARIES APPROXIMATE)
 - BOROUGH OF RIDGEWOOD TAX MAPS
 - SOURCE OF UTILITY INFORMATION:
 - UTILITY VERIFICATION PROCESS



PROGRESS PRINT
08-12-2021

REVISION	BY	C'K'D	DATE

NEW JERSEY DEPARTMENT OF TRANSPORTATION

CONSTRUCTION PLANS

VILLAGE OF RIDGEWOOD
SAFE ROUTES TO SCHOOL DESIGN ASSISTANCE
RIDGEWOOD SRTS 2016 - PHASE 1 - RIDGEWOOD PUBLIC SCHOOLS
PRELIMINARY ENGINEERING PHASE

NVS, INC.
CERTIFICATION OF AUTHORIZATION NO. 24GA27930500

13
23

FILE: \\nvd21nvs.com\Users\Project\28620-00000000-00 - Ridgewood - SRTS\Technical\01-CADD\Construction\C-29.dgn

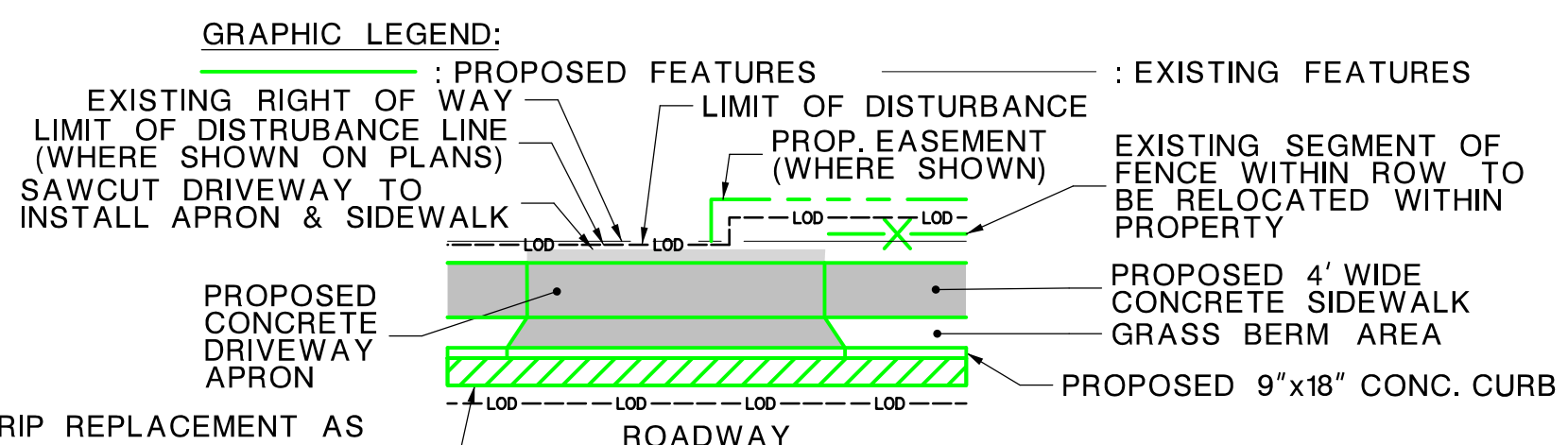
VILLAGE OF RIDGEWOOD



COUNTY OF BERGEN



- GENERAL NOTES:**
- SOURCE OF MAPPING:**
 - NV5 SURVEY
 - SELECT NEARMAP AERIAL IMAGERY
 - NJ OFFICE OF INFORMATION TECHNOLOGY (NJGIT), OFFICE OF GEOGRAPHIC INFORMATION SYSTEMS (OGIS) (2015)
 - SOURCE OF TAX PARCEL INFORMATION:**
 - NJGIN WEBSITE (BOUNDARIES APPROXIMATE)
 - BOROUGH OF RIDGEWOOD TAX MAPS
 - SOURCE OF UTILITY INFORMATION:**
 - UTILITY VERIFICATION PROCESS



1'-6" ASPHALT STRIP REPLACEMENT AS PART OF PROPOSED CURB INSTALLATION (AS NOTED ON PLANS)

PROGRESS PRINT
08-12-2021

NEW JERSEY DEPARTMENT OF TRANSPORTATION

CONSTRUCTION PLANS

VILLAGE OF RIDGEWOOD
SAFE ROUTES TO SCHOOL DESIGN ASSISTANCE
RIDGEWOOD SRTS 2016 - PHASE 1 - RIDGEWOOD PUBLIC SCHOOLS
PRELIMINARY ENGINEERING PHASE

NVS, INC.
CERTIFICATION OF AUTHORIZATION NO. 24GA27930500

REVISION	BY	C'K'D	DATE

C-10
C-18

FILE: \\nvd21.nvs.com\env\Project\29820-00000000-00 - Ridgewood SRTS\Technical\01-CADD\Construction\C-10.dwg

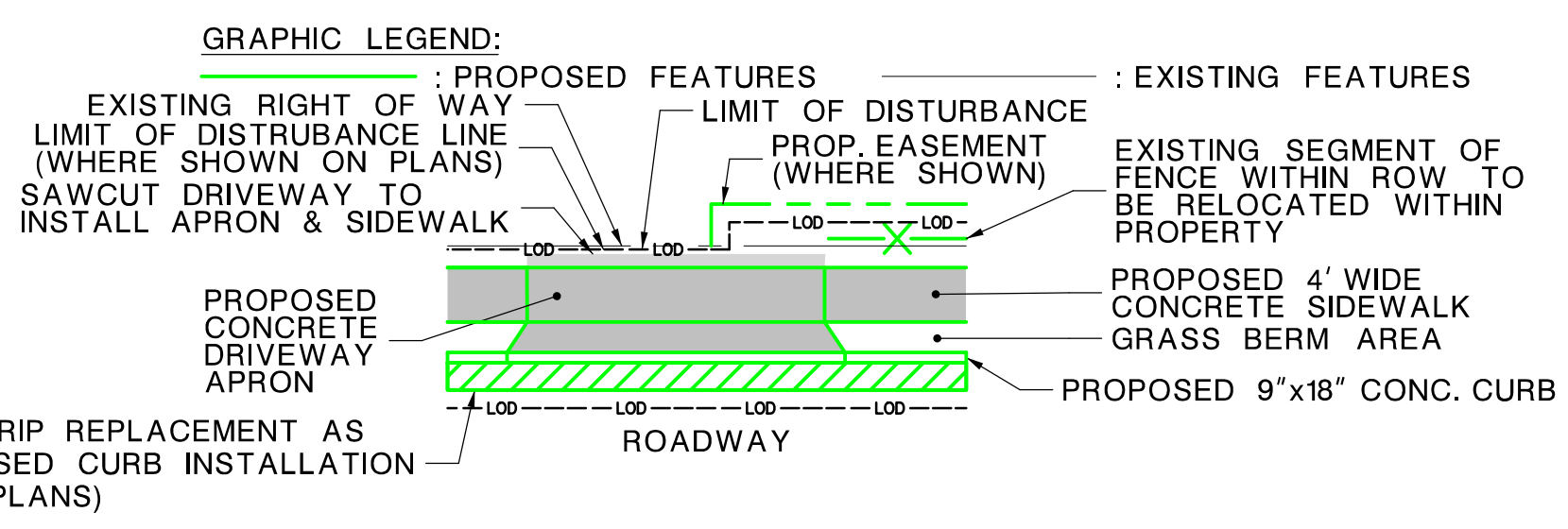
VILLAGE OF RIDGEWOOD



COUNTY OF BERGEN



- GENERAL NOTES:**
- SOURCE OF MAPPING:
 - NV5 SURVEY
 - SELECT NEARMAP AERIAL IMAGERY
 - NJ OFFICE OF INFORMATION TECHNOLOGY (NJOT), OFFICE OF GEOGRAPHIC INFORMATION SYSTEMS (OGIS) (2015)
 - SOURCE OF TAX PARCEL INFORMATION:
 - NJGIN WEBSITE (BOUNDARIES APPROXIMATE)
 - BOROUGH OF RIDGEWOOD TAX MAPS
 - SOURCE OF UTILITY INFORMATION:
 - UTILITY VERIFICATION PROCESS



PROGRESS PRINT
08-12-2021

REVISION	BY	C'K'D	DATE

NEW JERSEY DEPARTMENT OF TRANSPORTATION

CONSTRUCTION PLANS

VILLAGE OF RIDGEWOOD
SAFE ROUTES TO SCHOOL DESIGN ASSISTANCE
RIDGEWOOD SRTS 2016 - PHASE 1 - RIDGEWOOD PUBLIC SCHOOLS
PRELIMINARY ENGINEERING PHASE

NVS, INC.
CERTIFICATION OF AUTHORIZATION NO. 24GA27930500

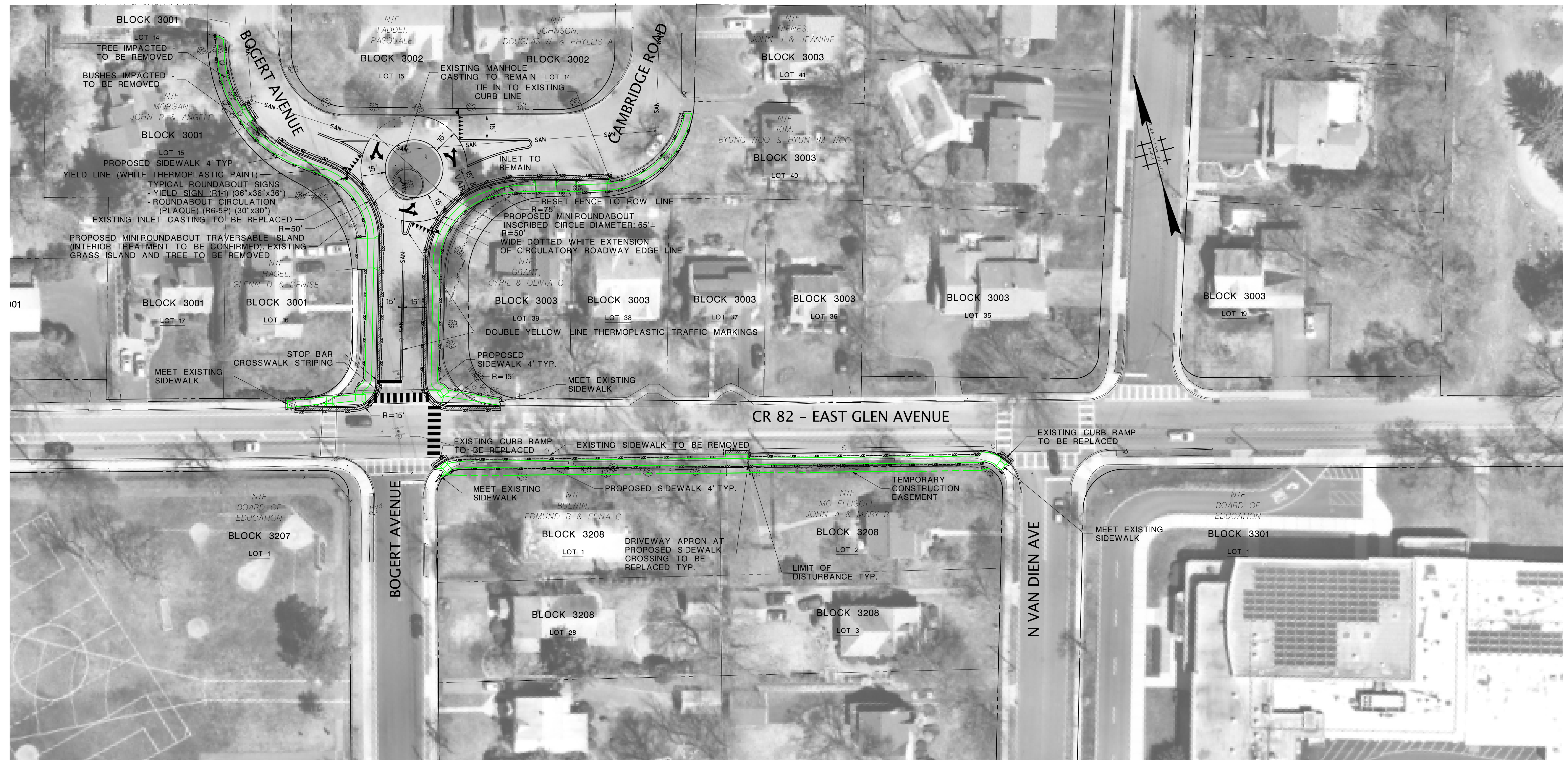
15
23

FILE: \\nvd21.nvs.com\Users\Project\29820-00000000 - Ridgewood SRTS\Technical\01-CADD\Construction\C-11.dwg

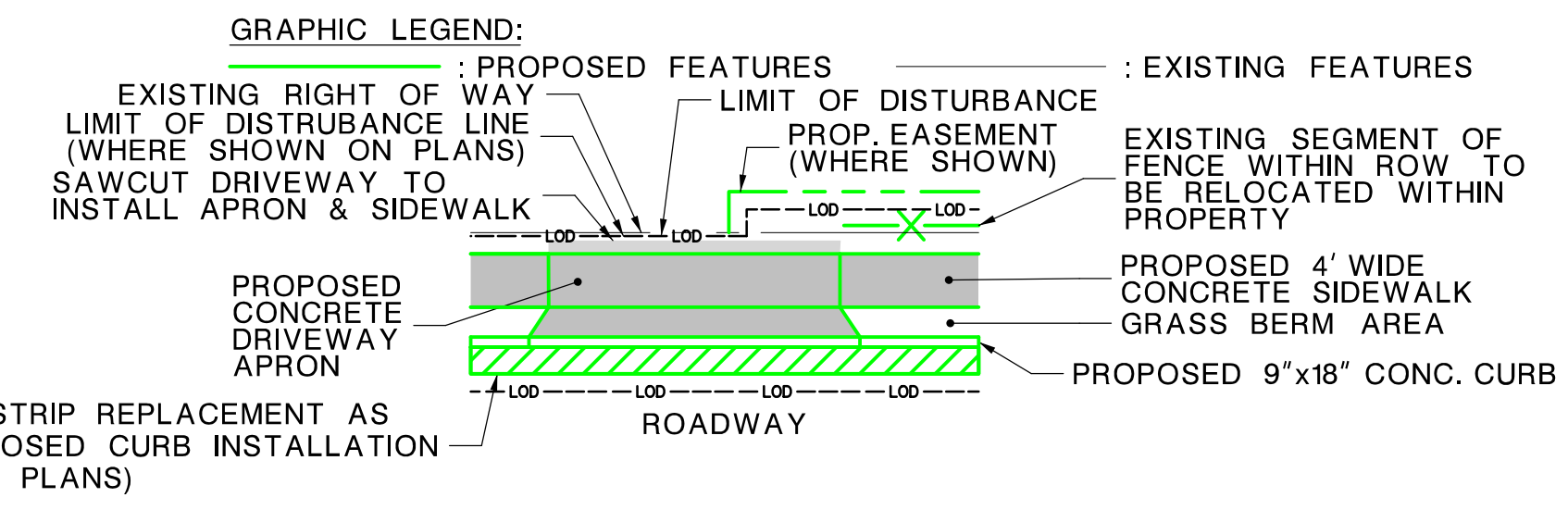
VILLAGE OF RIDGEWOOD



COUNTY OF BERGEN



- GENERAL NOTES:**
- SOURCE OF MAPPING:
 - NV5 SURVEY
 - SELECT NEARMAP AERIAL IMAGERY
 - NJ OFFICE OF INFORMATION TECHNOLOGY (NJGIT), OFFICE OF GEOGRAPHIC INFORMATION SYSTEMS (OGIS) (2015)
 - SOURCE OF TAX PARCEL INFORMATION:
 - NJGIN WEBSITE (BOUNDARIES APPROXIMATE)
 - BOROUGH OF RIDGEWOOD TAX MAPS
 - SOURCE OF UTILITY INFORMATION:
 - UTILITY VERIFICATION PROCESS



1'-6" ASPHALT STRIP REPLACEMENT AS PART OF PROPOSED CURB INSTALLATION (AS NOTED ON PLANS)

PROGRESS PRINT
08-12-2021

REVISION	BY	C'K'D	DATE

NEW JERSEY DEPARTMENT OF TRANSPORTATION

CONSTRUCTION PLANS

VILLAGE OF RIDGEWOOD
SAFE ROUTES TO SCHOOL DESIGN ASSISTANCE
RIDGEWOOD SRTS 2016 - PHASE 1 - RIDGEWOOD PUBLIC SCHOOLS
PRELIMINARY ENGINEERING PHASE

NVS, INC.
CERTIFICATION OF AUTHORIZATION NO. 24GA27930500

16
23

FILE: \\nvd21.nvs.com\Users\Project\2020\00000000 - Ridgewood - SRTS\Technical\01-CADD\Construction\C-12.dwg

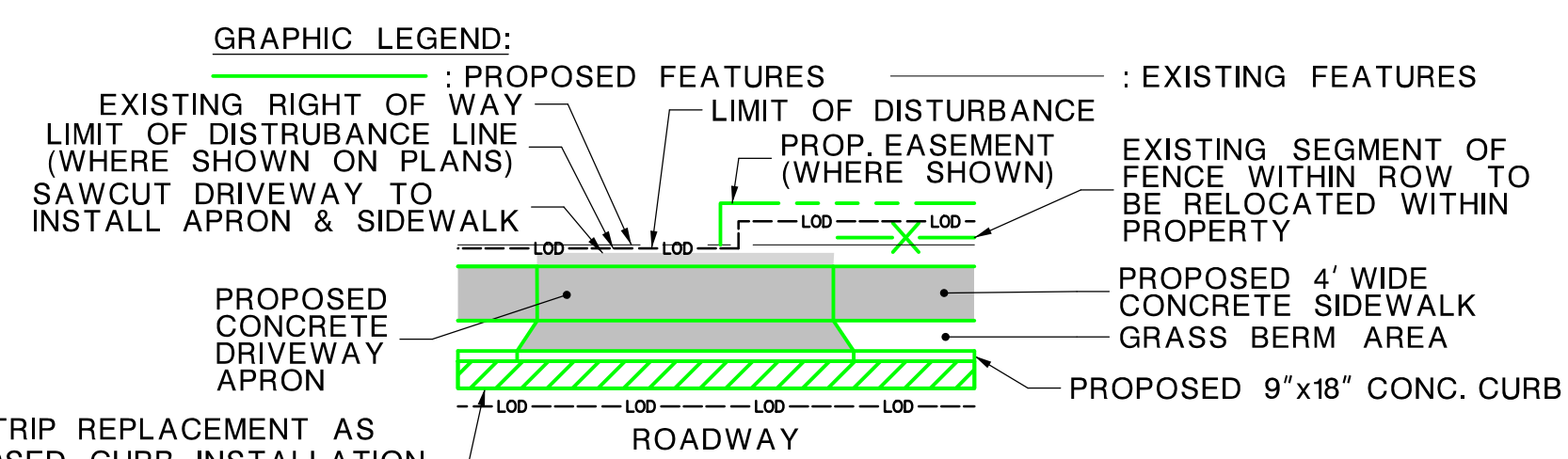
VILLAGE OF RIDGEWOOD



COUNTY OF BERGEN



- GENERAL NOTES:**
- SOURCE OF MAPPING:**
 - NV5 SURVEY
 - SELECT NEARMAP AERIAL IMAGERY
 - NJ OFFICE OF INFORMATION TECHNOLOGY (NJGIT), OFFICE OF GEOGRAPHIC INFORMATION SYSTEMS (OGIS) (2015)
 - SOURCE OF TAX PARCEL INFORMATION:**
 - NJGIN WEBSITE (BOUNDARIES APPROXIMATE)
 - BOROUGH OF RIDGEWOOD TAX MAPS
 - SOURCE OF UTILITY INFORMATION:**
 - UTILITY VERIFICATION PROCESS



1'-6" ASPHALT STRIP REPLACEMENT AS PART OF PROPOSED CURB INSTALLATION (AS NOTED ON PLANS)

PROGRESS PRINT
08-12-2021

REVISION	BY	C'D	DATE

NEW JERSEY DEPARTMENT OF TRANSPORTATION

CONSTRUCTION PLANS

VILLAGE OF RIDGEWOOD
SAFE ROUTES TO SCHOOL DESIGN ASSISTANCE
RIDGEWOOD SRTS 2016 - PHASE 1 - RIDGEWOOD PUBLIC SCHOOLS
PRELIMINARY ENGINEERING PHASE

NVS, INC.
CERTIFICATION OF AUTHORIZATION NO. 24GA27930500

C-13
C-18

FILE: \\nvd21.nvs.com\Users\Project\29820-00000000-00 - Ridgewood SRTS\Technical\01-CADD\Construction\C-18.dwg

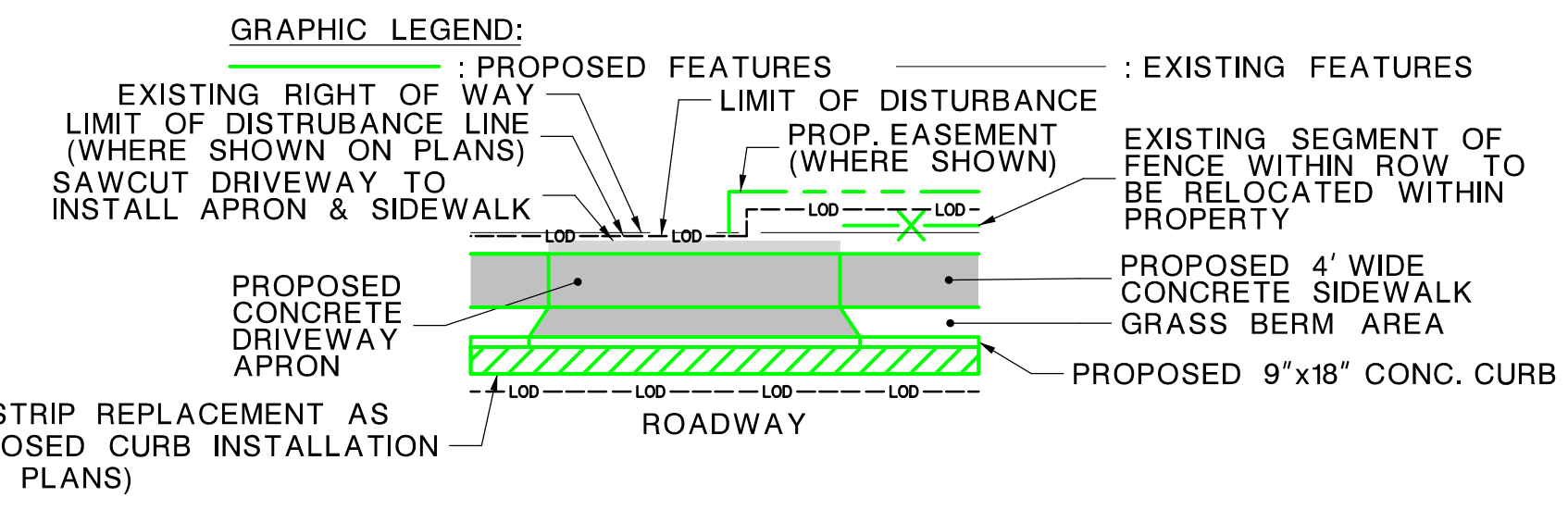
VILLAGE OF RIDGEWOOD



COUNTY OF BERGEN



- GENERAL NOTES:**
- SOURCE OF MAPPING:
 - NV5 SURVEY
 - SELECT NEARMAP AERIAL IMAGERY
 - NJ OFFICE OF INFORMATION TECHNOLOGY (NJOIT), OFFICE OF GEOGRAPHIC INFORMATION SYSTEMS (OGIS) (2015)
 - SOURCE OF TAX PARCEL INFORMATION:
 - NJGIN WEBSITE (BOUNDARIES APPROXIMATE)
 - BOROUGH OF RIDGEWOOD TAX MAPS
 - SOURCE OF UTILITY INFORMATION:
 - UTILITY VERIFICATION PROCESS



PROGRESS PRINT
08-12-2021

NEW JERSEY DEPARTMENT OF TRANSPORTATION

CONSTRUCTION PLANS

VILLAGE OF RIDGEWOOD
SAFE ROUTES TO SCHOOL DESIGN ASSISTANCE
RIDGEWOOD SRTS 2016 - PHASE 1 - RIDGEWOOD PUBLIC SCHOOLS
PRELIMINARY ENGINEERING PHASE

NV5, INC.
CERTIFICATION OF AUTHORIZATION NO. 24GA27930500

REVISION	BY	C'K'D	DATE

18
23

FILE: \\vd022rvc.com\env\Project\29800-00000000-00 - Ridgewood SRTS\Technical\01-CADD\Construction\C-14.dwg

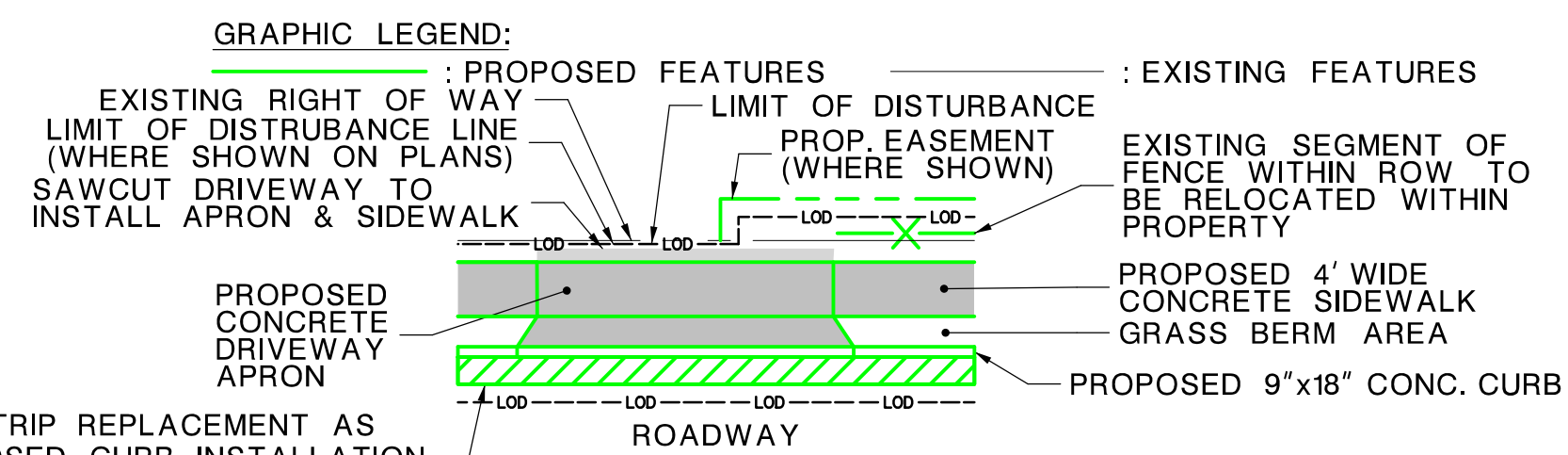
VILLAGE OF RIDGEWOOD



COUNTY OF BERGEN



- GENERAL NOTES:**
- SOURCE OF MAPPING:**
 - NV5 SURVEY
 - SELECT NEARMAP AERIAL IMAGERY
 - NJ OFFICE OF INFORMATION TECHNOLOGY (NJOIT), OFFICE OF GEOGRAPHIC INFORMATION SYSTEMS (OGIS) (2015)
 - SOURCE OF TAX PARCEL INFORMATION:**
 - NJGIN WEBSITE (BOUNDARIES APPROXIMATE)
 - BOROUGH OF RIDGEWOOD TAX MAPS
 - SOURCE OF UTILITY INFORMATION:**
 - UTILITY VERIFICATION PROCESS



1'-6" ASPHALT STRIP REPLACEMENT AS PART OF PROPOSED CURB INSTALLATION (AS NOTED ON PLANS)

PROGRESS PRINT
08-12-2021

REVISION	BY	C'K'D	DATE

NEW JERSEY DEPARTMENT OF TRANSPORTATION

CONSTRUCTION PLANS

VILLAGE OF RIDGEWOOD
SAFE ROUTES TO SCHOOL DESIGN ASSISTANCE
RIDGEWOOD SRTS 2016 - PHASE 1 - RIDGEWOOD PUBLIC SCHOOLS
PRELIMINARY ENGINEERING PHASE

NVS, INC.
CERTIFICATION OF AUTHORIZATION NO. 24GA27930500

19
23

FILE: \\nvd21nvs.com\env\Project\29820-00000000 - Ridgewood SRTS\Technical\01-CADD\Construction\C-18.dwg

VILLAGE OF RIDGEWOOD

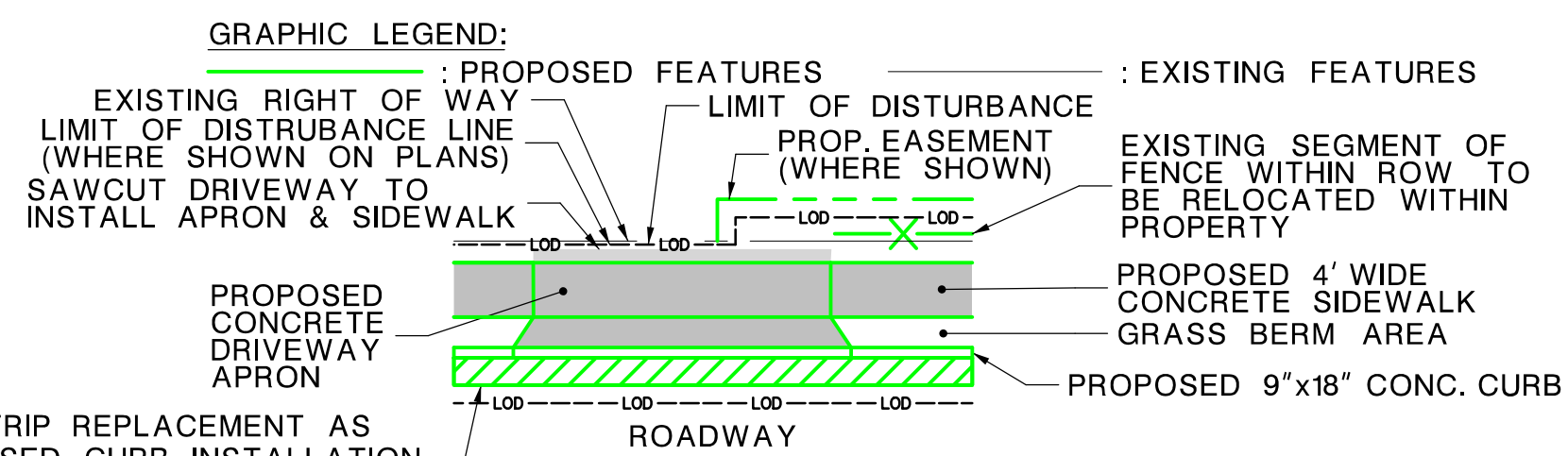


COUNTY OF BERGEN



GENERAL NOTES:

- SOURCE OF MAPPING:
 - NV5 SURVEY
 - SELECT NEARMAP AERIAL IMAGERY
 - NJ OFFICE OF INFORMATION TECHNOLOGY (NJOIT), OFFICE OF GEOGRAPHIC INFORMATION SYSTEMS (OGIS) (2015)
- SOURCE OF TAX PARCEL INFORMATION:
 - NJGIN WEBSITE (BOUNDARIES APPROXIMATE)
 - BOROUGH OF RIDGEWOOD TAX MAPS
- SOURCE OF UTILITY INFORMATION:
 - UTILITY VERIFICATION PROCESS



1'-6" ASPHALT STRIP REPLACEMENT AS PART OF PROPOSED CURB INSTALLATION (AS NOTED ON PLANS)

PROGRESS PRINT
08-12-2021

REVISION	BY	C'K'D	DATE

NEW JERSEY DEPARTMENT OF TRANSPORTATION

CONSTRUCTION PLANS

VILLAGE OF RIDGEWOOD
SAFE ROUTES TO SCHOOL DESIGN ASSISTANCE
RIDGEWOOD SRTS 2016 - PHASE 1 - RIDGEWOOD PUBLIC SCHOOLS
PRELIMINARY ENGINEERING PHASE

NVS, INC.
CERTIFICATION OF AUTHORIZATION NO. 24GA27930500

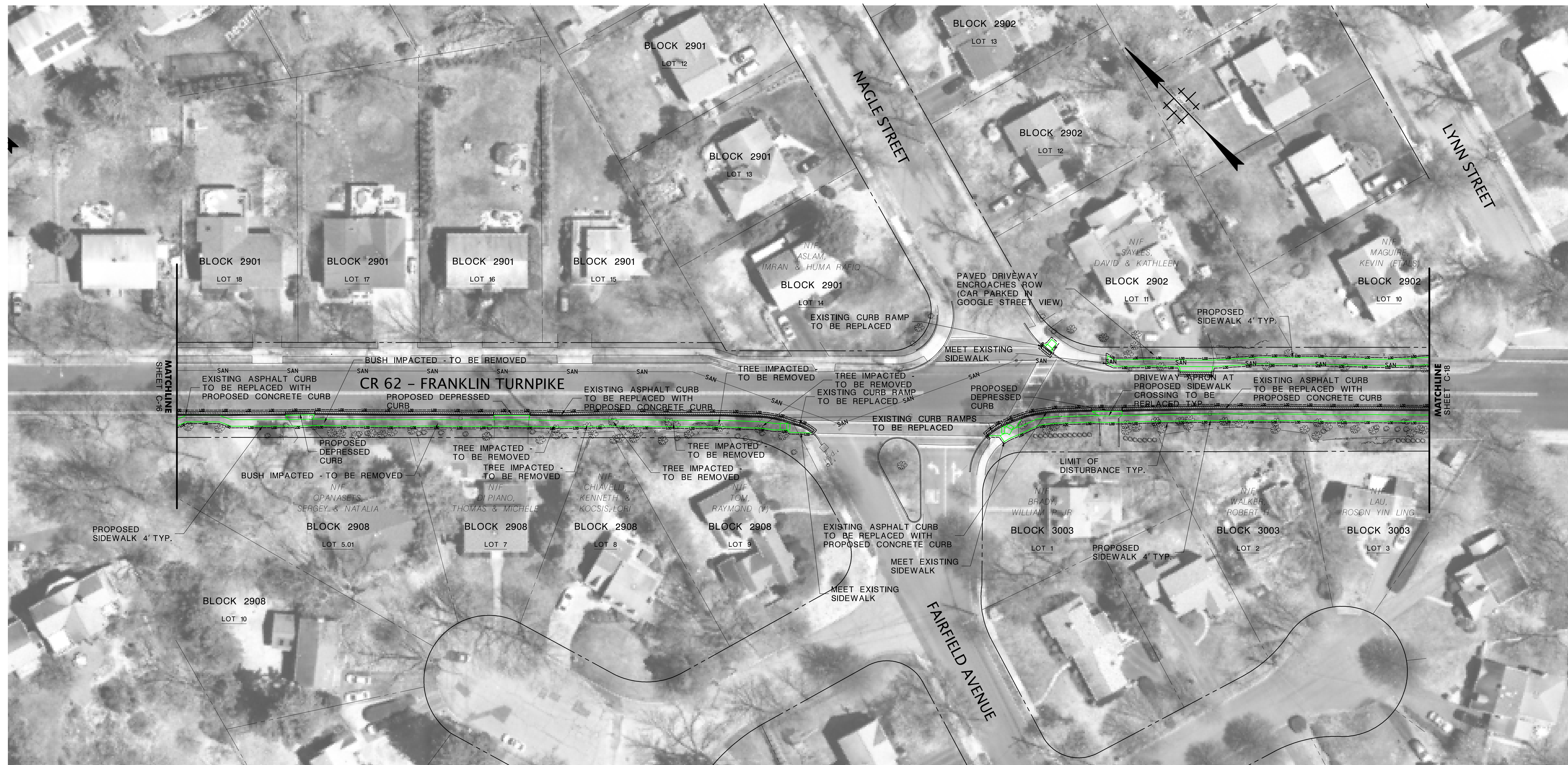
20
23

FILE: \\vds21.nvs.com\Users\Project\28620-00000000-00 - Ridgewood - SRTS\Technical\01-CADD\Construction\C-16.dwg

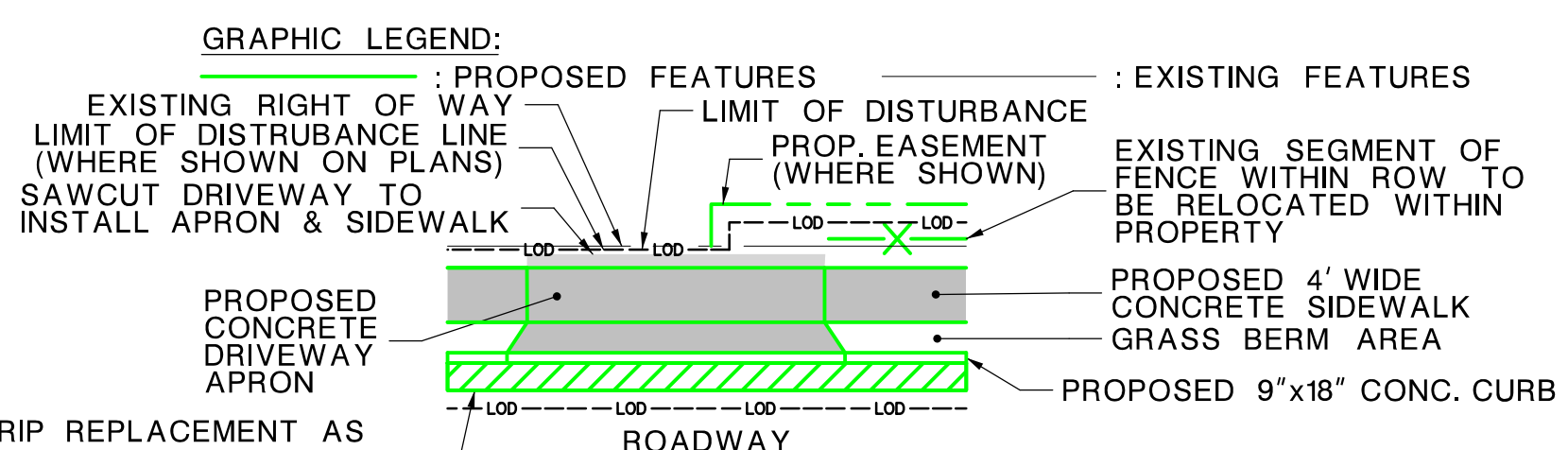
VILLAGE OF RIDGEWOOD



COUNTY OF BERGEN



- GENERAL NOTES:**
- SOURCE OF MAPPING:**
 - NVS SURVEY
 - SELECT NEARMAP AERIAL IMAGERY
 - NJ OFFICE OF INFORMATION TECHNOLOGY (NJOTI), OFFICE OF GEOGRAPHIC INFORMATION SYSTEMS (OGIS) (2015)
 - SOURCE OF TAX PARCEL INFORMATION:**
 - NJGIN WEBSITE (BOUNDARIES APPROXIMATE)
 - BOROUGH OF RIDGEWOOD TAX MAPS
 - SOURCE OF UTILITY INFORMATION:**
 - UTILITY VERIFICATION PROCESS



**PROGRESS PRINT
08-12-2021**

REVISION	BY	C'K'D	DATE

NEW JERSEY DEPARTMENT OF TRANSPORTATION

CONSTRUCTION PLANS

VILLAGE OF RIDGEWOOD
SAFE ROUTES TO SCHOOL DESIGN ASSISTANCE
RIDGEWOOD SRTS 2016 - PHASE 1- RIDGEWOOD PUBLIC SCHOOLS
PRELIMINARY ENGINEERING PHASE

NVS, INC.
CERTIFICATION OF AUTHORIZATION NO. 24GA27930500

21
23

FILE: F:\Project\28620-00000000 - Ridgewood SRTS Technical\01-CADD\Construction\C-17 - Copy.dwg

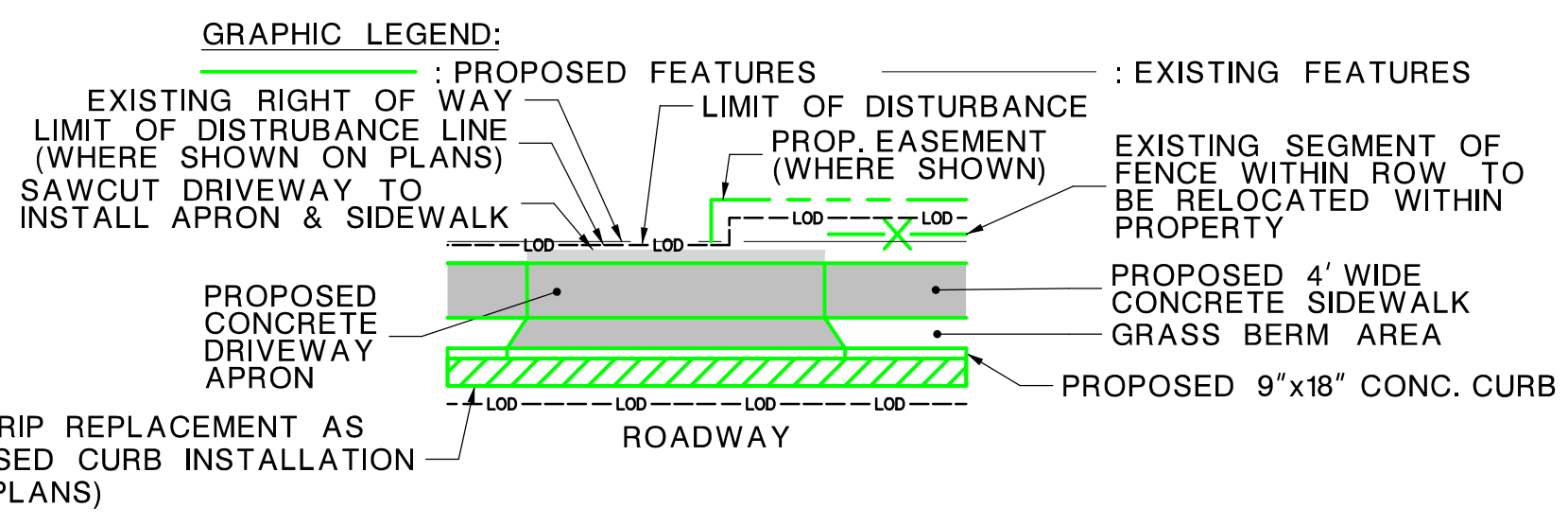
VILLAGE OF RIDGEWOOD



COUNTY OF BERGEN



- GENERAL NOTES:**
- SOURCE OF MAPPING:**
 - NVS SURVEY
 - SELECT NEARMAP AERIAL IMAGERY
 - NJ OFFICE OF INFORMATION TECHNOLOGY (NJOIT), OFFICE OF GEOGRAPHIC INFORMATION SYSTEMS (OGIS) (2015)
 - SOURCE OF TAX PARCEL INFORMATION:**
 - NJGIN WEBSITE (BOUNDARIES APPROXIMATE)
 - BOROUGH OF RIDGEWOOD TAX MAPS
 - SOURCE OF UTILITY INFORMATION:**
 - UTILITY VERIFICATION PROCESS



PROGRESS PRINT
08-12-2021

REVISION	BY	C'D	DATE

NEW JERSEY DEPARTMENT OF TRANSPORTATION

CONSTRUCTION PLANS



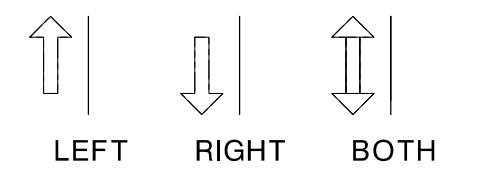
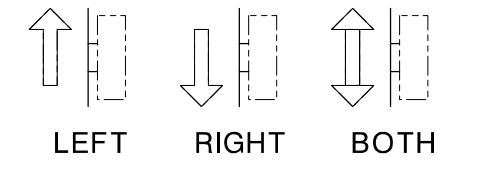

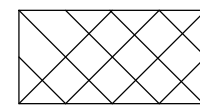
VILLAGE OF RIDGEWOOD
SAFE ROUTES TO SCHOOL DESIGN ASSISTANCE
RIDGEWOOD SRTS 2016 - PHASE 1 - RIDGEWOOD PUBLIC SCHOOLS
PRELIMINARY ENGINEERING PHASE

NVS, INC.
CERTIFICATION OF AUTHORIZATION NO. 24GA27930500

22
23

FILE: \\nvd21.nvs.com\Users\Project\29820-00000000 - Ridgewood SRTS\Technical\01-CADD\Construction\C-18.dwg

LEGEND

-  BREAKAWAY BARRICADES
-  BREAKAWAY BARRICADES WITH SIGN
-  CONSTRUCTION SIGNS
-  DRUMS
-  CONE
-  CONSTRUCTION BARRIER CURB (TYPE SPECIFIED)
-  DIRECTION OF TRAFFIC FLOW
-  TRAFFIC DIRECTOR, FLAGGER
-  TRAILER MOUNTED MOUNTED ARROW BOARD SHOWING CAUTION MODE
-  ILLUMINATED FLASHING ARROW MOUNTED ON TOWING VEHICLE SHOWING ARROW PATTERN (LEFT, RIGHT, BOTH)
-  TRAFFIC CONTROL TRUCK WITH MOUNTED CRASH CUSHION AND ARROW BOARD SHOWING CAUTION MODE
-  TRAFFIC CONTROL TRUCK WITH MOUNTED CRASH CUSHION AND ARROW BOARD SHOWING ARROW PATTERN (LEFT, RIGHT, BOTH)
-  TEMPORARY CRASH CUSHION, INERTIAL BARRIER SYSTEM
-  TEMPORARY CRASH CUSHION, (ALL OTHER APPROVED)
-  BUFFER ZONE
-  WORK AREA
-  PAINT STRIPING TRUCK OR OTHER OPERATING VEHICLE

GENERAL NOTES:

- ADVANCE WARNING SIGNS DISTANCES AND TAPER LENGTHS MAY BE EXTENDED, AT DIRECTION OF THE DEPARTMENT, TO ADJUST FOR REDUCED VISIBILITY DUE TO HORIZONTAL AND VERTICAL CURVATURE OF THE ROADWAY.
- THE APPROXIMATE LOCATIONS OF THE ILLUMINATED FLASHING ARROW BOARDS ARE SHOWN ON THE TRAFFIC CONTROL PLANS. THESE LOCATIONS MAY BE MODIFIED AS APPROVED BY RE TO ADJUST FOR VISIBILITY DUE TO HORIZONTAL OR VERTICAL CURVATURE OF THE ROADWAY OR TO POSITION AT A SAFER LOCATION. ILLUMINATED FLASHING ARROW BOARDS ARE TO BE USED FOR TEMPORARY LANE CLOSINGS AND AT LOCATIONS SHOWN ON THE TRAFFIC CONTROL PLANS.
- PRIOR TO ANY ROAD CONSTRUCTION, TRAFFIC CONTROL SIGNS AND DEVICES ARE TO BE IN PLACE.
- RAMP AND/OR SIDE STREETS ENTERING THE ROADWAY AFTER THE FIRST ADVANCE WARNING SIGN ARE TO BE PROVIDED WITH AT LEAST ONE W20-IF SIGN (ROAD WORK AHEAD) AS A MINIMUM.
- ALL EXISTING ROAD SIGNS, PAVEMENT MARKINGS, AND / OR PLOWABLE PAVEMENT REFLECTORS WHICH CONFLICT WITH THE PROPOSED TRAFFIC CONTROL PLAN ARE TO BE COVERED, REMOVED, OR RELOCATED AS DIRECTED BY THE RE.
- CONFLICTING OR NON-OPERATING SIGNAL INDICATIONS ON EITHER THE EXISTING, TEMPORARY, OR PROPOSED TRAFFIC SIGNAL SYSTEMS ARE TO BE BAGGED OR COVERED.
- MAINTENANCE AND PROTECTION OF TRAFFIC TO BE IN ACCORDANCE WITH THE MANUAL OF UNIFORM TRAFFIC CONTROL DEVICES - PART VI "STANDARDS AND GUIDES FOR TRAFFIC CONTROL FOR STREET AND HIGHWAY CONSTRUCTION, MAINTENANCE, UTILITY, AND INCIDENT MANAGEMENT OPERATIONS", UNLESS OTHERWISE NOTED IN THE PLANS AND SPECIFICATIONS.
- CONSTRUCTION SIGN W99-2 (GIVE US A BRAKE) TO BE LOCATED 200 FEET IN ADVANCE OF PROJECT LIMITS.
- A W1-6 (ARROW) SIGN MOUNTED ON A BREAKAWAY BARRICADE AND CENTERED ON THE CLOSED WIDTH TO BE LOCATED 100 FEET BEYOND EACH INTERSECTION OR MAIN ACCESS POINT WITHIN THE AREA OF A LANE OR SHOULDER CLOSURE.
- CONSTRUCTION SIGNS R11-4 (ROAD CLOSED TO THRU TRAFFIC) TO BE PLACED AT THE INTERSECTING STREETS WHICH ARE CLOSED TO TRAFFIC BECAUSE OF CONSTRUCTION.
- CONSTRUCTION SIGNS W8-9A (SYMBOL FOR UNEVEN PAVEMENT) AND W8-14A (GROOVED PAVEMENT) TO BE USED WHEN SUCH PAVEMENT CONDITIONS EXIST.
- MOVING WORK AREAS IN A LANE CLOSURE REQUIRE A TRAILER MOUNTED ILLUMINATED FLASHING ARROW TO REMAIN AT THE END OF THE TAPER, THE TRAFFIC CONTROL TRUCK WITH MOUNTED CRASH CUSHION THAT IS TO MOVE WITH THE WORK AREAS TO KEEP A 70 FEET MIN. AND 150 FEET MAX. BUFFER IN ADVANCE OF EACH WORK AREA.
- THE CONTRACTOR TO SUBMIT A PLAN FOR THE SAFE ACCESS OF CONSTRUCTION VEHICLES THROUGHOUT THE WORK SITE WHERE SPACE CONSTRAINTS PREVENT THE USE OF LANE CLOSURES. THE PLAN TO BE SUBMITTED TO THE RE AS SPECIFIED IN THE SPECIFICATIONS.
- BACKFILL ALL EXCAVATED AREAS WITHIN OR ADJACENT TO THE ROADWAY AND PLACE ON AT LEAST 6H:1V SLOPE BEFORE THE END OF EACH WORK DAY. OTHER EXCAVATED AREA WITHIN THE CLEAR ZONE ARE TO BE BACKFILLED.
- WHERE REQUIRED, THE CONTRACTOR IS TO MAKE PROVISIONS FOR MAINTAINING PEDESTRIAN CROSSING LOCATIONS AND TYPE AS DIRECTED BY THE RE.
- BITUMINOUS CONCRETE PLACED DURING THE VARIOUS CONSTRUCTION STAGES TO BE TRANSITIONED ON A MINIMUM 20H:1V SLOPE TO MEET THE ADJACENT EXISTING GRADE AT THE LONGITUDINAL AND TRANSVERSE LIMITS OF THE STAGE CONSTRUCTION AREAS UNLESS OTHERWISE NOTED ON THE STAGE CONSTRUCTION PLANS.
- THE PLACEMENT AND / OR RELOCATION OF CONSTRUCTION BARRIER CURB TO BE DONE DURING ALLOWABLE LANE CLOSURE HOURS.
- CONSTRUCTION ZONE SPEED LIMIT WILL BE DETERMINED BY THE BUREAU OF TRAFFIC ENGINEERING, REGIONAL TRAFFIC ENGINEER - WORK ZONE, AT THE TIME OF OR DURING CONSTRUCTION, AS REQUESTED BY THE RE.
- THE SPEED LIMIT, R2-1 (BLACK ON WHITE) WITH ADDED WORK ZONE PLATE (BLACK ON ORANGE) SIGNS TO BE LOCATED THROUGH WORK AREAS AS DIRECTED BY THE BUREAU OF TRAFFIC ENGINEERING, REGIONAL TRAFFIC ENGINEER - WORK ZONE.
- THE REDUCED SPEED AHEAD SIGN, W3-5(S) (BLACK ON ORANGE) TO BE LOCATED IN ADVANCE OF SPEED LIMIT R2-1 SIGNS WHICH REDUCE THE NORMAL POSTED SPEED LIMIT THROUGH THE CONSTRUCTION ZONE.
- TRAFFIC FINES DOUBLED IN WORK AREA R(NJ)5-17(S), 4 FEET BY 2.5 FEET SIGN TO BE LOCATED 500 FEET AFTER THE FIRST ADVANCE WARNING SIGN, (W20 SERIES) AT EACH WORK AREA LOCATED WITHIN URBAN AREAS. THIS SIGN TO ALSO BE USED ON PROJECTS REQUIRING MOVING OPERATIONS IN WHICH CASE THE SIGN IS TO BE MOUNTED ON A SLOW MOVING CONSTRUCTION VEHICLE.
- DO NOT CONSTRUCT THE FINAL HMA SURFACE PAVEMENT UNTIL THE FINAL STAGE OF THE PROJECT UNLESS OTHERWISE DIRECTED BY THE RE OR INDICATED ON THE PLANS. SET MANHOLES AND INLETS TO FINISHED GRADE AND CONSTRUCT TEMPORARY PAVEMENT RAMPS AROUND THEM WITH A MINIMUM 20H:1V SLOPE IN ALL DIRECTIONS USING HOT MIX ASPHALT PAVEMENT. THIS TEMPORARY MATERIAL WILL BE REMOVED IMMEDIATELY PRIOR TO PLACING THE SURFACE COURSE.
- PLACE TRAFFIC CONTROL DEVICES FOR LANE CLOSURES INCLUDING SIGNS, CONES, BARRICADES, ETC. AS SHOWN ON PLANS. NO SIGNS ARE TO BE PLACED WITHOUT ACTUAL LANE CLOSURES AND REMOVE IMMEDIATELY UPON REMOVAL OF THE CLOSURES.
- CONES MAY BE SUBSTITUTED FOR DRUMS AND INSTALLED UPON THE APPROVAL OF THE RE.
- TRAFFIC IMPACT NOTICES AND CHANGES
 - TERMS:
WHEN THE FOLLOWING TERMS ARE USED, THE INTENT AND MEANING IS AS FOLLOWS:
 - IMPACTS TO NORMAL TRAFFIC FLOW - WORK THAT REQUIRES A PORTION OF THE PAVED ROADWAY BEING BLOCKED OR CLOSED WITH SAFETY DEVICES OR VEHICLES INCLUDING, BUT NOT LIMITED TO, FULL OR PARTIAL LANE CLOSURES, FULL OR PARTIAL RAMP CLOSURES, SHOULDER CLOSURES, MOVING OPERATIONS SUCH AS TRAFFIC STRIPING OR SWEEPING, LANE SHIFTS, OR ALTERNATING TRAFFIC. THIS APPLIES EVEN WHEN DETOURS ARE PROVIDED.
 - TEMPORARY LANE CLOSURES - WORK DESCRIBED UNDER "IMPACTS TO NORMAL TRAFFIC FLOW" WHICH IS ROUTINELY SET UP AND REMOVED ON A DAILY BASIS.
 - PERMANENT LANE CLOSURES - WORK DESCRIBED UNDER "IMPACTS TO NORMAL TRAFFIC FLOW" WHICH REMAINS IN PLACE CONTINUOUSLY FOR 24 HOURS OR MORE.
 - ADVANCE NOTICES
FOR THE INITIAL START OF WORK THAT REQUIRES "IMPACTS TO NORMAL TRAFFIC FLOW", THE CONTRACTOR IS TO NOTIFY THE RE IN WRITING, ON THE ADVANCE FORM TO-103 PROVIDED BY THE DEPARTMENT, OF THE PROPOSED DATE. THE NOTICE IS TO BE SUBMITTED AT LEAST TWENTY-EIGHT CALENDAR DAYS, BUT NOT MORE THAN SIXTY CALENDAR DAYS, BEFORE THE PROPOSED DATE. START OF WORK THAT IMPACTS NORMAL TRAFFIC FLOW WILL NOT BE PERMITTED PRIOR TO THE DATE STATED IN THE NOTICE. THE CONTRACTOR IS TO CONFIRM, IN WRITING TO THE RE, THE PROPOSED DATE SEVEN (AND/OR FOURTEEN) CALENDAR DAYS BEFORE STARTING THE ESTABLISHMENT OF THE TRAFFIC CONTROL MEASURES FOR THE TRAFFIC IMPACT. THE CONTRACTOR IS TO IMMEDIATELY NOTIFY THE RE IF THE PROPOSED ESTABLISHMENT CANNOT BE COMPLETED ON THE PROPOSED DATE.

FOR A "PERMANENT LANE CLOSURE", THE CONTRACTOR IS TO NOTIFY THE RE IN WRITING, ON ADVANCE FORM TO-103, OF THE PROPOSED DATE A NEW TRAFFIC PATTERN WILL BE ESTABLISHED. THE NOTICE IS TO BE SUBMITTED AT LEAST TWENTY-EIGHT CALENDAR DAYS, BUT NOT MORE THAN SIXTY CALENDAR DAYS, IN ADVANCE OF THE PROPOSED DATE. START OF A NEW TRAFFIC PATTERN WILL NOT BE PERMITTED PRIOR TO THE DATE STATED IN THE NOTICE. THE CONTRACTOR IS TO CONFIRM, IN WRITING TO THE RE, THE PROPOSED DATE OF THE NEW TRAFFIC PATTERN SEVEN (AND/OR FOURTEEN) DAYS BEFORE STARTING TRAFFIC CONTROL MEASURES FOR THE ESTABLISHMENT OF THE NEW PATTERN. THE CONTRACTOR IS TO IMMEDIATELY NOTIFY THE RE IF THE PROPOSED ESTABLISHMENT CANNOT BE COMPLETED ON THE PROPOSED DATE.

STARTING THE ESTABLISHMENT OF A NEW PERMANENT TRAFFIC PATTERN IS TO BEGIN NO EARLIER THAN 11:00 PM FRIDAY AND BE COMPLETED AND READY FOR OPERATIONS BY 6:00 PM THE FOLLOWING SUNDAY. THE ESTABLISHMENT IS TO BE COMPLETED IN ACCORDANCE WITH THE LANE CLOSURE HOURS SPECIFIED IN THE CONTRACT.

ADVANCE NOTICES SENT PRIOR TO THE PRE-CONSTRUCTION MEETING ARE TO BE ADDRESSED TO THE CONTACT PERSON AS SPECIFIED IN SUBSECTION 101.04 OF THE SPECIAL PROVISIONS.
 - PROGRESS NOTICES
ALL "IMPACTS TO NORMAL TRAFFIC FLOW" SCHEDULED FOR THE SEVEN DAY PERIOD STARTING ON THE FOLLOWING MONDAY ARE TO BE SUBMITTED TO THE RE BY 9:00 AM OF EACH FRIDAY ON WEEKLY FORM TO-100 PROVIDED BY THE DEPARTMENT.

EACH DAY OF "TEMPORARY LANE CLOSURES" ARE TO BE SUBMITTED TO THE RE BY 9:00 AM THE DAY IN ADVANCE OF THE START OF THOSE OPERATIONS ON DAILY FORM TO-101 PROVIDED BY THE DEPARTMENT.

"TEMPORARY LANE CLOSURES" FOR WEEKENDS ARE TO BE SUBMITTED TO THE RE BY 9:00 AM ON THE IMMEDIATELY PRECEDING FRIDAY ON THE DAILY FORM TO-101 PROVIDED BY THE DEPARTMENT.
 - CHANGES TO THE SCHEDULED CLOSURES
REQUEST FOR A CHANGE TO THE TRAFFIC CONTROL REQUIREMENTS IN THE CONTRACT DOCUMENTS ARE TO BE SUBMITTED IN WRITING TO THE RE AS FOLLOWS:

CHANGES TO THE SCHEDULED HOURS FOR "TEMPORARY LANE CLOSURES" ARE TO BE SUBMITTED TO THE RE AT LEAST EIGHT CALENDAR DAYS IN ADVANCE OF WHEN THE CHANGE IS PROPOSED TO START.

OTHER PROPOSED CHANGES TO "TEMPORARY LANE CLOSURES" AND ALL CHANGES TO "PERMANENT LANE CLOSURES" ARE TO BE SUBMITTED TO THE RE AS SPECIFIED IN THE SPECIFICATIONS.
- WHERE FINAL HMA PAVING IS PERFORMED AND THE LANE IS TO BE RE-OPENED TO TRAFFIC AND THE ITEM TRAFFIC STRIPES IS UNABLE TO BE APPLIED, APPLY THE ITEM TRAFFIC STRIPES, LATEX. ENSURE THAT THE ITEM TRAFFIC STRIPES IS APPLIED WITHIN 14 DAYS.

RECOMMENDED TAPER LENGTH AND SPACING FOR CHANNELIZING TAPERS				RECOMMENDED SPACING ALONG TANGENTS		
REGULATORY APPROACH SPEED OF TRAFFIC MILES / HOUR	MINIMUM TAPER RATIO IN LENGTH PER FOOT OF WIDTH	MINIMUM TAPER LENGTH L - FOR LANE WIDTHS			MAXIMUM DEVICE (B) SPACING ALONG TAPERS IN FEET	MAXIMUM DEVICE (D) SPACING ALONG TANGENTS IN FEET
		10'	11'	12'		
25	10.5:1	105	115	125	25	50
30	15:1	150	165	180	30	60
35	20.5:1	205	225	245	35	70
40	27:1	270	300	325	40	80
45	45:1	450	495	540	45	90
50	50:1	500	550	600	50	100
55	55:1	550	605	660	55	110
60	60:1	600	660	720	60	120
65	65:1	650	715	780	65	130

NOTE:
THE MAXIMUM DEVICE SPACING ALONG CURVES IS DEFINED FOR TAPERS (B) IN THE ABOVE TABLE.

PROGRESS PRINT
08-12-2021

REVISION	BY	C'K'D	DATE

NEW JERSEY DEPARTMENT OF TRANSPORTATION

TRAFFIC CONTROL AND STAGING PLANS

VILLAGE OF RIDGEWOOD
SAFE ROUTES TO SCHOOL DESIGN ASSISTANCE
RIDGEWOOD SRTS 2016 - PHASE 1 - RIDGEWOOD PUBLIC SCHOOLS
PRELIMINARY ENGINEERING PHASE

NVS, INC.
CERTIFICATION OF AUTHORIZATION NO. 24GA27930509

TC-1
TC-1